

Datasheet for ABIN5713672

**MT1F Protein (AA 1-59, partial) (His tag)**[Go to Product page](#)**1** Image

## Overview

Quantity:	100 µg
Target:	MT1F
Protein Characteristics:	AA 1-59, partial
Origin:	Human
Source:	Yeast
Protein Type:	Recombinant
Purification tag / Conjugate:	This MT1F protein is labelled with His tag.
Application:	SDS-PAGE (SDS)

## Product Details

Sequence:	MDPNCSCAAG VSCTCAGSCK CKECKCTSCK KSCCSCCPVG CSKCAQGCVC KGASEKCSC
Purification:	SDS-PAGE
Purity:	> 90 %

## Target Details

Target:	MT1F
Alternative Name:	MT1F ( <a href="#">MT1F Products</a> )
Background:	Metallothioneins have a high content of cysteine residues that bind various heavy metals, these proteins are transcriptionally regulated by both heavy metals and glucocorticoids.
Molecular Weight:	7.9 kDa

## Target Details

UniProt: [P04733](#)

## Application Details

Application Notes: Optimal working dilution should be determined by the investigator.

Restrictions: For Research Use only

## Handling

Format: Liquid

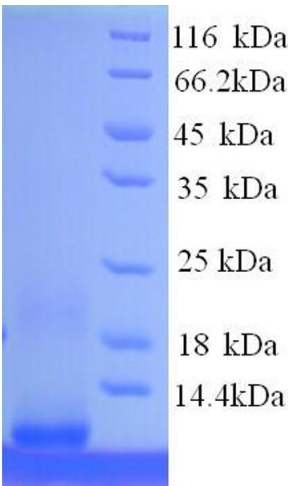
Concentration: 0.1-2 mg/mL

Buffer: 20 mM Tris-HCl based buffer, pH 8.0

Storage: -80 °C, 4 °C, -20 °C

Storage Comment: Store at -20°C, for extended storage, conserve at -20°C or -80°C. Repeated freezing and thawing is not recommended. Store working aliquots at 4°C for up to one week.

## Images



### SDS-PAGE

Image 1.