

Datasheet for ABIN5713746

## PNMA2 Protein (AA 2-263, partial) (His tag)



[Go to Product page](#)

### 1 Image

#### Overview

Quantity:	100 µg
Target:	PNMA2
Protein Characteristics:	AA 2-263, partial
Origin:	Human
Source:	Yeast
Protein Type:	Recombinant
Purification tag / Conjugate:	This PNMA2 protein is labelled with His tag.
Application:	SDS-PAGE (SDS)

#### Product Details

Sequence:	ALALLEDWCR IMSVDEQKSL MVTGIPADFE EAEIQEVLQE TLKSLGRYRL LGKIFRKQEN ANAVLLELLE DTDVSAIPSE VQGKGGVWKV IFKTPNQDTE FLERLNLFLE KEGQTVSGMF RALGQEGVSP ATVPCISPEL LAHLLGQAMA HAPQPLPMR YRKLRFVSGS AVPAPEEESF EVWLEQATEI VKEWPVTEAE KKRWLAESLR GPALDLMHIV QADNPSISVE ECLEAFKQVF GSLESRRTAQ VRYLKTYQEE GEKVSAYVLR LETLLRRAVE KRAIPRIAD QVRLEQVMAG ATLNQMLWCR LRELKDQGPP PSFLELMKVI REEEEEESAF ENESIEEPEE RDGYGRWNHE
Purification:	SDS-PAGE
Purity:	> 90 %

#### Target Details

Target:	PNMA2
---------	-------

## Target Details

Alternative Name: PNMA2 ([PNMA2 Products](#))

Molecular Weight: 43.1 kDa

UniProt: [Q9UL42](#)

## Application Details

Application Notes: Optimal working dilution should be determined by the investigator.

Restrictions: For Research Use only

## Handling

Format: Liquid

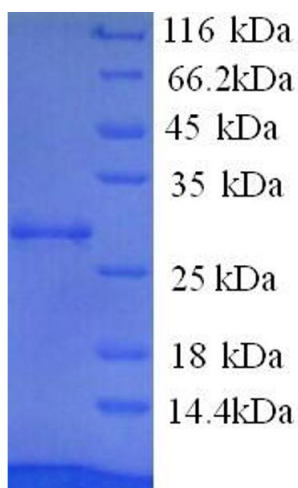
Concentration: 0.1-2 mg/mL

Buffer: 20 mM Tris-HCl based buffer, pH 8.0

Storage: -80 °C, 4 °C, -20 °C

Storage Comment: Store at -20°C, for extended storage, conserve at -20°C or -80°C. Repeated freezing and thawing is not recommended. Store working aliquots at 4°C for up to one week.

## Images



### SDS-PAGE

Image 1.