



[Go to Product page](#)

Datasheet for ABIN5713918

TBB2A Protein (AA 1-445, full length) (His tag)

1 Image

Overview

| | |
|-------------------------------|--|
| Quantity: | 100 µg |
| Target: | TBB2A |
| Protein Characteristics: | full length, AA 1-445 |
| Origin: | Human |
| Source: | Yeast |
| Protein Type: | Recombinant |
| Purification tag / Conjugate: | This TBB2A protein is labelled with His tag. |
| Application: | SDS-PAGE (SDS) |

Product Details

| | |
|---------------|--|
| Sequence: | MREIVHIQAG QCGNQIGAKF WEVISDEHGI DPTGSYHGDS DLQLERINVY YNEAAGNKYV PRAILDVLEP GTMDSVRS GP FGQIFRPDNF VFGQSGAGNN WAKGHYTEGA ELVDSVLDVV RKESESCDCL QGFQLTHSLG GGTGSGMGTL LISKIREEYP DRIMNTFSVM PSPKVSDTVV EPYNATLSVH QLVENTDETY SIDNEALYDI CFRTLKLTTP TYGDLNHLVS ATMSGVTTCL RFPGQLNADL RKLAVNMVPF PRLHFFMPGF APLTSRGSQQ YRALTVPELT QQMFDSKNMM AACDPRHGRY LTVA AIFRGR MSMKEVDEQM LNVQKNSSY FVEWIPNNVK TAVCDIPPRG LKMSATFIGN STAIQELFKR ISEQFTAMFR RKAFLHWYTG EGMDEMEFTE AESNMNDLVS EYQYQDATA DEQGEFEEEE GEDEA |
| Purification: | SDS-PAGE |
| Purity: | > 90 % |

Target Details

| | |
|-------------------|--|
| Target: | TBB2A |
| Alternative Name: | TBB2A (TBB2A Products) |
| Background: | Tubulin is the major constituent of microtubules. It binds two moles of GTP, one at an exchangeable site on the beta chain and one at a non-exchangeable site on the alpha chain . |
| Molecular Weight: | 51.9 kDa |
| UniProt: | Q13885 |

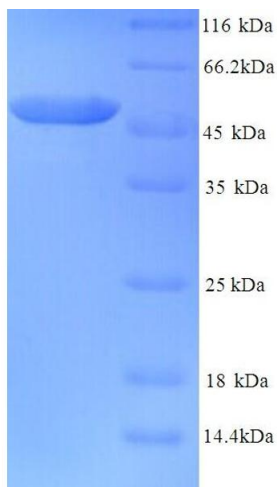
Application Details

| | |
|--------------------|--|
| Application Notes: | Optimal working dilution should be determined by the investigator. |
| Restrictions: | For Research Use only |

Handling

| | |
|------------------|---|
| Format: | Liquid |
| Concentration: | 0.1-2 mg/mL |
| Buffer: | 20 mM Tris-HCl based buffer, pH 8.0 |
| Storage: | -80 °C,4 °C,-20 °C |
| Storage Comment: | Store at -20°C, for extended storage, conserve at -20°C or -80°C. Repeated freezing and thawing is not recommended. Store working aliquots at 4°C for up to one week. |

Images



SDS-PAGE

Image 1.