



[Go to Product page](#)

Datasheet for ABIN5713994

## ALL2 Protein (AA 1-159, full length) (His tag)

### 1 Image

#### Overview

Quantity:	100 µg
Target:	ALL2
Protein Characteristics:	full length, AA 1-159
Origin:	Celery
Source:	Yeast
Protein Type:	Recombinant
Purification tag / Conjugate:	This ALL2 protein is labelled with His tag.
Application:	SDS-PAGE (SDS)

#### Product Details

Sequence:	MGVQKTVVEA PSTVSAEKMY QGFLDMDTV FPKVLPQLIK SVEILEGDDG VGTVKLVHLG EATEYTTMKQ KVDVIDKAGL AYTYYTTIGGD ILVDVLESVV NEFVVVPTDG GCIVKNTTIY NTKGDVAVLPE DKIKEATEKS ALAFKAVEAY LLANLQFLA
Purification:	SDS-PAGE
Purity:	> 90 %

#### Target Details

Target:	ALL2
Alternative Name:	ALL2 ( <a href="#">ALL2 Products</a> )
Molecular Weight:	19.09 kDa

## Target Details

---

UniProt: [P92918](#)

## Application Details

---

Application Notes: Optimal working dilution should be determined by the investigator.

Restrictions: For Research Use only

## Handling

---

Format: Liquid

Concentration: 0.1-2 mg/mL

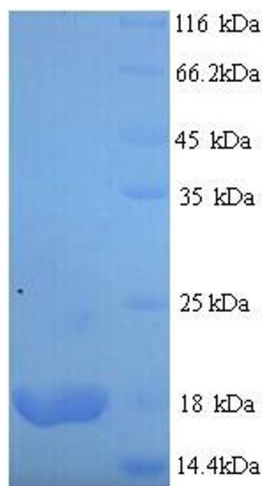
Buffer: 20 mM Tris-HCl based buffer, pH 8.0

Storage: -80 °C, 4 °C, -20 °C

Storage Comment: Store at -20°C, for extended storage, conserve at -20°C or -80°C. Repeated freezing and thawing is not recommended. Store working aliquots at 4°C for up to one week.

## Images

---



### SDS-PAGE

Image 1.