



[Go to Product page](#)

Datasheet for ABIN5714056

## Tau1 Protein (LOC101055581) (AA 24-195) (His tag)

### 1 Image

#### Overview

Quantity:	100 µg
Target:	Tau1 (LOC101055581)
Protein Characteristics:	AA 24-195
Origin:	Cow
Source:	Yeast
Protein Type:	Recombinant
Purification tag / Conjugate:	This Tau1 protein is labelled with His tag.
Application:	SDS-PAGE (SDS)

#### Product Details

Sequence:	CYLSSEHMLG ARENLRLLAR MNRLSPHPCL QDRKDFGLPQ EMVEGNQLQK DQAISVLHEM LQQCFNLFYT EHSSAAWNTT LLEQLCTGLQ QQLEDLDAQL GPVMGEKDSM MGRMGPIILTV KKYFQGIHVY LKEKEYSDCA WEIIRVEMMR ALSSSTTLQK RLRKMGDDLN SL
Purification:	SDS-PAGE
Purity:	> 90 %

#### Target Details

Target:	Tau1 (LOC101055581)
Alternative Name:	tau-1 ( <a href="#">LOC101055581 Products</a> )
Molecular Weight:	21.7 kDa

## Application Details

Application Notes: Optimal working dilution should be determined by the investigator.

Restrictions: For Research Use only

## Handling

Format: Liquid

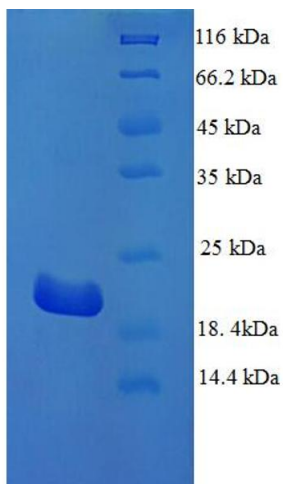
Concentration: 0.1-2 mg/mL

Buffer: 20 mM Tris-HCl based buffer, pH 8.0

Storage: -80 °C, 4 °C, -20 °C

Storage Comment: Store at -20°C, for extended storage, conserve at -20°C or -80°C. Repeated freezing and thawing is not recommended. Store working aliquots at 4°C for up to one week.

## Images



### SDS-PAGE

Image 1.