



Datasheet for ABIN5714078

cfaE Protein (AA 1-360, full length) (His tag)



[Go to Product page](#)

1 Image

Overview

Quantity:	100 µg
Target:	cfaE (CFAE)
Protein Characteristics:	full length, AA 1-360
Origin:	E. coli
Source:	Yeast
Protein Type:	Recombinant
Purification tag / Conjugate:	This cfaE protein is labelled with His tag.
Application:	SDS-PAGE (SDS)

Product Details

Sequence: MNKILFIFTL FFSSGFFTF A VSADKNPGSE NMTNTIGPHD RGGSSPIYNI LNSYLTA YNG
SHHLYDRMSF LCLSSQNTLN GACPSSDAPG TATIDGETNI TLQFTEKRSL IKRELQIKGY
KQFLFKNANC PSKLALNSSH FQC NREQASG ATLSLYIPAG ELNKL PFGGV WNAVLKLNVK
RRYDTTYGTY TINITVNLTD KGNIQIWL PQ FKS NARVDLN LRPTGGGT YI GRNSVDMCFY
DGYSTNSSSL EIRFQDDNSK SDGKFY LKKI NDDSKELVYT LLLLLAGKNL TPTNGQALNI
NTASLETNWN RITAVTMPEI SVPVLCWPGR QLDAKVKNP EAGQYMGNIK ITFTPSSQTL

Purification: SDS-PAGE

Purity: > 90 %

Target Details

Target: cfaE (CFAE)

Target Details

Alternative Name: CFAE ([CFAE Products](#))

Molecular Weight: 41.9 kDa

UniProt: [P25734](#)

Application Details

Application Notes: Optimal working dilution should be determined by the investigator.

Restrictions: For Research Use only

Handling

Format: Liquid

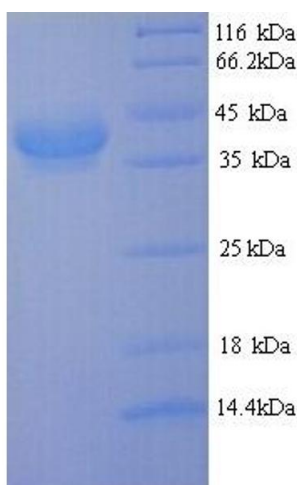
Concentration: 0.1-2 mg/mL

Buffer: 20 mM Tris-HCl based buffer, pH 8.0

Storage: -80 °C, 4 °C, -20 °C

Storage Comment: Store at -20°C, for extended storage, conserve at -20°C or -80°C. Repeated freezing and thawing is not recommended. Store working aliquots at 4°C for up to one week.

Images



SDS-PAGE

Image 1.