

Datasheet for ABIN5714332
FGL2 Protein (AA 24-439) (His tag)



[Go to Product page](#)

1 Image

Overview

Quantity:	100 µg
Target:	FGL2
Protein Characteristics:	AA 24-439
Origin:	Human
Source:	Yeast
Protein Type:	Recombinant
Purification tag / Conjugate:	This FGL2 protein is labelled with His tag.
Application:	SDS-PAGE (SDS)

Product Details

Sequence:	NNETEEIKDE RAKDVCPVRL ESRGKCEEAG ECPYQVSLPP LTIQLPKQFS RIEEVFKEVQ NLKEIVNSLK KSCQDCKLQA DDNGDPGRNG LLLPSTGAPG EVGDNRVREL ESEVNKLSSE LKNAKEEINV LHGRLEKLNL VNMNNIENYV DSKVANLTFV VNSLDGKCSK CPSQEQIQR PVQHLYKDC SDYYAIGKRS SETYRVTPDP KNSSFEVYCD METMGGGWTV LQARLDGSTN FTRTWQDYKA GFGNLRREFW LGNDKIHLTT KSKEMILRID LEDFNGVELY ALYDQFYVAN EFLKYRLHVG NYNGTAGDAL RFNKHYNHDL KFFTTDPKDN DRYPSGNCGL YYSSGWFFDA CLSANLNGKY YHQKYRGVRN GIFWGTWPGV SEAHPPGGYKS SFKEAKMMIR PKHFKP
Purification:	SDS-PAGE
Purity:	> 90 %

Target Details

Target:	FGL2
Alternative Name:	FGL2 (FGL2 Products)
Molecular Weight:	49.64 kDa
UniProt:	Q14314

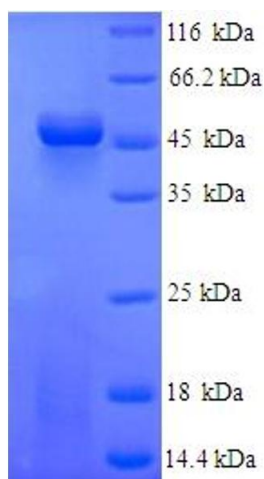
Application Details

Application Notes:	Optimal working dilution should be determined by the investigator.
Restrictions:	For Research Use only

Handling

Format:	Liquid
Concentration:	0.1-2 mg/mL
Buffer:	20 mM Tris-HCl based buffer, pH 8.0
Storage:	-80 °C, 4 °C, -20 °C
Storage Comment:	Store at -20°C, for extended storage, conserve at -20°C or -80°C. Repeated freezing and thawing is not recommended. Store working aliquots at 4°C for up to one week.

Images



SDS-PAGE

Image 1.