



[Go to Product page](#)

Datasheet for ABIN5714352

SART3 Protein (AA 600-900, partial) (His tag)

1 Image

Overview

Quantity:	100 µg
Target:	SART3
Protein Characteristics:	AA 600-900, partial
Origin:	Human
Source:	Yeast
Protein Type:	Recombinant
Purification tag / Conjugate:	This SART3 protein is labelled with His tag.
Application:	SDS-PAGE (SDS)

Product Details

Sequence:	QRKRARAEEKK ALKKKKKIRG PEKRGADDED EKEWGDDEEE QPSKRRRVEN SIPAAGETQN VEVAAGPAGK CAAVDVEPPS KQKEKAASLK RDMPKVLHDS SKDSITVFVS NLPYSMQEPD TKLRPLFEAC GEVVQIRPIF SNRGDFRGYC YVEFKEEKSA LQALEMDRKS VEGRPMFVSP CVDKSKNPDF KVFYRSTSLK KHKLFISGLP FSCTKEELEEE ICKAHGTVKD LRLVTNRAGK PKGLAYVEYE NESQASQAVM KMDGMTIKEN IIKVAISNPP QRKVPEKPET RKAPGGPMLL P
Purification:	SDS-PAGE
Purity:	> 90 %

Target Details

Target:	SART3
Alternative Name:	SART3 (SART3 Products)

Target Details

Molecular Weight:	35.84 kDa
UniProt:	Q15020
Pathways:	Ribonucleoprotein Complex Subunit Organization

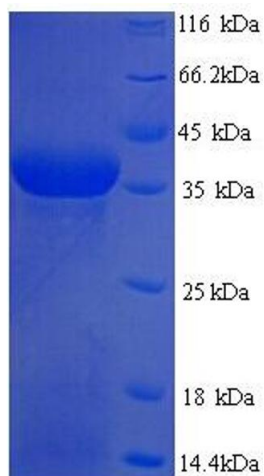
Application Details

Application Notes:	Optimal working dilution should be determined by the investigator.
Restrictions:	For Research Use only

Handling

Format:	Liquid
Concentration:	0.1-2 mg/mL
Buffer:	20 mM Tris-HCl based buffer, pH 8.0
Storage:	-80 °C, 4 °C, -20 °C
Storage Comment:	Store at -20°C, for extended storage, conserve at -20°C or -80°C. Repeated freezing and thawing is not recommended. Store working aliquots at 4°C for up to one week.

Images



SDS-PAGE

Image 1.