



[Go to Product page](#)

Datasheet for ABIN5714438

PGLYRP2 Protein (AA 22-576) (His tag)

1 Image

Overview

Quantity:	100 µg
Target:	PGLYRP2
Protein Characteristics:	AA 22-576
Origin:	Human
Source:	Yeast
Protein Type:	Recombinant
Purification tag / Conjugate:	This PGLYRP2 protein is labelled with His tag.
Application:	SDS-PAGE (SDS)

Product Details

Sequence:	<p>SLPLLMDSVI QALAELEQKV PAAKTRHTAS AWLMSAPNSG PHNRLYHFLL GAWSLNATEL DPCPLSPELL GLTKEVARHD VREGKEYGVV LAPDGSTVAV EPLLAGLEAG LQGRRVINLP LDSMAAPWET GDTFPDVVAI APDVRATSSP GLRDGSPDVT TADIGANTPD ATKGCPDVQA SLPDAKAKSP PTMVDSLLAV TLAGNLGLTF LRGSQTQSHPLDLGTEGCWDQ LSAPRTFTLL DPKASLLTMA FLNGALDGI LGDYLSRTPPE PRPSLSHLLS QYYGAGVARD PGFRSNFRRQ NGAALTSASI LAQQVWGTLV LLQRLEPVHL QLQCMSQEQL AQVAANATKE FTEAFLGCPA IHPRCRWGAA PYRGRPKLLQ LPLGFLYVHH TYVPAPPCTD FTRCAANMRS MORYHQDTQG WGDIGYSFVV GSDGYVYEGR GWHHWGAHTL GHNSRFGVA IVGNYYAALP TEAALRTVRD TLPSCAVRAG LLRPDYALLG HRQLVRTDCP GDALFDLLRT WPHFTATVKP RPARSVSKRS RREPPPTLP ATDLQ</p>
Purification:	SDS-PAGE
Purity:	> 90 %

Target Details

Target:	PGLYRP2
Alternative Name:	PGRP2 (PGLYRP2 Products)
Background:	May play a scavenger role by digesting biologically active peptidoglycan (PGN) into biologically inactive fragments. Has no direct bacteriolytic activity.
Molecular Weight:	61.9 kDa
UniProt:	Q96PD5
Pathways:	Activation of Innate immune Response , Glycosaminoglycan Metabolic Process

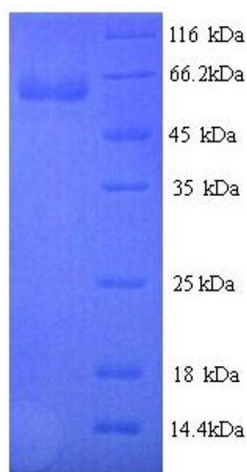
Application Details

Application Notes:	Optimal working dilution should be determined by the investigator.
Restrictions:	For Research Use only

Handling

Format:	Liquid
Concentration:	0.1-2 mg/mL
Buffer:	20 mM Tris-HCl based buffer, pH 8.0
Storage:	-80 °C, 4 °C, -20 °C
Storage Comment:	Store at -20°C, for extended storage, conserve at -20°C or -80°C. Repeated freezing and thawing is not recommended. Store working aliquots at 4°C for up to one week.

Images



SDS-PAGE

Image 1.