



[Go to Product page](#)

Datasheet for ABIN5714464

## LMAN1L Protein (AA 26-462) (His tag)

### 1 Image

#### Overview

Quantity:	100 µg
Target:	LMAN1L
Protein Characteristics:	AA 26-462
Origin:	Human
Source:	Yeast
Protein Type:	Recombinant
Purification tag / Conjugate:	This LMAN1L protein is labelled with His tag.
Application:	SDS-PAGE (SDS)

#### Product Details

Sequence:	GCPPLRRFEY KLSFKGPRLA LPGAGIPFWS HHGDAILGLE EVRLTPSMRN RSGAVWSRAS VPFSAWEVEV QMRVTGLGRR GAQGMVWYR RGRGHVGSVL GGLASWDGIG IFFDSPAEDT QDSPAIRVLA SDGHIPSEQP GDGASQGLGS CHWDFRNRPH PFRARITYWG QLRMSLNSG LTPSDPGEFC VDVGPLLLVP GGFFGVSAAT GTLADDHDVL SFLTFSLSEP SPEVPPQPFL EMQQLRLARQ LEGLWARLGL GTREDVTPKS DSEAQGEGER LFDLEETLGR HRRILQALRG LSKQLAQAER QWKKQLGPPG QARPDGGWAL DASCQIPSTP GRGGHLSMSL NKDSAKVGAL LHGQWTL LQA LQEMRDAVR MAEAEQVSYL PVGIEHHFLE LDHILGLLQE ELRGPAAAA KAPRPPGQPP RASSCLQ
Purification:	SDS-PAGE
Purity:	> 90 %

## Target Details

Target:	LMAN1L
Alternative Name:	LMA1L ( <a href="#">LMAN1L Products</a> )
Molecular Weight:	49.5 kDa
UniProt:	<a href="#">Q9HAT1</a>

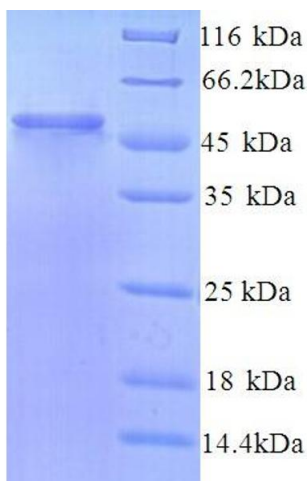
## Application Details

Application Notes:	Optimal working dilution should be determined by the investigator.
Restrictions:	For Research Use only

## Handling

Format:	Liquid
Concentration:	0.1-2 mg/mL
Buffer:	20 mM Tris-HCl based buffer, pH 8.0
Storage:	-80 °C, 4 °C, -20 °C
Storage Comment:	Store at -20°C, for extended storage, conserve at -20°C or -80°C. Repeated freezing and thawing is not recommended. Store working aliquots at 4°C for up to one week.

## Images



### SDS-PAGE

Image 1.