

Datasheet for ABIN571659
anti-TRPC4 antibody

17 Images



[Go to Product page](#)

Overview

| | |
|--------------|--------------------------------------|
| Quantity: | 100 µL |
| Target: | TRPC4 |
| Reactivity: | Human, Mouse, Rat |
| Host: | Rabbit |
| Clonality: | Polyclonal |
| Conjugate: | This TRPC4 antibody is un-conjugated |
| Application: | Immunohistochemistry (IHC) |

Product Details

| | |
|--------------|---|
| Immunogen: | A synthetic peptide from human TRPC4 conjugated to an immunogenic carrier protein was used as the antigen. The peptide is homologous in many other species. |
| Isotype: | IgG |
| Specificity: | Specific for TRPC4. See also the immunogen. |

Target Details

| | |
|-------------------|--|
| Target: | TRPC4 |
| Alternative Name: | TRPC4 (TRPC4 Products) |
| Background: | <p>Function: Thought to form non-selective a receptor-activated calcium permeant cation channel. Probably is operated by a phosphatidylinositol second messenger system activated by receptor tyrosine kinases or G-protein coupled receptors. Has also been shown to be calcium-selective.</p> <p>May also be activated by intracellular calcium store depletion.</p> |

Target Details

Subunit: Isoform alpha but not isoform beta associates with inositol-1,4,5-triphosphate receptor (ITPR). Interacts with NHERF.

Subcellular location: Membrane, Multi-pass membrane protein. -

Tissue specificity: Abundantly expressed in brain (hippocampal CA1 pyramidal neurons, dentate gyrus granule cells, and cerebral cortical neurons, and in the septal nuclei and the mitral layer of olfactory bulb). Lower levels are detected in other tissues. -

Tissue specificity: Strongly expressed in placenta. Expressed at lower levels in heart, pancreas, kidney and brain. Isoform alpha was found to be the predominant isoform. Isoform beta was not found in pancreas and brain. Also known as: Short transient receptor potential channel 4, TrpC4, Trp4, Capacitative calcium entry channel 1, CCE1, Trp4, Receptor-activated cation channel TRP4, Trp-related protein 4, hTrp-4, hTrp4.

Application Details

Application Notes: A concentration of 10-50 µg/ml is recommended.
The optimal concentration should be determined by the end user.
Not yet tested in other applications.

Restrictions: For Research Use only

Handling

Format: Lyophilized

Reconstitution: Reconstitute in 150 µL of sterile water. Centrifuge to remove any insoluble material.

Handling Advice: Avoid freeze and thaw cycles.

Storage: 4 °C/-20 °C

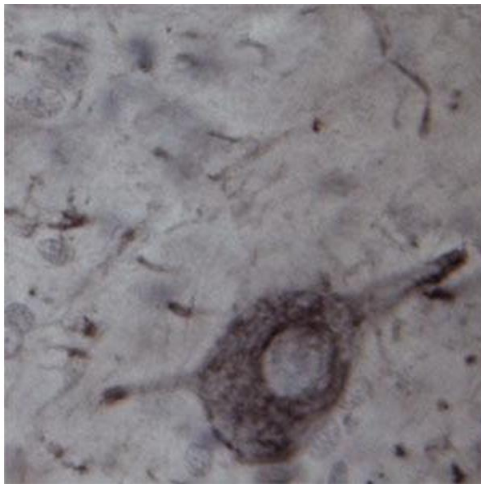
Storage Comment: Maintain the lyophilised/reconstituted antibodies frozen at -20°C for long term storage and refrigerated at 2-8°C for a shorter term. When reconstituting, glycerol (1:1) may be added for an additional stability. Avoid freeze and thaw cycles.

Expiry Date: 12 months



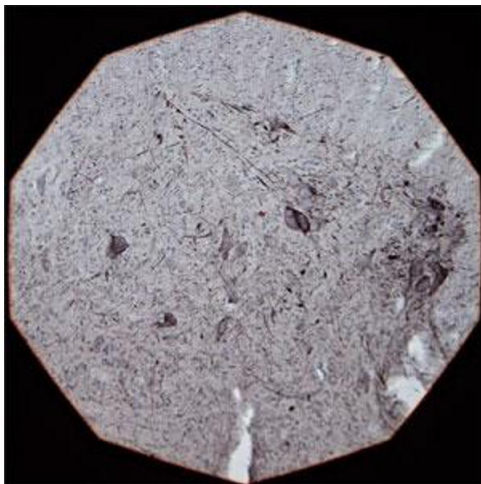
Immunohistochemistry

Image 1. IHC on rat spinal cord (free floating sections) using Rabbit antibody to 1t cytoplasmic loop of TRPC4 (TRP4): IgG at a concentration of 20 µg/ml incubated overnight at room temperature with shake, developed with DAB/Ni.



Immunohistochemistry

Image 2. IHC on rat spinal cord (free floating sections) using Rabbit antibody to TRPC4 at a concentration of 20 µg/ml incubated overnight at room temperature with shake, developed with DAB/Ni.



Immunohistochemistry

Image 3. IHC on rat spinal cord (free floating sections) using Rabbit antibody to 1t cytoplasmic loop of TRPC4 (TRP4): IgG at a concentration of 20 µg/ml incubated overnight at room temperature with shake, developed with DAB/Ni.

Please check the [product details page](#) for more images. Overall 17 images are available for ABIN571659.