

Datasheet for ABIN573996  
**anti-SHROOM2 antibody (AA 1554-1616)**

## 3 Images

[Go to Product page](#)

## Overview

Quantity:	50 µL
Target:	SHROOM2
Binding Specificity:	AA 1554-1616
Reactivity:	Human
Host:	Rabbit
Clonality:	Polyclonal
Conjugate:	This SHROOM2 antibody is un-conjugated
Application:	Western Blotting (WB), Immunohistochemistry (IHC), Immunohistochemistry (Paraffin-embedded Sections) (IHC (p))

## Product Details

Brand:	IHC-plus™
Immunogen:	Synthetic peptide containing a sequence corresponding to a region within amino acids 1554 and 1616 of Human APXL.  Type of Immunogen: Synthetic peptide
Specificity:	Human APXL.
Purification:	Immunoaffinity purified

## Target Details

Target:	SHROOM2
---------	---------

## Target Details

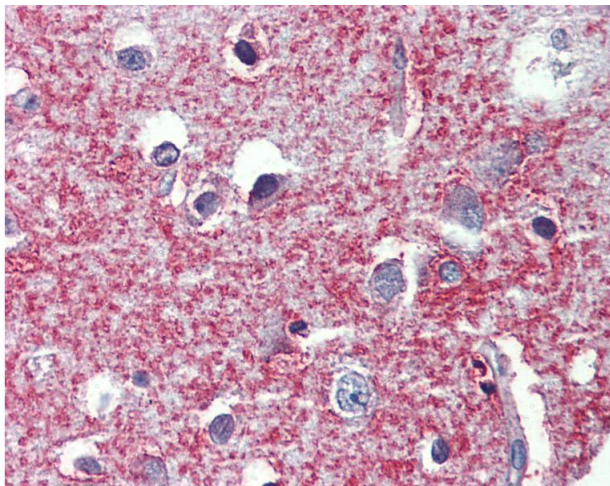
Alternative Name:	SHROOM2 ( <a href="#">SHROOM2 Products</a> )
Background:	Name/Gene ID: SHROOM2  Synonyms: SHROOM2, Apical-like protein, HSAPXL, Protein APXL, Protein Shroom2, APX homolog of Xenopus, APXL, Shroom family member 2
Gene ID:	357
UniProt:	<a href="#">Q13796</a>
Pathways:	<a href="#">Cell-Cell Junction Organization</a> , <a href="#">Asymmetric Protein Localization</a>

## Application Details

Application Notes:	Approved: IHC, IHC-P (10 µg/mL), WB (1:500 - 1:3000)
Comment:	Target Species of Antibody: Human
Restrictions:	For Research Use only

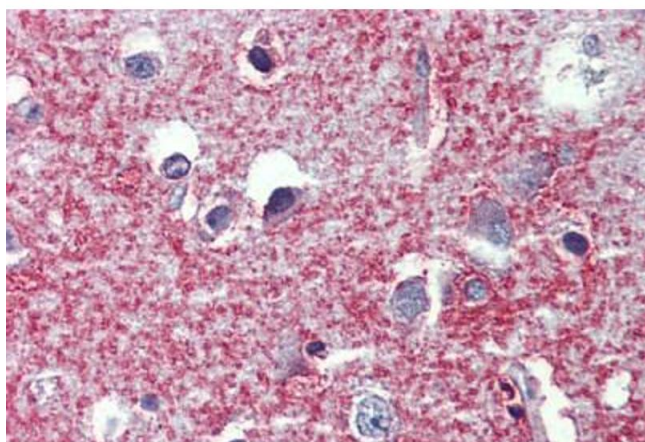
## Handling

Format:	Liquid
Concentration:	Lot specific
Buffer:	PBS, pH 7, 1 % BSA, 20 % Glycerol, 0.01 % Thimerosal
Preservative:	Thimerosal (Merthiolate)
Precaution of Use:	This product contains Thimerosal (Merthiolate): a POISONOUS AND HAZARDOUS SUBSTANCE which should be handled by trained staff only.
Handling Advice:	Minimize freezing and thawing.
Storage:	-20 °C
Storage Comment:	Aliquot and store at -20°C. Avoid freeze-thaw cycles.



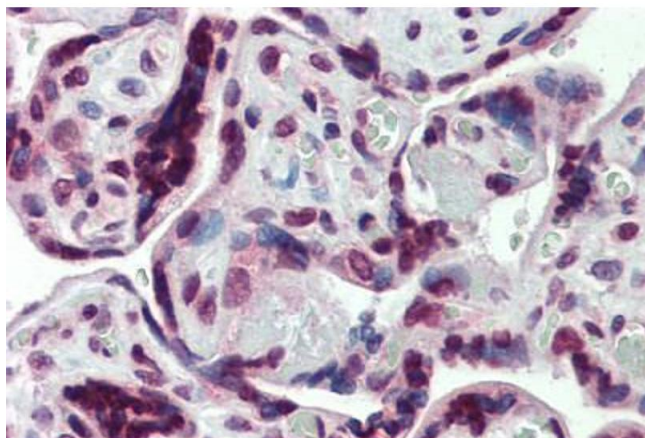
#### Immunohistochemistry

**Image 1.** Anti-SHRROOM2 antibody IHC of human brain, cortex. Immunohistochemistry of formalin-fixed, paraffin-embedded tissue after heat-induced antigen retrieval. Antibody concentration 10 ug/ml.



#### Immunohistochemistry (Formalin-fixed Paraffin-embedded Sections)

**Image 2.** Human Brain, cortex: Formalin-Fixed, Paraffin-Embedded (FFPE)



#### Immunohistochemistry (Formalin-fixed Paraffin-embedded Sections)

**Image 3.** Human Placenta: Formalin-Fixed, Paraffin-Embedded (FFPE)