

Datasheet for ABIN574002
anti-ERCC8 antibody (AA 106-300)[Go to Product page](#)

2 Images

Overview

| | |
|----------------------|---|
| Quantity: | 50 µL |
| Target: | ERCC8 |
| Binding Specificity: | AA 106-300 |
| Reactivity: | Human, Mouse, Rat, Cow |
| Host: | Rabbit |
| Clonality: | Polyclonal |
| Conjugate: | This ERCC8 antibody is un-conjugated |
| Application: | Western Blotting (WB), Immunohistochemistry (IHC), Immunofluorescence (IF), Immunohistochemistry (Paraffin-embedded Sections) (IHC (p)), Immunocytochemistry (ICC) |

Product Details

| | |
|---------------|---|
| Brand: | IHC-plus™ |
| Immunogen: | Recombinant protein fragment containing a sequence corresponding to a region within amino acids 106 and 300 of CSA. Type of Immunogen: Recombinant protein |
| Specificity: | Human ERCC8. |
| Purification: | Immunoaffinity purified |

Target Details

| | |
|---------|-------|
| Target: | ERCC8 |
|---------|-------|

Target Details

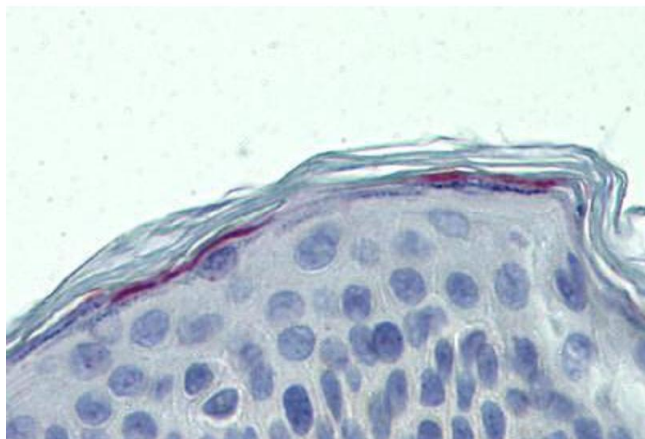
| | |
|-------------------|--|
| Alternative Name: | CSA / ERCC8 (ERCC8 Products) |
| Background: | Name/Gene ID: ERCC8 Synonyms: ERCC8, CKN1, UVSS2, CSA |
| Gene ID: | 1161 |
| UniProt: | Q13216 |
| Pathways: | DNA Damage Repair , Positive Regulation of Response to DNA Damage Stimulus |

Application Details

| | |
|--------------------|--|
| Application Notes: | Approved: ICC, IF (1:100 - 1:200), IHC, IHC-P (10 µg/mL), WB (1:500 - 1:3000) Usage: Cross reactivity with mouse has been confirmed in WB only. The suitability of the antibody for use in IHC with mouse samples has not been evaluated at this time. Cross-reactivity with rat and cow has not been experimentally confirmed. The antibody is predicted to cross-react with rat and cow based on sequence homologies of 96 % and 95 % respectively. |
| Comment: | Target Species of Antibody: Human |
| Restrictions: | For Research Use only |

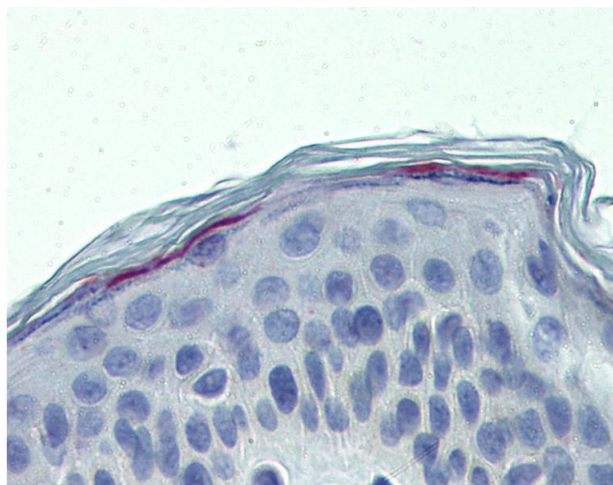
Handling

| | |
|--------------------|--|
| Format: | Liquid |
| Concentration: | Lot specific |
| Buffer: | PBS, pH 7, 1 % BSA, 20 % Glycerol, 0.01 % Thimerosal |
| Preservative: | Thimerosal (Merthiolate) |
| Precaution of Use: | This product contains Thimerosal (Merthiolate): a POISONOUS AND HAZARDOUS SUBSTANCE which should be handled by trained staff only. |
| Handling Advice: | Minimize freezing and thawing. |
| Storage: | -20 °C |
| Storage Comment: | Aliquot and store at -20°C. Avoid freeze-thaw cycles. |



Immunohistochemistry (Formalin-fixed Paraffin-embedded Sections)

Image 1. Human Skin: Formalin-Fixed, Paraffin-Embedded (FFPE)



Immunohistochemistry

Image 2. Anti-ERCC8 antibody IHC of human skin. Immunohistochemistry of formalin-fixed, paraffin-embedded tissue after heat-induced antigen retrieval. Antibody concentration 10 ug/ml.