

Datasheet for ABIN574007
anti-GALR2 antibody (AA 212-277)



[Go to Product page](#)

3 Images

Overview

Quantity:	50 µL
Target:	GALR2
Binding Specificity:	AA 212-277
Reactivity:	Human
Host:	Rabbit
Clonality:	Polyclonal
Conjugate:	This GALR2 antibody is un-conjugated
Application:	Western Blotting (WB), Immunohistochemistry (IHC), Immunohistochemistry (Paraffin-embedded Sections) (IHC (p))

Product Details

Brand:	IHC-plus™
Immunogen:	Synthetic peptide containing a sequence corresponding to a region within amino acids 212 and 277 of galanin receptor 2. Type of Immunogen: Synthetic peptide
Specificity:	Human Galanin receptor 2.
Purification:	Immunoaffinity purified

Target Details

Target:	GALR2
---------	-------

Target Details

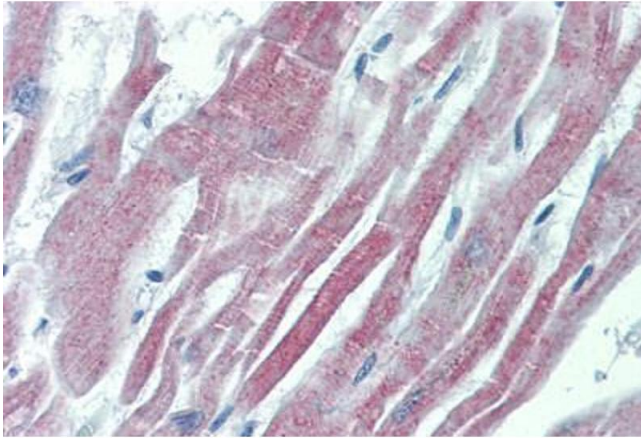
Alternative Name:	GALR2 / Galanin Receptor 2 (GALR2 Products)
Background:	Name/Gene ID: GALR2 Subfamily: Galanin Family: GPCR Synonyms: GALR2, Galanin-2 receptor, Gal-2 receptor, Galanin receptor type 2, GALNR2, GALR-2, Gal receptor 2, GAL subtype 2 receptor, Gal-r2, Galanin r2 receptor, GAL2-R, Galanin receptor 2, Galanin receptor subtype 2
Gene ID:	8811
UniProt:	O43603
Pathways:	cAMP Metabolic Process , Inositol Metabolic Process , Feeding Behaviour

Application Details

Application Notes:	Approved: IHC, IHC-P (10 µg/mL), WB (1:500 - 1:3000)
Comment:	Target Species of Antibody: Human
Restrictions:	For Research Use only

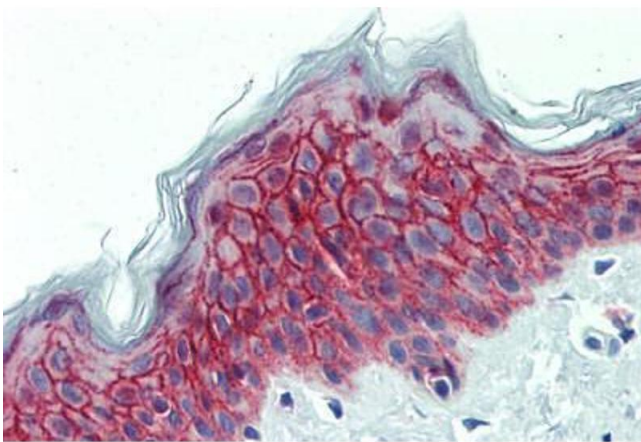
Handling

Format:	Liquid
Concentration:	Lot specific
Buffer:	0.1 M Tris-glycine, pH 7, 10 % Glycerol, 0.01 % Thimerosal
Preservative:	Thimerosal (Merthiolate)
Precaution of Use:	This product contains Thimerosal (Merthiolate): a POISONOUS AND HAZARDOUS SUBSTANCE which should be handled by trained staff only.
Handling Advice:	Minimize freezing and thawing.
Storage:	-20 °C
Storage Comment:	Aliquot and store at -20°C. Avoid freeze-thaw cycles.



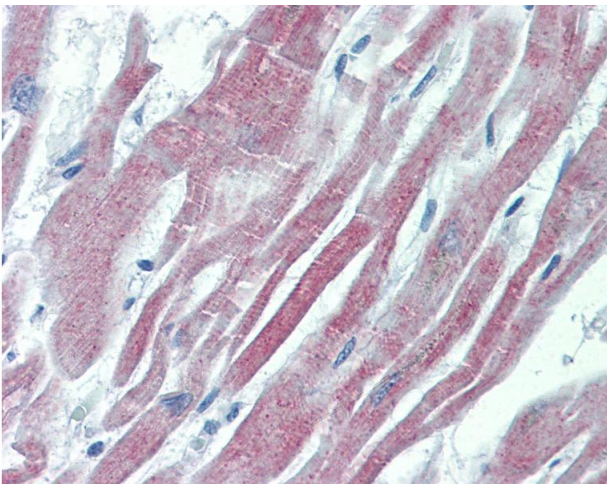
Immunohistochemistry (Formalin-fixed Paraffin-embedded Sections)

Image 1. Human Heart: Formalin-Fixed, Paraffin-Embedded (FFPE)



Immunohistochemistry (Formalin-fixed Paraffin-embedded Sections)

Image 2. Human Skin: Formalin-Fixed, Paraffin-Embedded (FFPE)



Immunohistochemistry

Image 3. Anti-GALR2 antibody IHC of human heart. Immunohistochemistry of formalin-fixed, paraffin-embedded tissue after heat-induced antigen retrieval. Antibody concentration 10 ug/ml.