

Datasheet for ABIN574010
anti-OR51E1 antibody (AA 79-141)



[Go to Product page](#)

3 Images

Overview

Quantity:	50 µL
Target:	OR51E1
Binding Specificity:	AA 79-141
Reactivity:	Human
Host:	Rabbit
Clonality:	Polyclonal
Conjugate:	This OR51E1 antibody is un-conjugated
Application:	Western Blotting (WB), Immunohistochemistry (Paraffin-embedded Sections) (IHC (p)), Immunohistochemistry (IHC)

Product Details

Brand:	IHC-plus™
Immunogen:	Synthetic peptide containing a sequence corresponding to a region within amino acids 79 and 141 of Human GPR 164. Type of Immunogen: Synthetic peptide
Specificity:	Human GPR164.
Purification:	Immunoaffinity purified

Target Details

Target:	OR51E1
---------	--------

Target Details

Alternative Name: [OR51E1 \(OR51E1 Products\)](#)

Background: Name/Gene ID: OR51E1

Subfamily: Orphan-U

Family: GPCR

Synonyms: OR51E1, D-GPCR, Olfactory receptor OR11-15, OR51E1P, OR52A3P, PSGR2, Olfactory receptor 51E1, Olfactory receptor 52A3, POGR, G-protein coupled receptor 164, GPR136, GPR164

Gene ID: 143503

UniProt: [Q8TCB6](#)

Application Details

Application Notes: Approved: IHC, IHC-P (20 µg/mL), WB (1:500 - 1:3000)

Comment: Target Species of Antibody: Human

Restrictions: For Research Use only

Handling

Format: Liquid

Concentration: Lot specific

Buffer: PBS, pH 7, 50 % Glycerol, 0.01 % Thimerosal

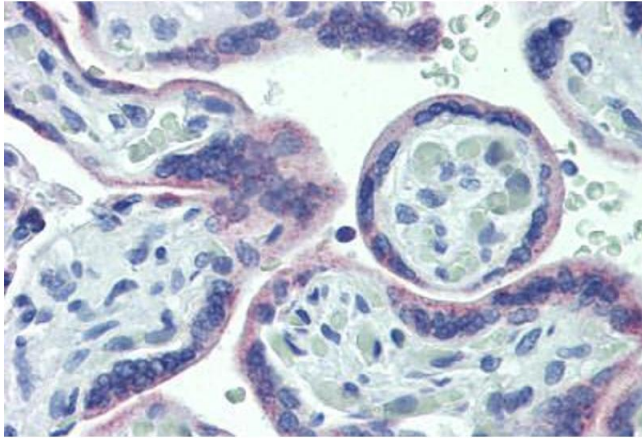
Preservative: Thimerosal (Merthiolate)

Precaution of Use: This product contains Thimerosal (Merthiolate): a POISONOUS AND HAZARDOUS SUBSTANCE which should be handled by trained staff only.

Handling Advice: Minimize freezing and thawing.

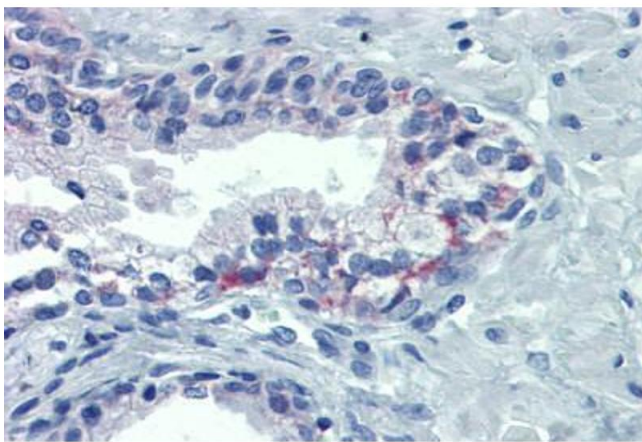
Storage: -20 °C

Storage Comment: Aliquot and store at -20°C. Avoid freeze-thaw cycles.



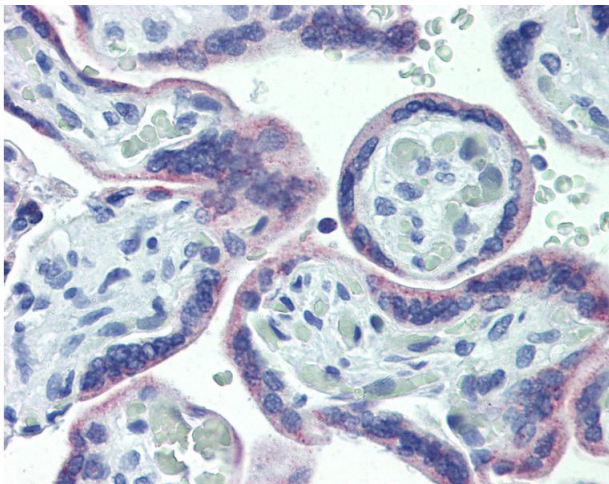
Immunohistochemistry (Formalin-fixed Paraffin-embedded Sections)

Image 1. Human Placenta: Formalin-Fixed, Paraffin-Embedded (FFPE)



Immunohistochemistry (Formalin-fixed Paraffin-embedded Sections)

Image 2. Human Prostate: Formalin-Fixed, Paraffin-Embedded (FFPE)



Immunohistochemistry

Image 3. Anti-OR51E1 antibody IHC of human placenta. Immunohistochemistry of formalin-fixed, paraffin-embedded tissue after heat-induced antigen retrieval. Antibody concentration 20 ug/ml.