

Datasheet for ABIN574068

anti-GABBR1 antibody (AA 947-961)

2 Images



[Go to Product page](#)

Overview

Quantity:	50 µg
Target:	GABBR1
Binding Specificity:	AA 947-961
Reactivity:	Human, Rat, Mouse, Cow, Monkey, Pig, Dog, Hamster, Bat, Horse, Rabbit
Host:	Goat
Clonality:	Polyclonal
Conjugate:	This GABBR1 antibody is un-conjugated
Application:	Immunohistochemistry (IHC), Immunohistochemistry (Paraffin-embedded Sections) (IHC (p))

Product Details

Brand:	IHC-plus™
Immunogen:	Synthetic peptide DRLSCDGSRVHLLYK from the C-terminus of human GABBR1 (NP_001461.1, NP_068703.1, NP_068704.2, NP_068705.2). Percent identity by BLAST analysis: Human, Gorilla, Orangutan, Gibbon, Monkey, Marmoset, Mouse, Rat, Hamster, Elephant, Panda, Bovine, Dog, Bat, Horse, Rabbit, Pig (100%), Phytophthora (80%). Type of Immunogen: Synthetic peptide
Specificity:	Human GABBR1. This antibody is expected to recognize reported isoforms a, b and c (NP_001461.1, NP_068703.1, NP_068704.2 resp.).
Predicted Reactivity:	Percent identity by BLAST analysis: Human, Gorilla, Orangutan, Gibbon, Monkey, Marmoset, Mouse, Rat, Hamster, Elephant, Panda, Bovine, Dog, Bat, Horse, Rabbit, Pig (100%)

Product Details

Phytophthora (80%).

Purification: Immunoaffinity purified

Target Details

Target: GABBR1

Alternative Name: GABABR1 / GABBR1 ([GABBR1 Products](#))

Background: Name/Gene ID: GABBR1
Subfamily: GABA(B)
Family: GPCR

Synonyms: GABBR1, DJ271M21.1.1, DJ271M21.1.2, GABA(B) receptor, Gaba-b-r1a, GABA-BR1, Gaba-br1a receptor, GABAB, subunit 1c, GABAB1, GABA-B receptor 1, Gaba-b1, Gababr1 receptor, GPRC3A, Gabab-receptor subunit 1a, GABABR1, GABBR1-3, GBR1, HGB1a, GABA-B-R1, GB1

Gene ID: 2550

NCBI Accession: [NP_001461](#), [NP_068703](#), [NP_068704](#), [NP_068705](#)

UniProt: [Q9UBS5](#)

Pathways: [Positive Regulation of Peptide Hormone Secretion](#), [cAMP Metabolic Process](#)

Application Details

Application Notes: Approved: IHC, IHC-P (3.75 - 5 µg/mL)

Usage: Immunohistochemistry: This antibody was validated for use in immunohistochemistry on a panel of 21 formalin-fixed, paraffin-embedded (FFPE) human tissues after heat induced antigen retrieval in pH 6.0 citrate buffer. After incubation with the primary antibody, slides were incubated with biotinylated secondary antibody, followed by alkaline phosphatase-streptavidin and chromogen. The stained slides were evaluated by a pathologist to confirm staining specificity. The optimal working concentration for this antibody was determined to be 3.75 to 5 µg/mL.

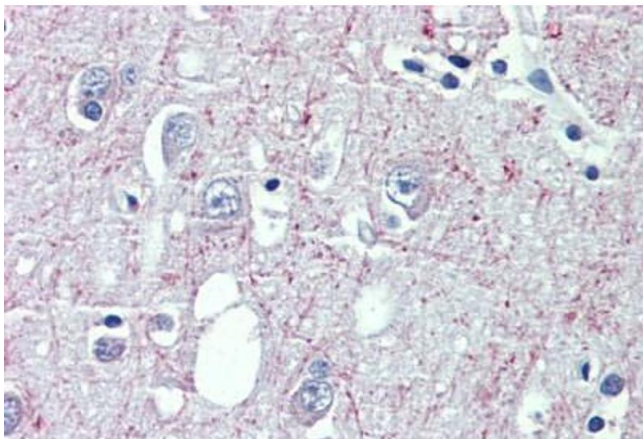
Comment: Target Species of Antibody: Human

Restrictions: For Research Use only

Handling

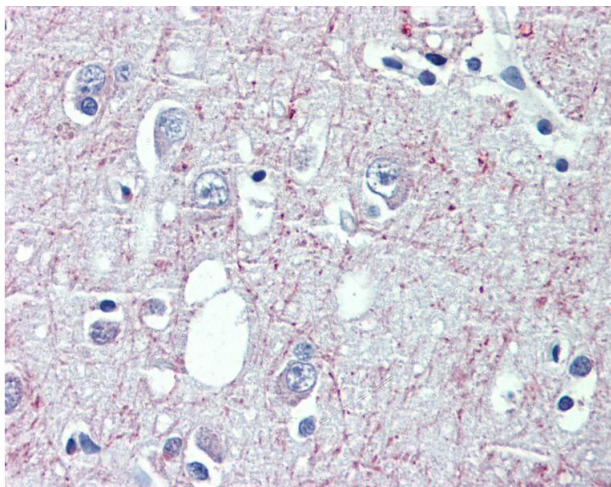
Format:	Liquid
Concentration:	Lot specific
Buffer:	Tris-buffered saline, pH 7.3, 0.5 % BSA, 0.02 % sodium azide
Preservative:	Sodium azide
Precaution of Use:	This product contains Sodium azide: a POISONOUS AND HAZARDOUS SUBSTANCE which should be handled by trained staff only.
Handling Advice:	Minimize freezing and thawing.
Storage:	-20 °C
Storage Comment:	Store at -20°C. Avoid freeze-thaw cycles.

Images



Immunohistochemistry (Formalin-fixed Paraffin-embedded Sections)

Image 1. Brain, cortex, Human: Formalin-Fixed, Paraffin-Embedded (FFPE)



Immunohistochemistry

Image 2. Anti-GABBR1 antibody IHC of human brain, cortex. Immunohistochemistry of formalin-fixed, paraffin-embedded tissue after heat-induced antigen retrieval. Antibody concentration 3.75 ug/ml.