

Datasheet for ABIN574072

anti-GABRA3 antibody (AA 480-492)



[Go to Product page](#)

2 Images

Overview

Quantity:	50 µg
Target:	GABRA3
Binding Specificity:	AA 480-492
Reactivity:	Human, Rat, Mouse, Cow, Rabbit, Horse, Monkey, Bat, Hamster
Host:	Goat
Clonality:	Polyclonal
Conjugate:	This GABRA3 antibody is un-conjugated
Application:	Immunohistochemistry (IHC), Immunohistochemistry (Paraffin-embedded Sections) (IHC (p))

Product Details

Brand:	IHC-plus™
Immunogen:	<p>Synthetic peptide NRESAIGMIRKQ from C-Terminus of human GABRA3 (NP_000799.1).</p> <p>Percent identity by BLAST analysis: Human, Gorilla, Gibbon, Monkey, Marmoset, Mouse, Rat, Hamster, Elephant, Bat, Bovine, Horse, Rabbit, Opossum, Platypus (100%), Panda, Dog, Chicken (92%), Turkey (85%).</p> <p>Type of Immunogen: Synthetic peptide</p>
Specificity:	Human GABRA3.
Predicted Reactivity:	<p>Percent identity by BLAST analysis: Human, Gorilla, Gibbon, Monkey, Marmoset, Mouse, Rat, Hamster, Elephant, Bat, Bovine, Horse, Rabbit, Opossum, Platypus (100%) Panda, Dog, Chicken (92%) Turkey (85%).</p>

Product Details

Purification: Immunoaffinity purified

Target Details

Target: GABRA3

Alternative Name: GABRA3 ([GABRA3 Products](#))

Background: Name/Gene ID: GABRA3
Subfamily: GABA A receptor
Family: Ion Channel

Synonyms: GABRA3, GABA(A) receptor, alpha 3, GABA A receptor alpha 3

Gene ID: 2556

NCBI Accession: [NP_000799](#)

UniProt: [P34903](#)

Application Details

Application Notes: Approved: IHC, IHC-P (2.5 µg/mL)

Usage: Immunohistochemistry: This antibody was validated for use in immunohistochemistry on a panel of 21 formalin-fixed, paraffin-embedded (FFPE) human tissues after heat induced antigen retrieval in pH 6.0 citrate buffer. After incubation with the primary antibody, slides were incubated with biotinylated secondary antibody, followed by alkaline phosphatase-streptavidin and chromogen. The stained slides were evaluated by a pathologist to confirm staining specificity. The optimal working concentration for this antibody was determined to be 2.5 µg/mL.

Comment: Target Species of Antibody: Human

Restrictions: For Research Use only

Handling

Format: Liquid

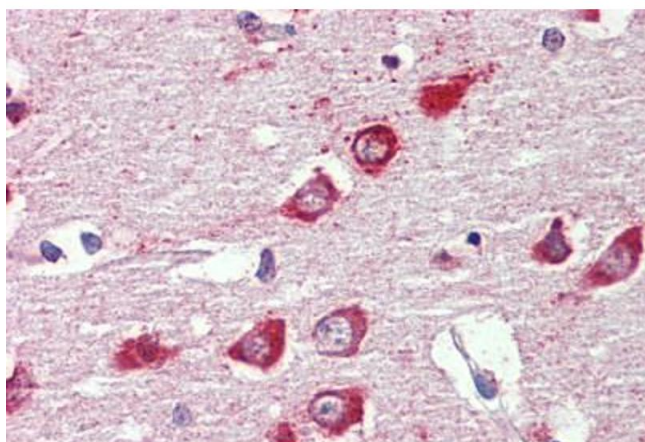
Concentration: Lot specific

Buffer: Tris-buffered saline, pH 7.3, 0.5 % BSA, 0.02 % sodium azide

Handling

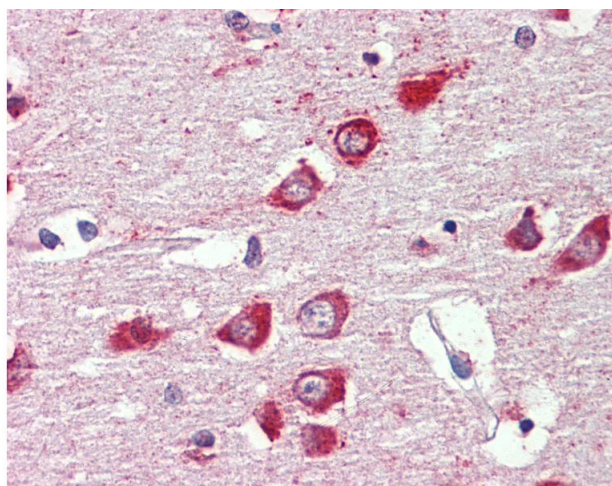
Preservative:	Sodium azide
Precaution of Use:	This product contains Sodium azide: a POISONOUS AND HAZARDOUS SUBSTANCE which should be handled by trained staff only.
Handling Advice:	Minimize freezing and thawing.
Storage:	-20 °C
Storage Comment:	Store at -20°C. Avoid freeze-thaw cycles.

Images



Immunohistochemistry (Formalin-fixed Paraffin-embedded Sections)

Image 1. Brain, cortex, Human: Formalin-Fixed, Paraffin-Embedded (FFPE)



Immunohistochemistry

Image 2. Anti-GABRA3 antibody IHC of human brain, cortex. Immunohistochemistry of formalin-fixed, paraffin-embedded tissue after heat-induced antigen retrieval. Antibody concentration 2.5 ug/ml.