

Datasheet for ABIN574097
anti-DLGAP1 antibody (AA 391-405)

2 Images

[Go to Product page](#)

Overview

Quantity:	50 µg
Target:	DLGAP1
Binding Specificity:	AA 391-405
Reactivity:	Human, Mouse, Rat, Dog, Hamster, Horse, Rabbit, Xenopus laevis, Bat, Cow
Host:	Goat
Clonality:	Polyclonal
Application:	Immunohistochemistry (IHC), Immunohistochemistry (Paraffin-embedded Sections) (IHC (p))

Product Details

Brand:	IHC-plus™
Immunogen:	Synthetic peptide C-KISNEHSPKLQIRSH from an internal region of human DLGAP1 (NP_004737.2, NP_001003809.1). Percent identity by BLAST analysis: Human, Gorilla, Orangutan, Gibbon, Mouse, Rat, Hamster, Elephant, Panda, Bovine, Dog, Bat, Horse, Rabbit, Opossum, Xenopus (100%), Turkey, Chicken, Seabass, Pufferfish, Zebrafish (93%), Stickleback (87%). Type of Immunogen: Synthetic peptide
Specificity:	Human DLGAP1. This antibody is expected to recognize both reported isoforms (NP_001003809.1, NP_004737.2)
Predicted Reactivity:	Percent identity by BLAST analysis: Human, Gorilla, Orangutan, Gibbon, Mouse, Rat, Hamster, Elephant, Panda, Bovine, Dog, Bat, Horse, Rabbit, Opossum, Xenopus (100%) Turkey, Chicken, Seabass, Pufferfish, Zebrafish (93%) Stickleback (87%).

Product Details

Purification: Immunoaffinity purified

Target Details

Target: DLGAP1

Alternative Name: DLGAP1 / SAPAP1 / GKAP ([DLGAP1 Products](#))

Background: Name/Gene ID: DLGAP1

Synonyms: DLGAP1, DAP-1, DAP-1-ALPHA, HGKAP, PSD-95/SAP90 binding protein 1, PSD-95/SAP90-binding protein 1, SAPAP1, DAP-1-BETA, DAP1, GKAP

Gene ID: 9229

NCBI Accession: [NP_004737](#), [NP_001003809](#)

UniProt: [O14490](#)

Application Details

Application Notes: Approved: IHC, IHC-P (3.75 µg/mL)

Usage: Immunohistochemistry: This antibody was validated for use in immunohistochemistry on a panel of 21 formalin-fixed, paraffin-embedded (FFPE) human tissues after heat induced antigen retrieval in pH 6.0 citrate buffer. After incubation with the primary antibody, slides were incubated with biotinylated secondary antibody, followed by alkaline phosphatase-streptavidin and chromogen. The stained slides were evaluated by a pathologist to confirm staining specificity. The optimal working concentration for this antibody was determined to be 3.75 µg/mL

Comment: Target Species of Antibody: Human

Restrictions: For Research Use only

Handling

Format: Liquid

Concentration: Lot specific

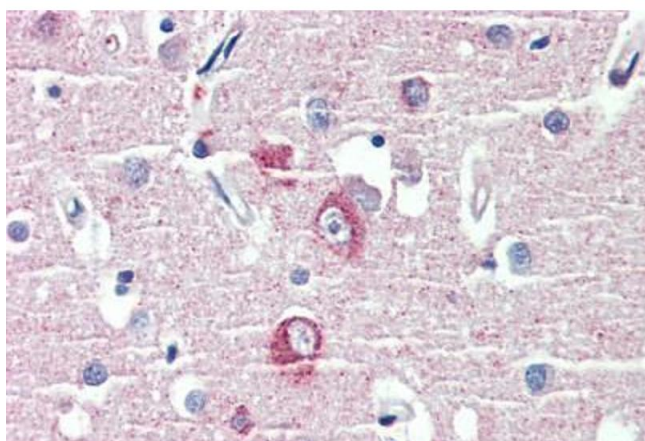
Buffer: Tris-buffered saline, pH 7.3, 0.5 % BSA, 0.02 % sodium azide

Preservative: Sodium azide

Handling

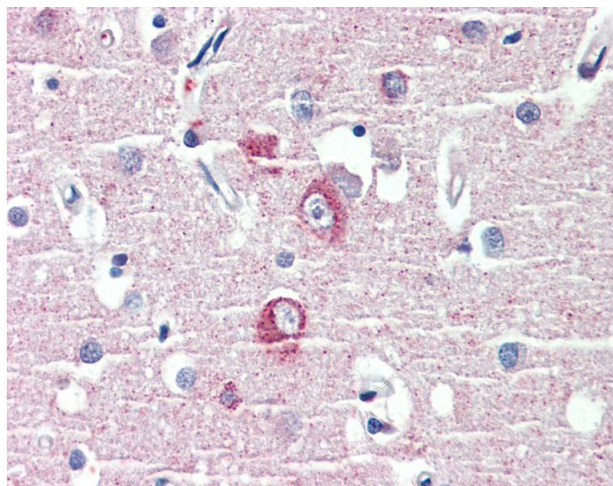
Precaution of Use:	This product contains Sodium azide: a POISONOUS AND HAZARDOUS SUBSTANCE which should be handled by trained staff only.
Handling Advice:	Minimize freezing and thawing.
Storage:	-20 °C
Storage Comment:	Store at -20°C. Avoid freeze-thaw cycles.

Images



Immunohistochemistry (Formalin-fixed Paraffin-embedded Sections)

Image 1. Brain, cortex, Human: Formalin-Fixed, Paraffin-Embedded (FFPE)



Immunohistochemistry

Image 2. Anti-DLGAP1 antibody IHC of human brain, cortex. Immunohistochemistry of formalin-fixed, paraffin-embedded tissue after heat-induced antigen retrieval. Antibody concentration 3.75 ug/ml.