

Datasheet for ABIN574103
anti-SLC2A2 antibody (AA 277-290)



[Go to Product page](#)

2 Images

Overview

Quantity:	50 µg
Target:	SLC2A2
Binding Specificity:	AA 277-290
Reactivity:	Human
Host:	Goat
Clonality:	Polyclonal
Conjugate:	This SLC2A2 antibody is un-conjugated
Application:	Immunohistochemistry (IHC), Immunohistochemistry (Paraffin-embedded Sections) (IHC (p))

Product Details

Brand:	IHC-plus™
Immunogen:	Synthetic peptide C-RKEREEASSEQKVS from an internal region of human SLC2A2 / GLUT2 (NP_000331.1). Percent identity by BLAST analysis: Human, Gorilla, Gibbon (100%), Monkey, Marmoset, Panda, Bat, Rabbit, Horse, Pig (93%), Rat, Sheep, Elephant, Dog, Bovine (86%). Type of Immunogen: Synthetic peptide
Specificity:	Human SLC2A2 / GLUT2.
Predicted Reactivity:	Percent identity by BLAST analysis: Human, Gorilla, Gibbon (100%) Monkey, Marmoset, Panda, Bat, Rabbit, Horse, Pig (93%) Rat, Sheep, Elephant, Dog, Bovine (86%).
Purification:	Immunoaffinity purified

Target Details

Target:	SLC2A2
Alternative Name:	SLC2A2 / GLUT2 (SLC2A2 Products)
Background:	Name/Gene ID: SLC2A2 Subfamily: Sugar transporter Family: Transporter Synonyms: SLC2A2, GLUT-2, GLUT2, Glucose transporter 2
Gene ID:	6514
NCBI Accession:	NP_000331
UniProt:	P11168
Pathways:	Warburg Effect

Application Details

Application Notes:	Approved: IHC, IHC-P (2.5 µg/mL) Usage: Immunohistochemistry: This antibody was validated for use in immunohistochemistry on a panel of 21 formalin-fixed, paraffin-embedded (FFPE) human tissues after heat induced antigen retrieval in pH 6.0 citrate buffer. After incubation with the primary antibody, slides were incubated with biotinylated secondary antibody, followed by alkaline phosphatase-streptavidin and chromogen. The stained slides were evaluated by a pathologist to confirm staining specificity. The optimal working concentration for this antibody was determined to be 2.5 µg/mL
Comment:	Target Species of Antibody: Human
Restrictions:	For Research Use only

Handling

Format:	Liquid
Concentration:	Lot specific
Buffer:	Tris-buffered saline, pH 7.3, 0.5 % BSA, 0.02 % sodium azide
Preservative:	Sodium azide
Precaution of Use:	This product contains Sodium azide: a POISONOUS AND HAZARDOUS SUBSTANCE which

Handling

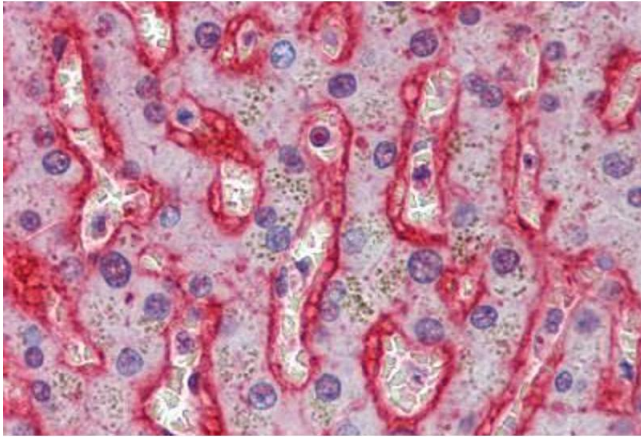
should be handled by trained staff only.

Handling Advice: Minimize freezing and thawing.

Storage: -20 °C

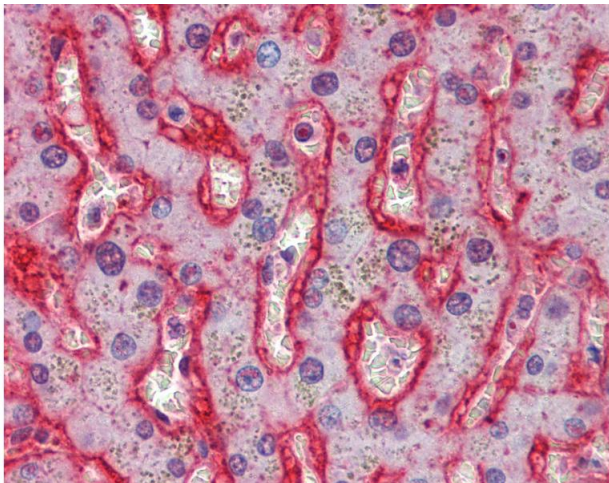
Storage Comment: Store at -20°C. Avoid freeze-thaw cycles.

Images



Immunohistochemistry (Formalin-fixed Paraffin-embedded Sections)

Image 1. Liver, Human: Formalin-Fixed, Paraffin-Embedded (FFPE)



Immunohistochemistry

Image 2. Anti-GLUT2 antibody IHC of human liver. Immunohistochemistry of formalin-fixed, paraffin-embedded tissue after heat-induced antigen retrieval. Antibody concentration 2.5 ug/ml.