

Datasheet for ABIN574130
anti-CAD antibody (AA 1625-1900)



[Go to Product page](#)

3 Images

Overview

Quantity:	50 µL
Target:	CAD
Binding Specificity:	AA 1625-1900
Reactivity:	Human
Host:	Rabbit
Clonality:	Polyclonal
Conjugate:	This CAD antibody is un-conjugated
Application:	Western Blotting (WB), Immunohistochemistry (IHC), Immunohistochemistry (Paraffin-embedded Sections) (IHC (p))

Product Details

Brand:	IHC-plus™
Immunogen:	Recombinant protein fragment containing a sequence corresponding to a region within amino acids 1625 and 1900 of Human CAD. Type of Immunogen: Recombinant protein
Specificity:	Human CAD. Predicted cross-reactivity based on amino acid sequence homology: mouse (92 %), rat (92 %).
Purification:	Immunoaffinity purified

Target Details

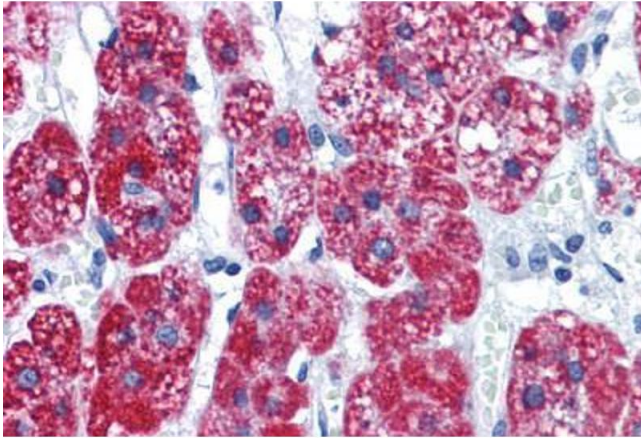
Target:	CAD
Alternative Name:	CAD (CAD Products)
Background:	Name/Gene ID: CAD Subfamily: Metallopeptidase M38 Family: Protease Synonyms: CAD, CAD trifunctional protein, DFF-40, DFF40, CAD protein, CPAN, DFF2
Gene ID:	790
UniProt:	P27708
Pathways:	Production of Molecular Mediator of Immune Response , Ribonucleoside Biosynthetic Process

Application Details

Application Notes:	Approved: IHC, IHC-P (10 µg/mL), WB (1:500 - 1:3000)
Comment:	Target Species of Antibody: Human
Restrictions:	For Research Use only

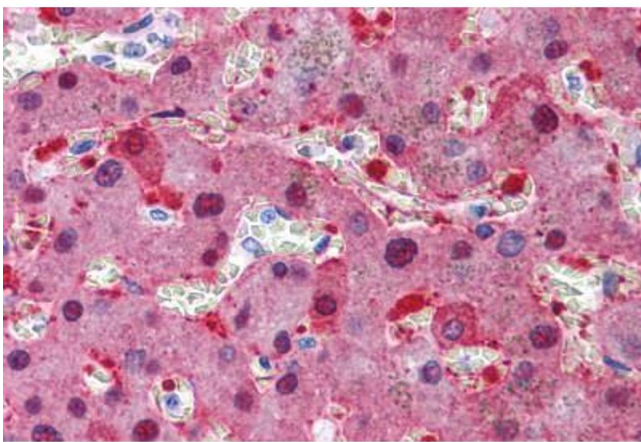
Handling

Format:	Liquid
Concentration:	Lot specific
Buffer:	PBS, pH 7, 10 % Glycerol, 0.01 % Thimerosal
Preservative:	Thimerosal (Merthiolate)
Precaution of Use:	This product contains Thimerosal (Merthiolate): a POISONOUS AND HAZARDOUS SUBSTANCE which should be handled by trained staff only.
Handling Advice:	Minimize freezing and thawing.
Storage:	-20 °C
Storage Comment:	Aliquot and store at -20°C. Avoid freeze-thaw cycles.



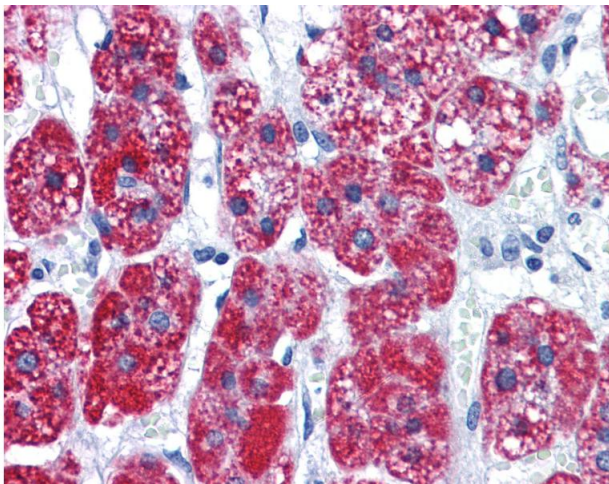
Immunohistochemistry (Formalin-fixed Paraffin-embedded Sections)

Image 1. Human Adrenal: Formalin-Fixed, Paraffin-Embedded (FFPE)



Immunohistochemistry (Formalin-fixed Paraffin-embedded Sections)

Image 2. Human Liver: Formalin-Fixed, Paraffin-Embedded (FFPE)



Immunohistochemistry

Image 3. Anti-CAD antibody IHC of human adrenal. Immunohistochemistry of formalin-fixed, paraffin-embedded tissue after heat-induced antigen retrieval. Antibody concentration 10 ug/ml.