

Datasheet for ABIN574144
anti-GDI2 antibody (AA 1-197)



[Go to Product page](#)

3 Images

Overview

Quantity:	50 µL
Target:	GDI2
Binding Specificity:	AA 1-197
Reactivity:	Human
Host:	Rabbit
Clonality:	Polyclonal
Conjugate:	This GDI2 antibody is un-conjugated
Application:	Western Blotting (WB), Immunohistochemistry (IHC), Immunohistochemistry (Paraffin-embedded Sections) (IHC (p))

Product Details

Brand:	IHC-plus™
Immunogen:	Recombinant protein fragment containing a sequence corresponding to a region within amino acids 1 and 197 of Human Rho GDI2. Type of Immunogen: Recombinant protein
Specificity:	Human Rho GDI2. Predicted cross-reactivity based on amino acid sequence homology: mouse (90 %), rat (89 %), bovine (93 %).
Purification:	Immunoaffinity purified

Target Details

Target: GDI2

Alternative Name: GDI2 ([GDI2 Products](#))

Background: Name/Gene ID: GDI2

Synonyms: GDI2, GDP dissociation inhibitor 2, GDI-2, Rab GDI beta, RABGDIB

Gene ID: 2665

UniProt: [P50395](#)

Application Details

Application Notes: Approved: IHC, IHC-P (10 µg/mL), WB (1:500 - 1:3000)

Comment: Target Species of Antibody: Human

Restrictions: For Research Use only

Handling

Format: Liquid

Concentration: Lot specific

Buffer: 0.1 M Tris-glycine, pH 7, 10 % Glycerol, 0.01 % Thimerosal

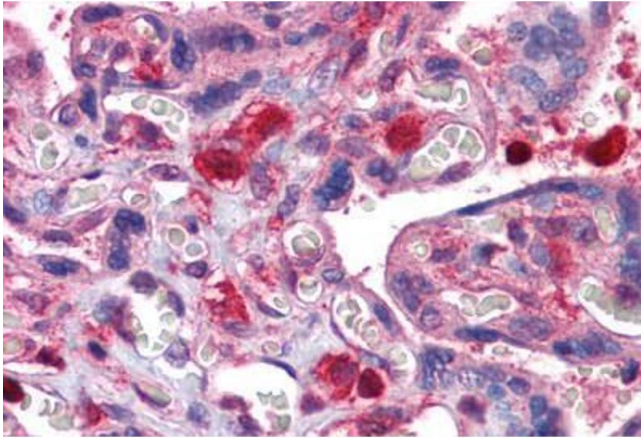
Preservative: Thimerosal (Merthiolate)

Precaution of Use: This product contains Thimerosal (Merthiolate): a POISONOUS AND HAZARDOUS SUBSTANCE which should be handled by trained staff only.

Handling Advice: Minimize freezing and thawing.

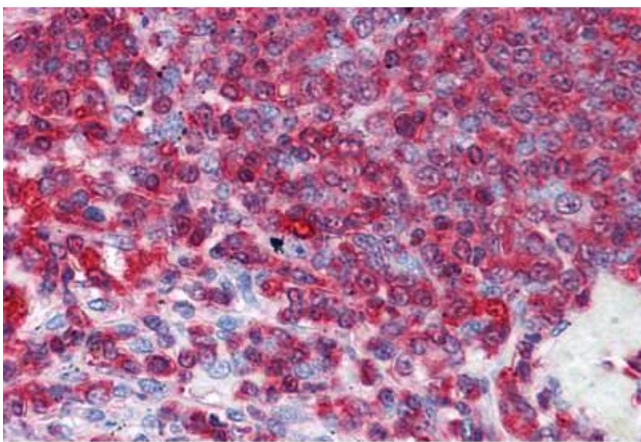
Storage: -20 °C

Storage Comment: Aliquot and store at -20°C. Avoid freeze-thaw cycles.



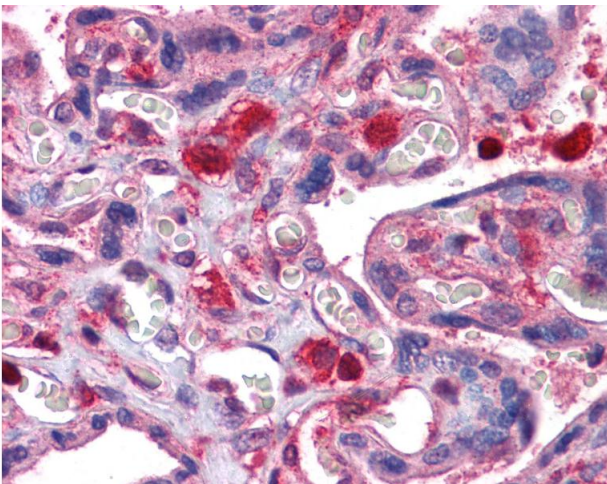
Immunohistochemistry (Formalin-fixed Paraffin-embedded Sections)

Image 1. Human Placenta: Formalin-Fixed, Paraffin-Embedded (FFPE)



Immunohistochemistry (Formalin-fixed Paraffin-embedded Sections)

Image 2. Human Spleen: Formalin-Fixed, Paraffin-Embedded (FFPE)



Immunohistochemistry

Image 3. Anti-GDI2 antibody IHC of human placenta. Immunohistochemistry of formalin-fixed, paraffin-embedded tissue after heat-induced antigen retrieval. Antibody concentration 10 ug/ml.