

Datasheet for ABIN574160
anti-Coagulation Factor X antibody

3 Images

[Go to Product page](#)

Overview

Quantity:	50 µg
Target:	Coagulation Factor X (F10)
Reactivity:	Human
Host:	Sheep
Clonality:	Polyclonal
Conjugate:	This Coagulation Factor X antibody is un-conjugated
Application:	ELISA, Immunohistochemistry (IHC), Immunohistochemistry (Paraffin-embedded Sections) (IHC (p)), Immunodiffusion (ID), Immunoelectrophoresis (IEP)

Product Details

Brand:	IHC-plus™
Immunogen:	Human Factor X purified from plasma, activated and active site blocked. Type of Immunogen: Purified protein
Isotype:	IgG
Specificity:	Affinity purified IgG was analyzed by immunoelectrophoresis. Only one arc was seen with normal plasma. No arc was seen with Factor X deficient plasma.
Purification:	Immunoaffinity purified

Target Details

Target:	Coagulation Factor X (F10)
---------	----------------------------

Target Details

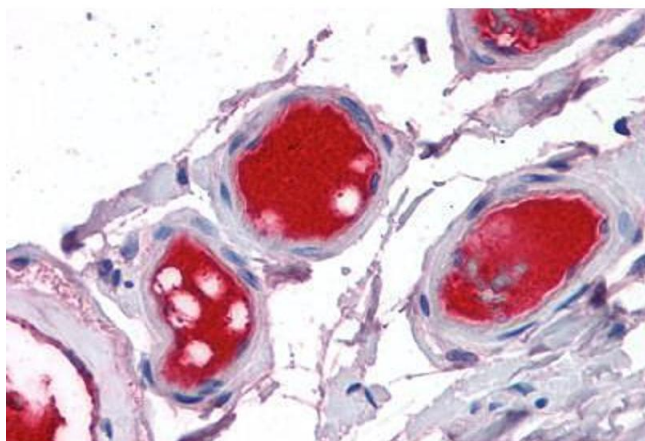
Alternative Name:	F10 / Factor X (F10 Products)
Background:	Name/Gene ID: F10 Subfamily: Serine S1 Family: Protease Synonyms: F10, Factor X, FX, Factor X deficiency, Stuart factor, Stuart-Prower factor, Coagulation factor X, Factor Xa, FXA, Prothrombinase
Gene ID:	2159
UniProt:	P00742

Application Details

Application Notes:	Approved: ELISA, ID, IE, IHC, IHC-P (5 µg/mL) Usage: Suitable for use in ELISA, Immunoelectrophoresis, Immunohistochemistry with FFPE human samples and Immunodiffusion (vs. citrated plasma).
Comment:	Target Species of Antibody: Human
Restrictions:	For Research Use only

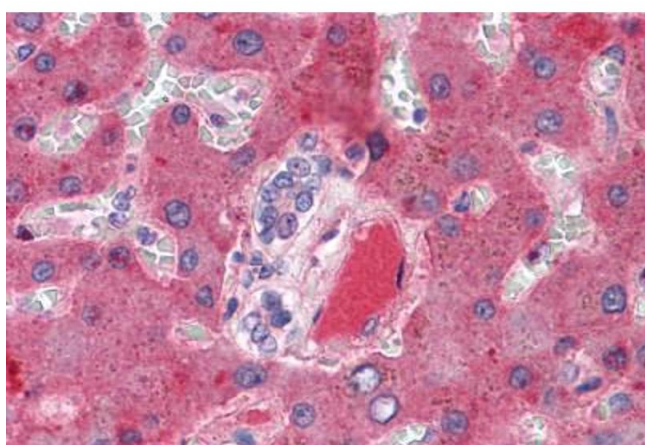
Handling

Format:	Liquid
Concentration:	Lot specific
Buffer:	10 mM HEPES, pH 7.4, 0.15 M sodium chloride, 50 % glycerol.
Handling Advice:	Avoid repeat freeze-thaw cycles.
Storage:	4 °C, -20 °C
Storage Comment:	Short term: 4°C. Long term: Store at -20°C. Avoid freeze-thaw cycles.



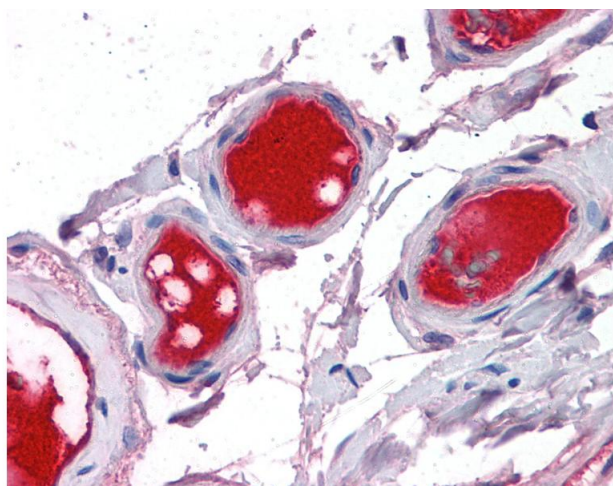
Immunohistochemistry (Formalin-fixed Paraffin-embedded Sections)

Image 1. Small intestine, vessels: Formalin-Fixed, Paraffin-Embedded (FFPE)



Immunohistochemistry (Formalin-fixed Paraffin-embedded Sections)

Image 2. Liver, vessel: Formalin-Fixed, Paraffin-Embedded (FFPE)



Immunohistochemistry

Image 3. Anti-F10 / Factor X antibody IHC of human small intestine, vessels. Immunohistochemistry of formalin-fixed, paraffin-embedded tissue after heat-induced antigen retrieval. Antibody concentration 5 ug/ml.