

Datasheet for ABIN574167

anti-MUC1 antibody

4 Images

[Go to Product page](#)

Overview

Quantity:	0.25 mg
Target:	MUC1
Reactivity:	Human
Host:	Mouse
Clonality:	Monoclonal
Conjugate:	This MUC1 antibody is un-conjugated
Application:	Immunohistochemistry (IHC), ELISA, Immunohistochemistry (Paraffin-embedded Sections) (IHC (p)), Immunohistochemistry (Frozen Sections) (IHC (fro))

Product Details

Brand:	IHC-plus™
Immunogen:	High molecular weight (>300kD) glycoprotein from human milk-fat globule molecule.
Isotype:	IgG
Specificity:	Recognizes underglycosylated and natural MUC1 protein (isolated from human milk by affinity chromatography). Does not cross-react with normal serum proteins and human tissues of nonepithelial origin. Binds with high efficiency with different epitopes within the VNTR tandem repeat peptide conformations and peptide-carbohydrate compositions.
Purification:	Protein A purified

Target Details

Target:	MUC1
---------	------

Target Details

Alternative Name:	EMA / MUC1 (MUC1 Products)
Background:	Name/Gene ID: MUC1 Family: Mucin Synonyms: MUC1, CA15-3, CD227, Carcinoma-associated mucin, CD227 antigen, DF3 antigen, Episialin, Epithelial membrane antigen, H23 antigen, H23AG, Krebs von den Lungen-6, MAM6, MUC1/ZD, MUC-1/SEC, Mucin-1, Pem, KL-6, MUC-1/X, Tumor-associated mucin, Peanut-reactive urinary mucin, Polymorphic epithelial mucin, PUM, EMA, MUC-1, Mucin 1, transmembrane
Gene ID:	4582
UniProt:	P15941
Pathways:	Negative Regulation of intrinsic apoptotic Signaling

Application Details

Application Notes:	Approved: ELISA, IHC, IHC-Fr, IHC-P (10 µg/mL) Usage: Immunohistochemistry: Validated for use in immunohistochemistry on a panel of 21 formalin-fixed, paraffin-embedded (FFPE) human tissues after heat induced antigen retrieval in pH 6.0 citrate buffer. After incubation with the primary antibody, slides were incubated with biotinylated secondary antibody, followed by alkaline phosphatase-streptavidin and chromogen. The stained slides were evaluated by a pathologist to confirm staining specificity. The optimal working concentration was determined to be 10 µg/mL.
Comment:	Target Species of Antibody: Human
Restrictions:	For Research Use only

Handling

Format:	Liquid
Concentration:	Lot specific
Buffer:	PBS, pH 7.4, 0.1 % sodium azide.
Preservative:	Sodium azide
Precaution of Use:	This product contains Sodium azide: a POISONOUS AND HAZARDOUS SUBSTANCE which

Handling

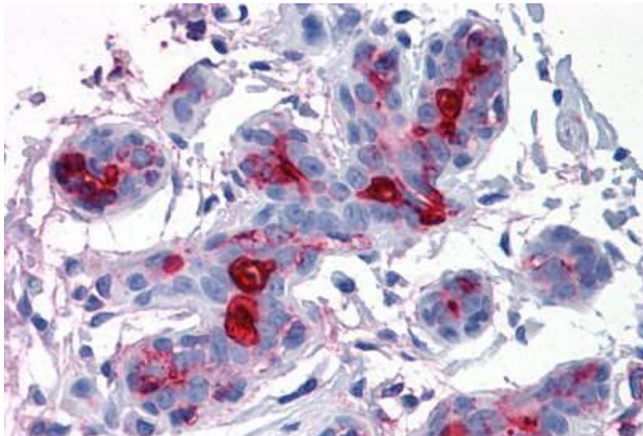
should be handled by trained staff only.

Handling Advice: Avoid repeat freeze-thaw cycles.

Storage: 4 °C, -20 °C

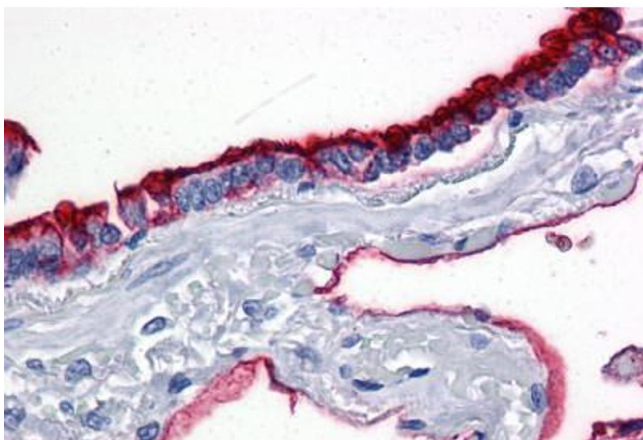
Storage Comment: Short term: 4°C. Long term: Store at -20°C. Avoid freeze-thaw cycles.

Images



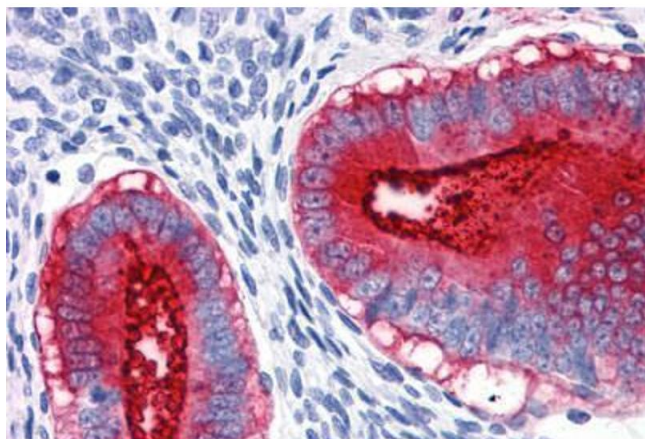
Immunohistochemistry (Formalin-fixed Paraffin-embedded Sections)

Image 1. Breast, Human: Formalin-Fixed, Paraffin-Embedded (FFPE)



Immunohistochemistry (Formalin-fixed Paraffin-embedded Sections)

Image 2. Lung, Human: Formalin-Fixed, Paraffin-Embedded (FFPE)



Immunohistochemistry (Formalin-fixed Paraffin-embedded Sections)

Image 3. Uterus, Human: Formalin-Fixed, Paraffin-Embedded (FFPE)

Please check the [product details page](#) for more images. Overall 4 images are available for ABIN574167.