

Datasheet for ABIN574171
anti-LAMP1 antibody (FITC)[Go to Product page](#)

3 Images

Overview

Quantity:	250 µg
Target:	LAMP1
Reactivity:	Mouse
Host:	Rat
Clonality:	Monoclonal
Conjugate:	This LAMP1 antibody is conjugated to FITC
Application:	Western Blotting (WB), Flow Cytometry (FACS), Immunohistochemistry (IHC), Immunoprecipitation (IP), Immunohistochemistry (Paraffin-embedded Sections) (IHC (p)), Immunohistochemistry (Frozen Sections) (IHC (fro))

Product Details

Brand:	IHC-plus™
Immunogen:	Plasma membrane fraction of mouse embryo NIH3T3 cell line.
Isotype:	IgG2a kappa
Specificity:	Recognizes murine CD107a/LAMP-1 (Mr 110-140kD with a core protein of Mr ~40kD).
Purification:	Purified

Target Details

Target:	LAMP1
Alternative Name:	LAMP1 / CD107a (LAMP1 Products)

Target Details

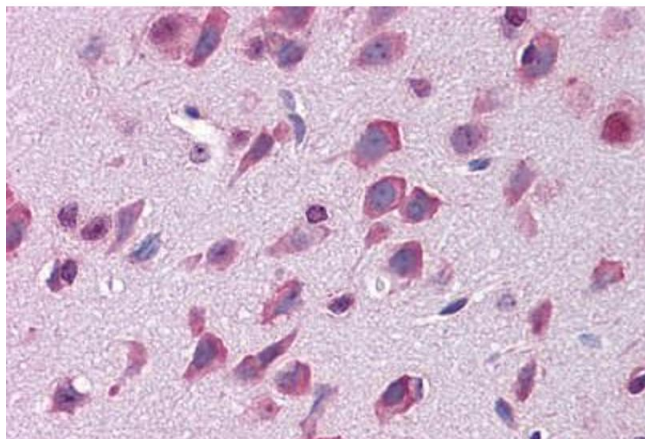
Background:	Name/Gene ID: LAMP1 Synonyms: LAMP1, CD107a, CD107a antigen, LAMP-1, LGP120, LAMPA
Gene ID:	3916
UniProt:	P11279
Pathways:	Autophagy

Application Details

Application Notes:	Approved: Flo, IHC, IHC-Fr, IHC-P (10 µg/mL), IP, WB Usage: Flow cytometry, Immunoaffinity chromatography, Immunohistochemistry-frozen and FFPE, Immunoprecipitation and Western blotting. Flow Cytometry: 1 µg/1 x10 ⁶ . The applications listed have been tested for the unconjugated form of this product. Other forms have not been tested.
Comment:	Target Species of Antibody: Mouse
Restrictions:	For Research Use only

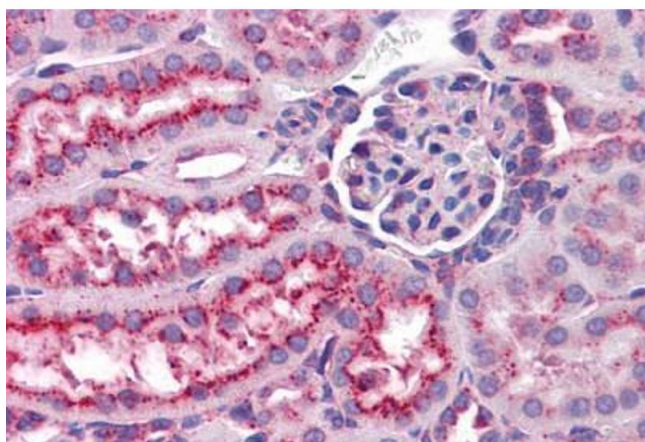
Handling

Format:	Liquid
Concentration:	Lot specific
Buffer:	PBS, sodium azide.
Preservative:	Sodium azide
Precaution of Use:	This product contains Sodium azide: a POISONOUS AND HAZARDOUS SUBSTANCE which should be handled by trained staff only.
Handling Advice:	Avoid repeat freeze-thaw cycles.
Storage:	4 °C,-20 °C
Storage Comment:	Short term: 4°C. Long term: Store at -20°C. Avoid freeze-thaw cycles.



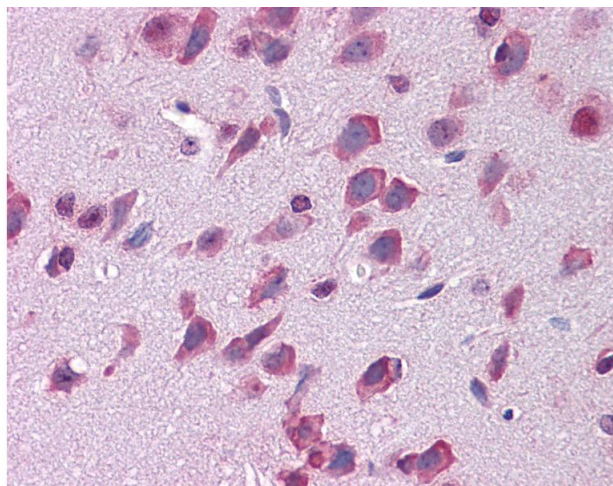
Immunohistochemistry (Formalin-fixed Paraffin-embedded Sections)

Image 1. Mouse brain: Formalin-Fixed, Paraffin-Embedded (FFPE)



Immunohistochemistry (Formalin-fixed Paraffin-embedded Sections)

Image 2. Mouse kidney: Formalin-Fixed, Paraffin-Embedded (FFPE)



Immunohistochemistry

Image 3. Anti-LAMP1 antibody IHC of mouse brain. Immunohistochemistry of formalin-fixed, paraffin-embedded tissue after heat-induced antigen retrieval. Antibody concentration 10 ug/ml. This image was taken for the unconjugated form of this product. Other form ...