

Datasheet for ABIN574182  
**anti-MAPT antibody (Ser404)**



[Go to Product page](#)

3 Images

## Overview

Quantity:	100 µg
Target:	MAPT
Binding Specificity:	Ser404
Reactivity:	Human, Rat, Mouse, Cow, Dog, Monkey, Rabbit, Goat, Horse
Host:	Rabbit
Clonality:	Polyclonal
Conjugate:	This MAPT antibody is un-conjugated
Application:	Western Blotting (WB), Immunohistochemistry (IHC), Immunohistochemistry (Paraffin-embedded Sections) (IHC (p))

## Product Details

Brand:	IHC-plus™
Immunogen:	Synthesized non-phosphopeptide derived from human Tau around the phosphorylation site of serine 404 (D-T-SP-P-R).  Type of Immunogen: Synthetic peptide
Isotype:	IgG
Specificity:	Endogenous levels of total Tau protein
Purification:	Immunoaffinity purified

## Target Details

---

Target:	MAPT
Alternative Name:	MAPT / tau ( <a href="#">MAPT Products</a> )
Background:	Name/Gene ID: MAPT  Synonyms: MAPT, FTDP-17, MSTD, Neurofibrillary tangle protein, PHF-tau, MTBT2, PPND, DDPAC, MAPTL, MTBT1, Paired helical filament-tau, TAU
Gene ID:	4137
Pathways:	<a href="#">MAPK Signaling</a> , <a href="#">Microtubule Dynamics</a> , <a href="#">M Phase</a> , <a href="#">Regulation of Cell Size</a>

## Application Details

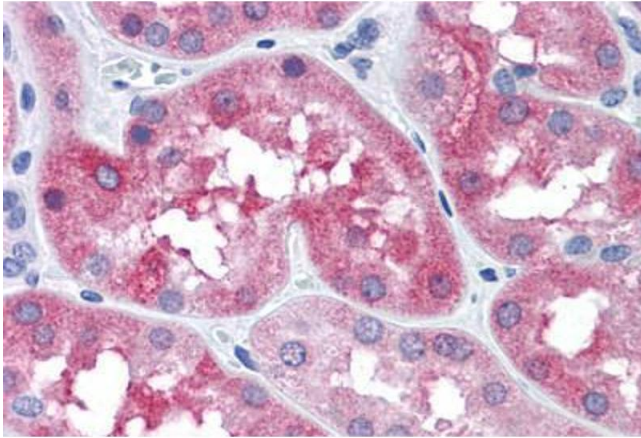
---

Application Notes:	Approved: IHC, IHC-P (15 µg/mL), WB (1:500 - 1:1000)
Comment:	Target Species of Antibody: Human
Restrictions:	For Research Use only

## Handling

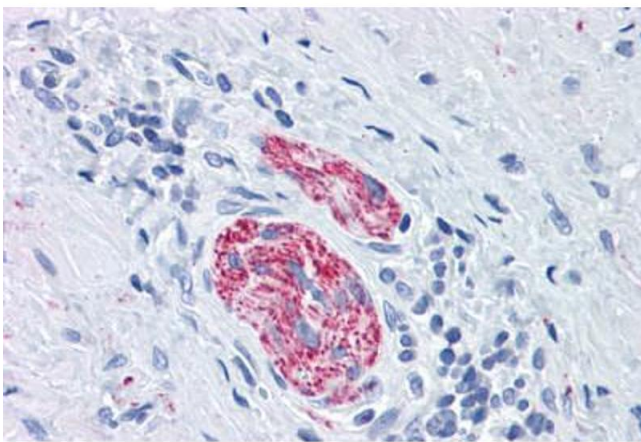
---

Format:	Liquid
Concentration:	Lot specific
Buffer:	PBS (without Mg <sup>2+</sup> , Ca <sup>2+</sup> ), pH 7.4, 150 mM sodium chloride, 0.02 % sodium azide, 50 % glycerol.
Preservative:	Sodium azide
Precaution of Use:	This product contains Sodium azide: a POISONOUS AND HAZARDOUS SUBSTANCE which should be handled by trained staff only.
Handling Advice:	Minimize freezing and thawing.
Storage:	-20 °C
Storage Comment:	Aliquot and store at -20°C. Avoid freeze-thaw cycles.



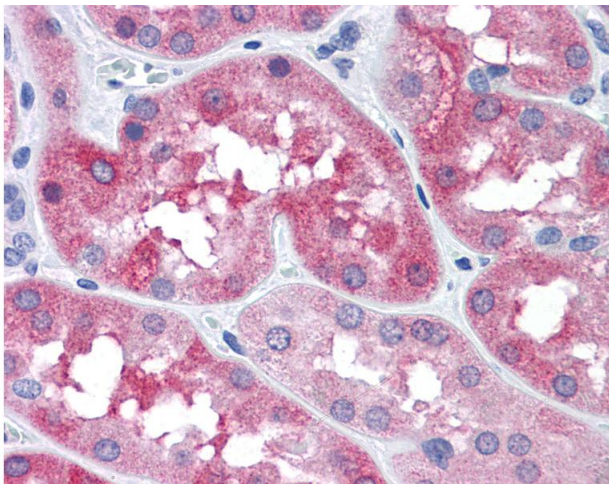
**Immunohistochemistry (Formalin-fixed Paraffin-embedded Sections)**

**Image 1.** Human Kidney: Formalin-Fixed, Paraffin-Embedded (FFPE)



**Immunohistochemistry (Formalin-fixed Paraffin-embedded Sections)**

**Image 2.** Human Nerve: Formalin-Fixed, Paraffin-Embedded (FFPE)



**Immunohistochemistry**

**Image 3.** Anti-MAPT / Tau antibody IHC of human kidney. Immunohistochemistry of formalin-fixed, paraffin-embedded tissue after heat-induced antigen retrieval. Antibody concentration 15 ug/ml.