



Datasheet for ABIN574210

## anti-ATP2A1/SERCA1 antibody (AA 522-613)



[Go to Product page](#)

### 3 Images

#### Overview

Quantity:	50 µg
Target:	ATP2A1/SERCA1 (ATP2A1)
Binding Specificity:	AA 522-613
Reactivity:	Human
Host:	Mouse
Clonality:	Monoclonal
Conjugate:	This ATP2A1/SERCA1 antibody is un-conjugated
Application:	Western Blotting (WB), ELISA, Immunohistochemistry (IHC), Immunohistochemistry (Paraffin-embedded Sections) (IHC (p)), Immunofluorescence (IF)

#### Product Details

Brand:	IHC-plus™
Immunogen:	ATP2A1 (NP_775293, 522 a.a. ~ 613 a.a) partial recombinant protein with GST tag. MW of the GST tag alone is 26 KDa.  Type of Immunogen: Recombinant protein
Clone:	1B11
Isotype:	IgG1 kappa
Purification:	Purified from ascites by Protein A

## Target Details

---

Target:	ATP2A1/SERCA1 (ATP2A1)
Alternative Name:	ATP2A1 / SERCA1 ( <a href="#">ATP2A1 Products</a> )
Background:	Name/Gene ID: ATP2A1 Subfamily: ATPase - P type, type IIA Family: Transporter  Synonyms: ATP2A1, SERCA1, ATP2A, Calcium pump 1, SR Ca(2+)-ATPase 1
Gene ID:	487
NCBI Accession:	<a href="#">NP_775293</a>
UniProt:	<a href="#">O14983</a>
Pathways:	<a href="#">Ribonucleoside Biosynthetic Process</a>

## Application Details

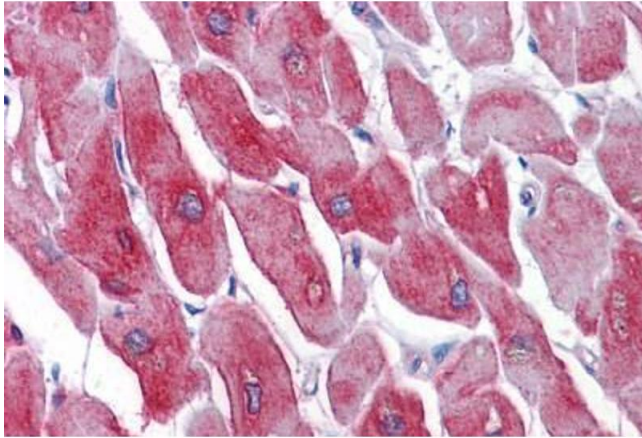
---

Application Notes:	Approved: ELISA (2.5 µg/mL), IF (10 µg/mL), IHC, IHC-P (5 µg/mL), WB  Usage: Western Blot (Cell lysate) - positive control A-431. Western Blot, use antibody at 1:500 to 1:1000 dilution (Transfected lysate) - positive control transfected 293T cell line. Immunofluorescence (10 µg/mL) - positive control A-431 cells. ELISA - Recombinant protein.
Comment:	Target Species of Antibody: Human
Restrictions:	For Research Use only

## Handling

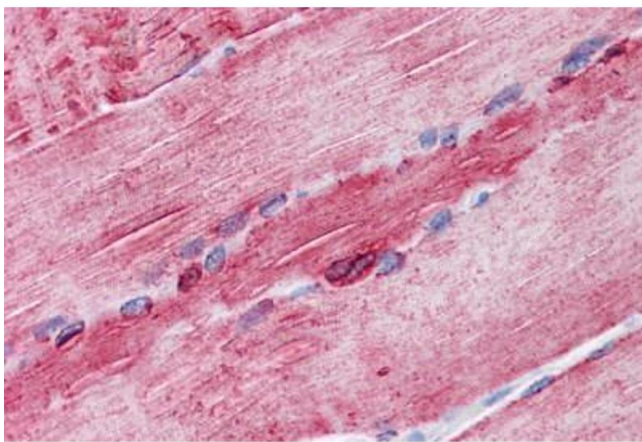
---

Format:	Liquid
Concentration:	Lot specific
Buffer:	PBS, pH 7.4.
Handling Advice:	Aliquot to Avoid freeze/thaw cycles.
Storage:	-20 °C
Storage Comment:	Store at -20°C. Aliquot to avoid freeze/thaw cycles.



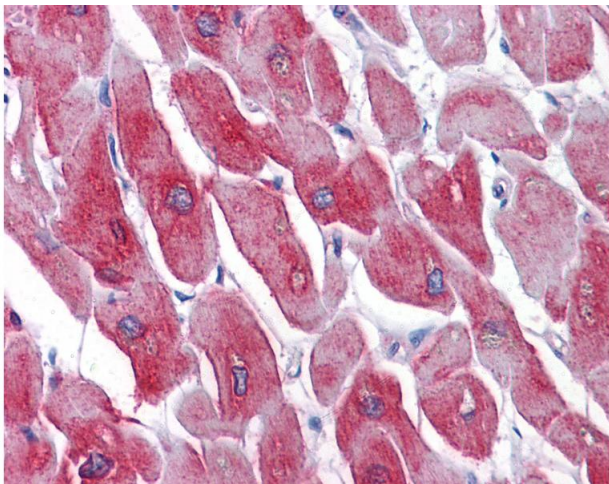
### Immunohistochemistry (Formalin-fixed Paraffin-embedded Sections)

**Image 1.** Human Heart: Formalin-Fixed, Paraffin-Embedded (FFPE)



### Immunohistochemistry (Formalin-fixed Paraffin-embedded Sections)

**Image 2.** Human Skeletal muscle: Formalin-Fixed, Paraffin-Embedded (FFPE)



### Immunohistochemistry

**Image 3.** Anti-SERCA1 antibody IHC of human heart. Immunohistochemistry of formalin-fixed, paraffin-embedded tissue after heat-induced antigen retrieval. Antibody concentration 5 ug/ml.