



[Go to Product page](#)

Datasheet for ABIN574228

anti-CLIC1 antibody (AA 1-242)

3 Images

Overview

Quantity:	50 µg
Target:	CLIC1
Binding Specificity:	AA 1-242
Reactivity:	Human
Host:	Mouse
Clonality:	Monoclonal
Conjugate:	This CLIC1 antibody is un-conjugated
Application:	Western Blotting (WB), Immunohistochemistry (IHC), ELISA, Immunohistochemistry (Paraffin-embedded Sections) (IHC (p))

Product Details

Brand:	IHC-plus™
Immunogen:	CLIC1 (AAH64527, 1 a.a. ~ 242 a.a) full length recombinant protein with GST tag. MW of the GST tag alone is 26 KDa. Type of Immunogen: Recombinant protein
Clone:	3F9
Isotype:	IgG2a kappa
Purification:	Purified from ascites by Protein A

Target Details

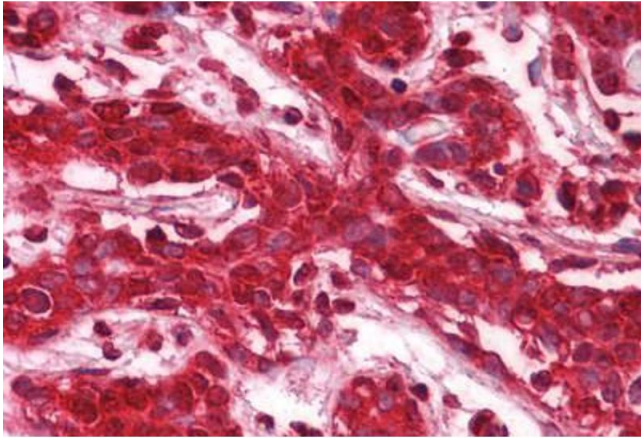
Target:	CLIC1
Alternative Name:	CLIC1 / NCC27 (CLIC1 Products)
Background:	Name/Gene ID: CLIC1 Subfamily: Chloride channel - intracellular Family: Ion Channel Synonyms: CLIC1, Chloride channel ABP, G6, Nuclear chloride channel-27, p64CLCP, RNCC protein, HRNCC, NCC27
Gene ID:	1192
UniProt:	O00299

Application Details

Application Notes:	Approved: ELISA, IHC, IHC-P (5 µg/mL), WB Usage: Western Blot (Cell lysate) - positive control 293. Western Blot (Transfected lysate) - positive control transfected 293T cell line.
Comment:	Target Species of Antibody: Human
Restrictions:	For Research Use only

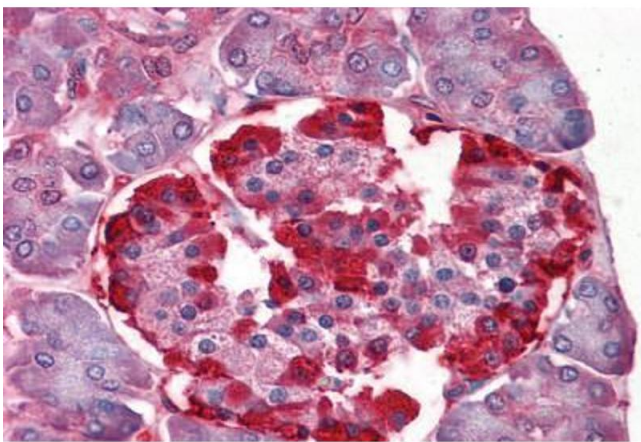
Handling

Format:	Liquid
Concentration:	Lot specific
Buffer:	PBS, pH 7.4
Handling Advice:	Aliquot to Avoid freeze/thaw cycles.
Storage:	-20 °C
Storage Comment:	Store at -20°C. Aliquot to avoid freeze/thaw cycles.



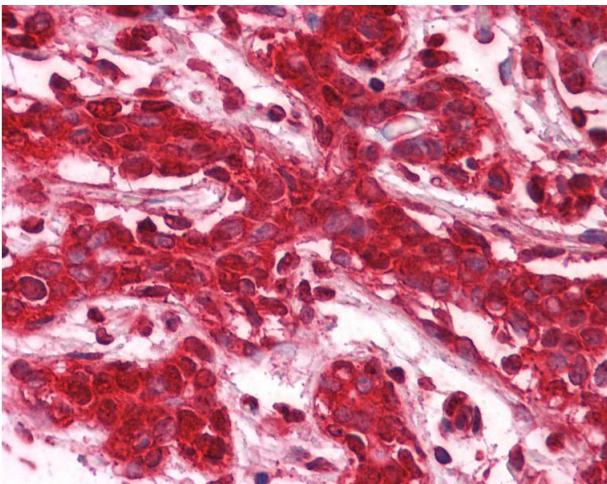
Immunohistochemistry (Formalin-fixed Paraffin-embedded Sections)

Image 1. Human Breast: Formalin-Fixed, Paraffin-Embedded (FFPE)



Immunohistochemistry (Formalin-fixed Paraffin-embedded Sections)

Image 2. Human Pancreas: Formalin-Fixed, Paraffin-Embedded (FFPE)



Immunohistochemistry

Image 3. Anti-CLIC1 antibody IHC of human breast. Immunohistochemistry of formalin-fixed, paraffin-embedded tissue after heat-induced antigen retrieval. Antibody concentration 5 ug/ml.