



[Go to Product page](#)

Datasheet for ABIN574233

anti-Cathepsin K antibody (AA 220-331)

3 Images

Overview

Quantity:	50 µg
Target:	Cathepsin K (CTSK)
Binding Specificity:	AA 220-331
Reactivity:	Human
Host:	Mouse
Clonality:	Monoclonal
Application:	Western Blotting (WB), Immunohistochemistry (IHC), ELISA, Immunohistochemistry (Paraffin-embedded Sections) (IHC (p))

Product Details

Brand:	IHC-plus™
Immunogen:	CTSK (AAH16058, 220 a.a. ~ 331 a.a) partial recombinant protein with GST tag. MW of the GST tag alone is 26 KDa. Type of Immunogen: Recombinant protein
Clone:	2F1
Isotype:	IgG2a kappa
Purification:	Purified from ascites by Protein A

Target Details

Target:	Cathepsin K (CTSK)
---------	--------------------

Target Details

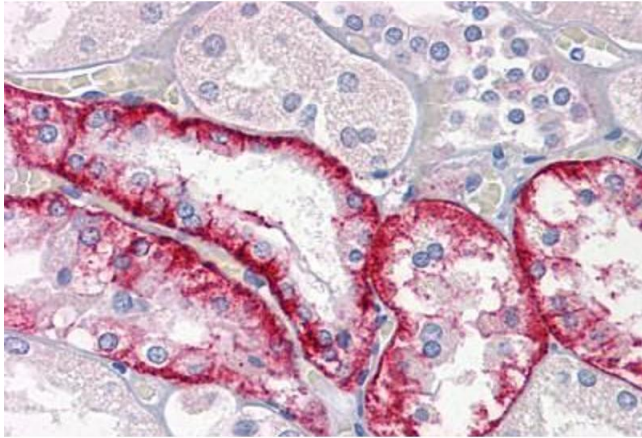
Alternative Name:	CTSK / Cathepsin K (CTSK Products)
Background:	Name/Gene ID: CTSK Subfamily: Cysteine C1 Family: Protease Synonyms: CTSK, Cathepsin K, Cathepsin K (pseudodysostosis), Cathepsin O1, Cathepsin O2, Cathepsin X, CTSO2, PKND, Procathepsin K, PYCD, Cathepsin O, CTSO2, CTSO1
Gene ID:	1513
UniProt:	P43235
Pathways:	Activation of Innate immune Response , Toll-Like Receptors Cascades

Application Details

Application Notes:	Approved: ELISA, IHC, IHC-P (5 µg/mL), WB (1:500 - 1:1000) Usage: Western Blot (Transfected lysate) - positive control transfected 293T cell line. Sandwich ELISA (Recombinant protein).
Comment:	Target Species of Antibody: Human
Restrictions:	For Research Use only

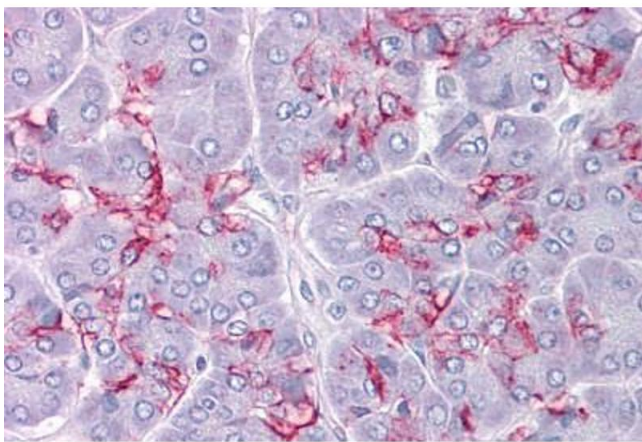
Handling

Format:	Liquid
Concentration:	Lot specific
Buffer:	PBS, pH 7.4. Sourced in Ascites.
Handling Advice:	Aliquot to Avoid freeze/thaw cycles.
Storage:	-20 °C
Storage Comment:	Store at -20°C. Aliquot to avoid freeze/thaw cycles.



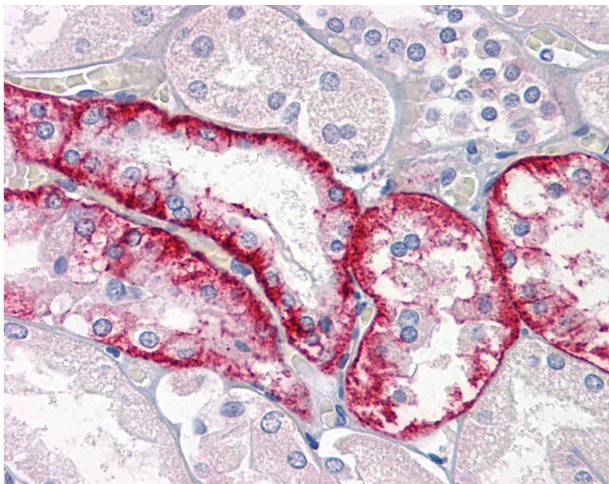
Immunohistochemistry (Formalin-fixed Paraffin-embedded Sections)

Image 1. Human Kidney: Formalin-Fixed, Paraffin-Embedded (FFPE)



Immunohistochemistry (Formalin-fixed Paraffin-embedded Sections)

Image 2. Human Pancreas: Formalin-Fixed, Paraffin-Embedded (FFPE)



Immunohistochemistry

Image 3. Anti-CTSK / Cathepsin K antibody IHC of human kidney. Immunohistochemistry of formalin-fixed, paraffin-embedded tissue after heat-induced antigen retrieval. Antibody concentration 5 ug/ml.