

Datasheet for ABIN574234
anti-CUX1 antibody (AA 521-621)



[Go to Product page](#)

3 Images

Overview

Quantity:	50 µg
Target:	CUX1
Binding Specificity:	AA 521-621
Reactivity:	Human
Host:	Mouse
Clonality:	Monoclonal
Conjugate:	This CUX1 antibody is un-conjugated
Application:	Western Blotting (WB), ELISA, Immunofluorescence (IF), Immunohistochemistry (IHC), Immunohistochemistry (Paraffin-embedded Sections) (IHC (p))

Product Details

Brand:	IHC-plus™
Immunogen:	CUTL1 (AAH25422, 521 a.a. ~ 621 a.a) partial recombinant protein with GST tag. MW of the GST tag alone is 26 KDa. Type of Immunogen: Recombinant protein
Clone:	2A10
Isotype:	IgG1 kappa
Purification:	Purified from ascites by Protein A

Target Details

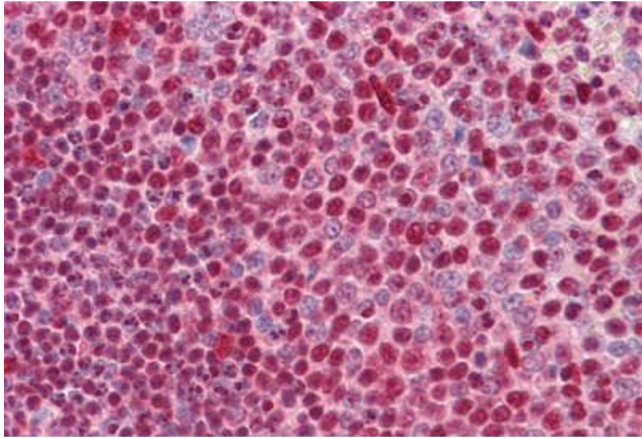
Target:	CUX1
Alternative Name:	CUX1 / CASP (CUX1 Products)
Background:	Name/Gene ID: CUX1 Synonyms: CUX1, CASP, CDP1, Clox, COY1, CUTL1, CCAAT displacement protein, Cut homolog, CUX, CUT, GOLIM6, Homeobox protein cux-1, p100, p200, p75, Protein CASP, CDP, Cut-like homeobox 1, Nbla10317, p110
Gene ID:	1523
UniProt:	Q13948
Pathways:	Cellular Glucan Metabolic Process

Application Details

Application Notes:	Approved: ELISA, IF (10 µg/mL), IHC, IHC-P (5 µg/mL), WB Usage: Immunofluorescence (10 µg/mL) - positive control HeLa cells. Sandwich ELISA (Recombinant protein).
Comment:	Target Species of Antibody: Human
Restrictions:	For Research Use only

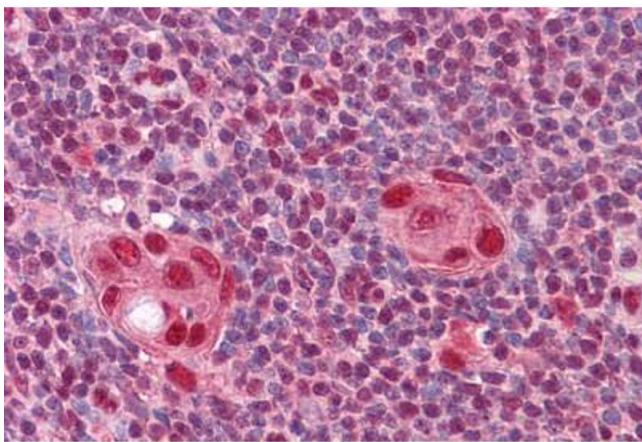
Handling

Format:	Liquid
Concentration:	Lot specific
Buffer:	PBS, pH 7.4. Sourced in Ascites.
Handling Advice:	Aliquot to Avoid freeze/thaw cycles.
Storage:	-20 °C
Storage Comment:	Store at -20°C. Aliquot to avoid freeze/thaw cycles.



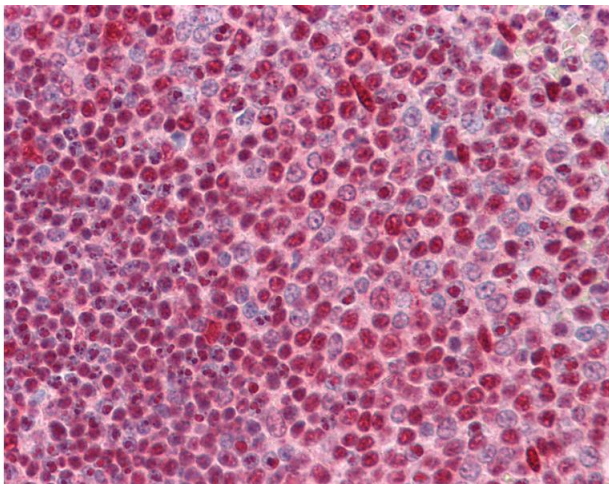
Immunohistochemistry (Formalin-fixed Paraffin-embedded Sections)

Image 1. Human Spleen: Formalin-Fixed, Paraffin-Embedded (FFPE)



Immunohistochemistry (Formalin-fixed Paraffin-embedded Sections)

Image 2. Human Thymus: Formalin-Fixed, Paraffin-Embedded (FFPE)



Immunohistochemistry

Image 3. Anti-CUX1 / CUTL1 antibody IHC of human spleen. Immunohistochemistry of formalin-fixed, paraffin-embedded tissue after heat-induced antigen retrieval. Antibody concentration 5 ug/ml.