



[Go to Product page](#)

Datasheet for ABIN574242
anti-EMX2 antibody (AA 103-201)

3 Images

Overview

Quantity:	50 µg
Target:	EMX2
Binding Specificity:	AA 103-201
Reactivity:	Human
Host:	Mouse
Clonality:	Monoclonal
Conjugate:	This EMX2 antibody is un-conjugated
Application:	ELISA, Immunohistochemistry (IHC), Immunohistochemistry (Paraffin-embedded Sections) (IHC (p))

Product Details

Brand:	IHC-plus™
Immunogen:	EMX2 (NP_004089, 103 a.a. ~ 201 a.a) partial recombinant protein with GST tag. MW of the GST tag alone is 26 KDa. Type of Immunogen: Recombinant protein
Clone:	4F7
Isotype:	IgG2b kappa
Purification:	Purified from ascites by Protein A

Target Details

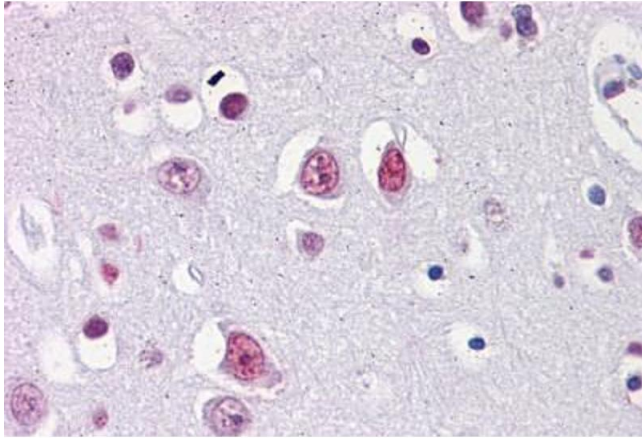
Target:	EMX2
Alternative Name:	EMX2 (EMX2 Products)
Background:	Name/Gene ID: EMX2 Synonyms: EMX2, Empty spiracles homeobox 2, Empty spiracles-like protein 2, Homeobox protein EMX2, Empty spiracles homolog 2
Gene ID:	2018
NCBI Accession:	NP_004089
UniProt:	Q04743

Application Details

Application Notes:	Approved: ELISA, IHC, IHC-P (5 µg/mL)
Comment:	Target Species of Antibody: Human
Restrictions:	For Research Use only

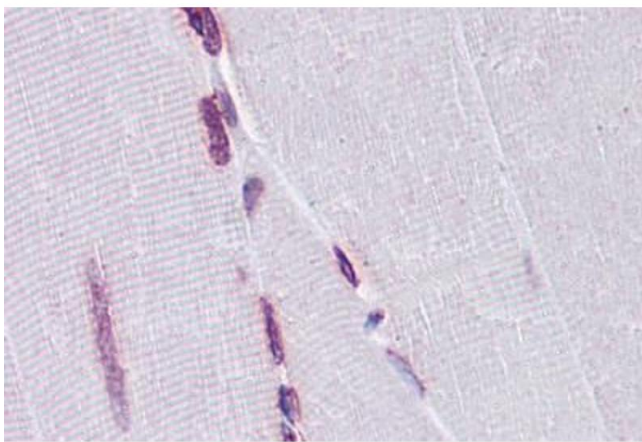
Handling

Format:	Liquid
Concentration:	Lot specific
Buffer:	PBS, pH 7.4.
Handling Advice:	Aliquot to Avoid freeze/thaw cycles.
Storage:	-20 °C
Storage Comment:	Store at -20°C. Aliquot to avoid freeze/thaw cycles.



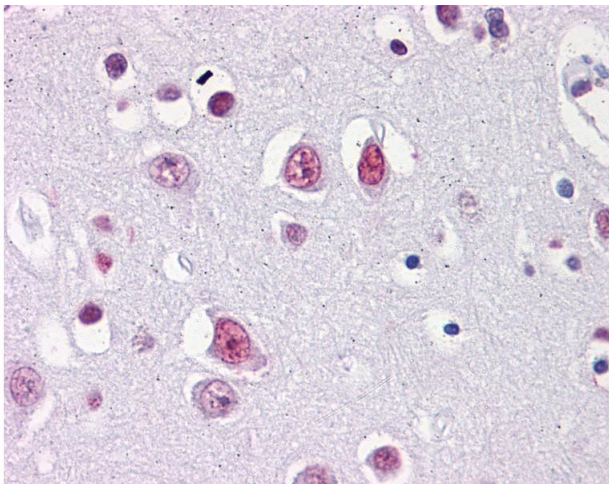
Immunohistochemistry (Formalin-fixed Paraffin-embedded Sections)

Image 1. Human Brain, cortex: Formalin-Fixed, Paraffin-Embedded (FFPE)



Immunohistochemistry (Formalin-fixed Paraffin-embedded Sections)

Image 2. Human Skeletal muscle: Formalin-Fixed, Paraffin-Embedded (FFPE)



Immunohistochemistry

Image 3. Anti-EMX2 antibody IHC of human brain, cortex. Immunohistochemistry of formalin-fixed, paraffin-embedded tissue after heat-induced antigen retrieval. Antibody concentration 5 ug/ml.