



[Go to Product page](#)

Datasheet for ABIN574245
anti-GBP1 antibody (AA 1-593)

4 Images

Overview

Quantity:	50 µg
Target:	GBP1
Binding Specificity:	AA 1-593
Reactivity:	Human
Host:	Mouse
Clonality:	Monoclonal
Conjugate:	This GBP1 antibody is un-conjugated
Application:	Western Blotting (WB), ELISA, Immunohistochemistry (IHC), Immunohistochemistry (Paraffin-embedded Sections) (IHC (p))

Product Details

Brand:	IHC-plus™
Immunogen:	GBP1 (AAH02666, 1 a.a. ~ 593 a.a) full length recombinant protein with GST tag. MW of the GST tag alone is 26 KDa. Type of Immunogen: Recombinant protein
Clone:	4D10
Isotype:	IgG2a kappa
Purification:	Purified from ascites by Protein A

Target Details

Target: GBP1

Alternative Name: GBP1 ([GBP1 Products](#))

Background: Name/Gene ID: GBP1

Synonyms: GBP1, GBP-1, GTP-binding protein 1, Guanylate binding protein 1, HuGBP-1

Gene ID: 2633

UniProt: [P32455](#)

Pathways: [Cellular Response to Molecule of Bacterial Origin](#)

Application Details

Application Notes: Approved: ELISA, IHC, IHC-P (5 µg/mL), WB

Comment: Target Species of Antibody: Human

Restrictions: For Research Use only

Handling

Format: Liquid

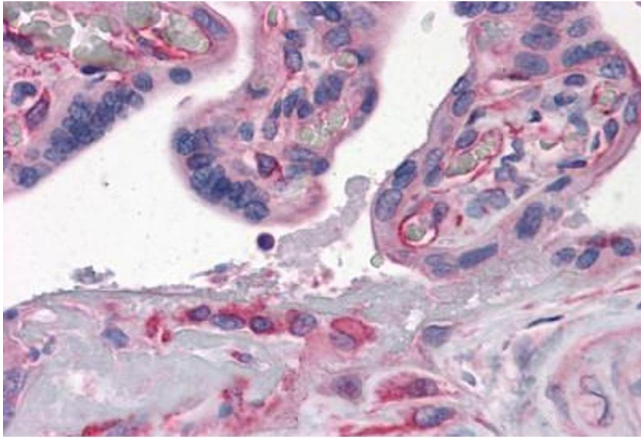
Concentration: Lot specific

Buffer: PBS, pH 7.4. Sourced in Ascites.

Handling Advice: Aliquot to Avoid freeze/thaw cycles.

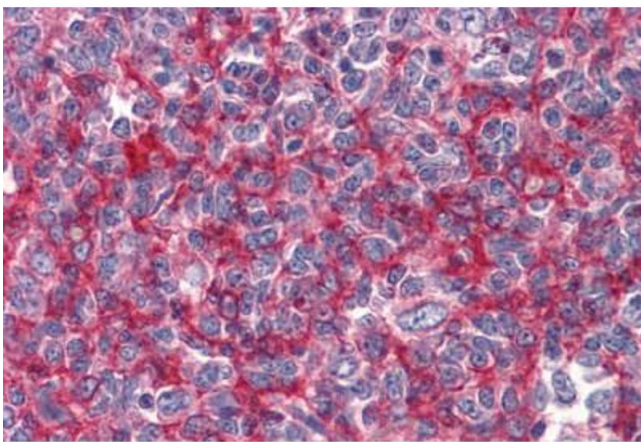
Storage: -20 °C

Storage Comment: Store at -20°C. Aliquot to avoid freeze/thaw cycles.



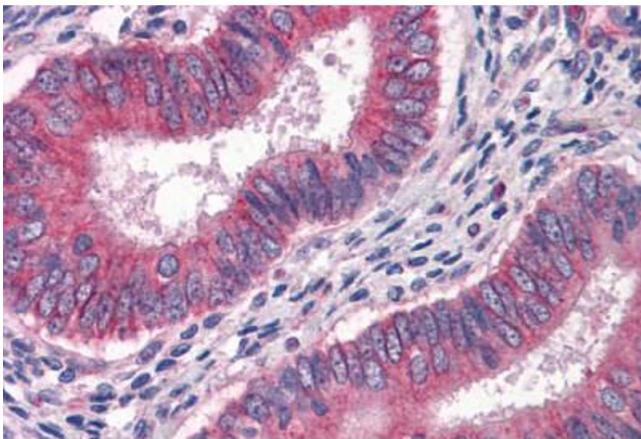
Immunohistochemistry (Formalin-fixed Paraffin-embedded Sections)

Image 1. Human Placenta: Formalin-Fixed, Paraffin-Embedded (FFPE)



Immunohistochemistry (Formalin-fixed Paraffin-embedded Sections)

Image 2. Human Tonsil: Formalin-Fixed, Paraffin-Embedded (FFPE)



Immunohistochemistry (Formalin-fixed Paraffin-embedded Sections)

Image 3. Human Uterus: Formalin-Fixed, Paraffin-Embedded (FFPE)

Please check the [product details page](#) for more images. Overall 4 images are available for ABIN574245.