



[Go to Product page](#)

Datasheet for ABIN574279

anti-HMGB2 antibody (AA 1-196)

2 Images

Overview

Quantity:	50 µg
Target:	HMGB2
Binding Specificity:	AA 1-196
Reactivity:	Human
Host:	Mouse
Clonality:	Monoclonal
Conjugate:	This HMGB2 antibody is un-conjugated
Application:	Western Blotting (WB), ELISA, Immunohistochemistry (IHC), Immunohistochemistry (Paraffin-embedded Sections) (IHC (p))

Product Details

Brand:	IHC-plus™
Immunogen:	HMGB2 (AAH00903, 1 a.a. ~ 196 a.a) full length recombinant protein with GST tag. MW of the GST tag alone is 26 KDa. Type of Immunogen: Recombinant protein
Clone:	3C7
Isotype:	IgG1 kappa
Purification:	Purified from ascites by Protein A

Target Details

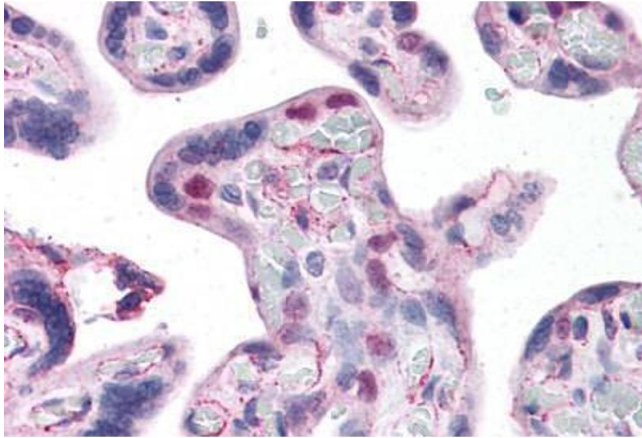
Target:	HMGB2
Alternative Name:	HMG2 / HMGB2 (HMGB2 Products)
Background:	Name/Gene ID: HMGB2 Synonyms: HMGB2, HMG-2, High mobility group box 2, High-mobility group box 2, HMG2, High mobility group protein 2, High mobility group protein B2
Gene ID:	3148
UniProt:	P26583
Pathways:	Cellular Response to Molecule of Bacterial Origin

Application Details

Application Notes:	Approved: ELISA, IHC, IHC-P (10 µg/mL), WB Usage: Western Blot (Cell lysate) - positive control Hela NE. Western Blot (Transfected lysate) - positive control transfected 293T cell line. Sandwich ELISA (Recombinant protein).
Comment:	Target Species of Antibody: Human
Restrictions:	For Research Use only

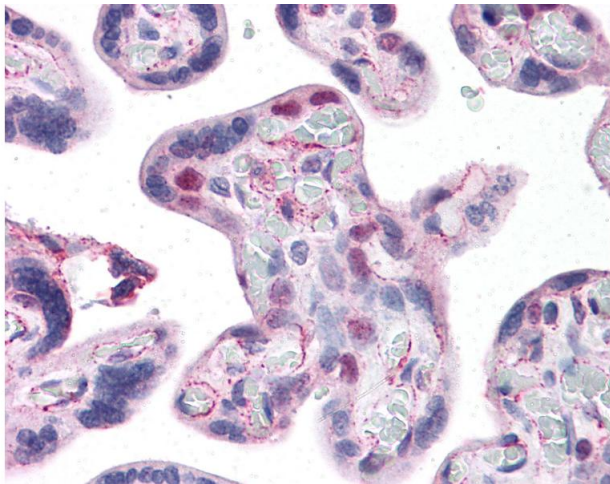
Handling

Format:	Liquid
Concentration:	Lot specific
Buffer:	PBS, pH 7.4
Handling Advice:	Aliquot to Avoid freeze/thaw cycles.
Storage:	-20 °C
Storage Comment:	Store at -20°C. Aliquot to avoid freeze/thaw cycles.



Immunohistochemistry (Formalin-fixed Paraffin-embedded Sections)

Image 1. Human Placenta: Formalin-Fixed, Paraffin-Embedded (FFPE)



Immunohistochemistry

Image 2. Anti-HMGB2 antibody IHC of human placenta. Immunohistochemistry of formalin-fixed, paraffin-embedded tissue after heat-induced antigen retrieval. Antibody concentration 10 ug/ml.