



[Go to Product page](#)

Datasheet for ABIN574284
anti-IDO1 antibody (AA 1-404)

2 Images

Overview

Quantity:	50 µg
Target:	IDO1
Binding Specificity:	AA 1-404
Reactivity:	Human
Host:	Mouse
Clonality:	Monoclonal
Application:	Western Blotting (WB), ELISA, Immunohistochemistry (IHC), Immunohistochemistry (Paraffin-embedded Sections) (IHC (p))

Product Details

Brand:	IHC-plus™
Immunogen:	INDO (AAH27882, 1 a.a. ~ 404 a.a) full length recombinant protein with GST tag. MW of the GST tag alone is 26 KDa. Type of Immunogen: Recombinant protein
Clone:	4D2
Isotype:	IgG2b kappa
Purification:	Purified from ascites by Protein A

Target Details

Target:	IDO1
---------	------

Target Details

Alternative Name: IDO1 / IDO ([IDO1 Products](#))

Background: Name/Gene ID: IDO1

Synonyms: IDO1, IDO, Indole 2,3-dioxygenase, Indolamine 2,3 dioxygenase, IDO-1, INDO, Indoleamine 2,3-dioxygenase, Indoleamine 2,3-dioxygenase 1

Gene ID: 3620

UniProt: [P14902](#)

Pathways: [Activated T Cell Proliferation](#)

Application Details

Application Notes: Approved: ELISA, IHC, IHC-P (5 µg/mL), WB (1:500 - 1:1000)

Usage: Western Blot (Cell lysate) - positive control HeLa.

Comment: Target Species of Antibody: Human

Restrictions: For Research Use only

Handling

Format: Liquid

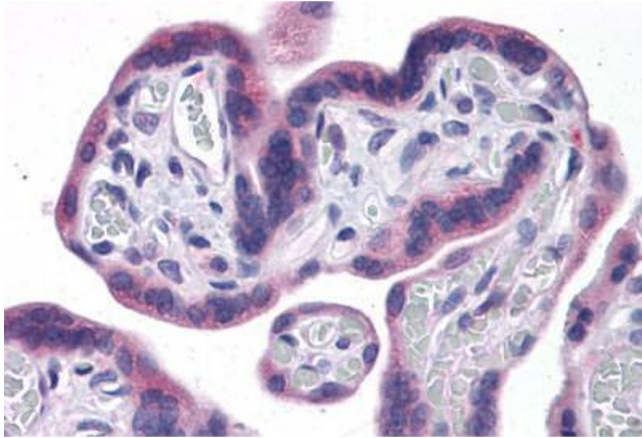
Concentration: Lot specific

Buffer: PBS, pH 7.4. Sourced in Ascites.

Handling Advice: Aliquot to Avoid freeze/thaw cycles.

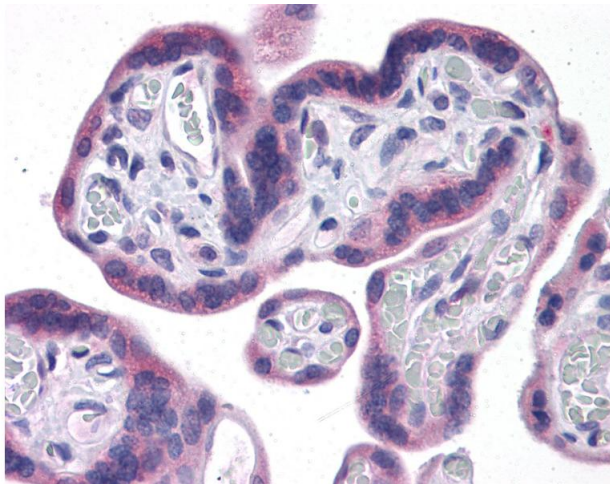
Storage: -20 °C

Storage Comment: Store at -20°C. Aliquot to avoid freeze/thaw cycles.



Immunohistochemistry (Formalin-fixed Paraffin-embedded Sections)

Image 1. Human Placenta: Formalin-Fixed, Paraffin-Embedded (FFPE)



Immunohistochemistry

Image 2. Anti-IDO1 / IDO antibody IHC of human placenta. Immunohistochemistry of formalin-fixed, paraffin-embedded tissue after heat-induced antigen retrieval. Antibody concentration 5 ug/ml.