



Datasheet for ABIN574324  
**anti-PTBP1 antibody (AA 45-145)**



[Go to Product page](#)

3 Images

Overview

Quantity:	50 µg
Target:	PTBP1
Binding Specificity:	AA 45-145
Reactivity:	Human
Host:	Mouse
Clonality:	Monoclonal
Conjugate:	This PTBP1 antibody is un-conjugated
Application:	Western Blotting (WB), ELISA, Immunohistochemistry (IHC), Immunofluorescence (IF), Immunohistochemistry (Paraffin-embedded Sections) (IHC (p))

Product Details

Brand:	IHC-plus™
Immunogen:	PTBP1 (NP_002810, 45 a.a. ~ 145 a.a) partial recombinant protein with GST tag. MW of the GST tag alone is 26 KDa.  Type of Immunogen: Recombinant protein
Clone:	3H8
Isotype:	IgG1 kappa
Purification:	Purified from ascites by Protein A

## Target Details

---

Target:	PTBP1
Alternative Name:	PTBP1 ( <a href="#">PTBP1 Products</a> )
Background:	Name/Gene ID: PTBP1  Synonyms: PTBP1, HnRNP I, HNRNPI, HNRPI, PTB, PPTB, PTB2, PTB4, RNA-binding protein, HNRNP-I, PTB-1, PTB-T, PTB3
Gene ID:	5725
NCBI Accession:	<a href="#">NP_002810</a>
UniProt:	<a href="#">P26599</a>
Pathways:	<a href="#">Regulation of Muscle Cell Differentiation</a>

## Application Details

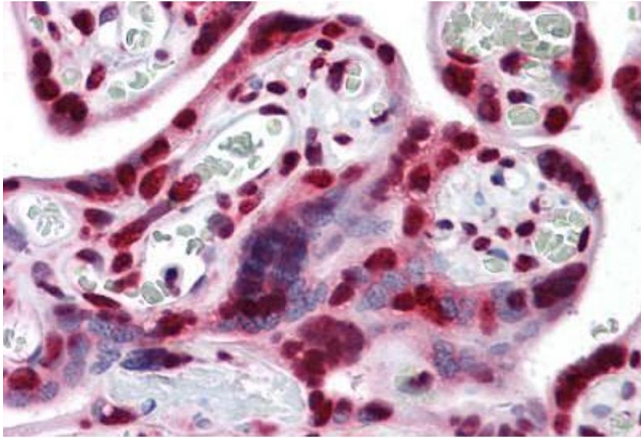
---

Application Notes:	Approved: ELISA, IF (10 µg/mL), IHC, IHC-P (5 µg/mL), WB  Usage: Western Blot (Cell lysate) - positive control A-431. Western Blot (Transfected lysate) - positive control transfected 293T cell line. Immunofluorescence (10 µg/mL) - positive control HeLa cells. Sandwich ELISA (Recombinant protein).
Comment:	Target Species of Antibody: Human
Restrictions:	For Research Use only

## Handling

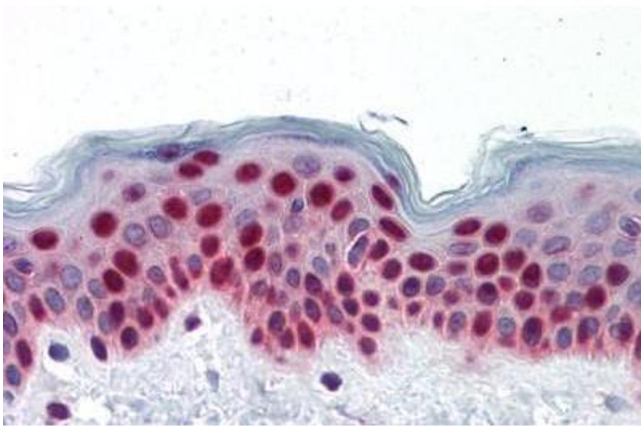
---

Format:	Liquid
Concentration:	Lot specific
Buffer:	PBS, pH 7.4. Sourced in Ascites.
Handling Advice:	Aliquot to Avoid freeze/thaw cycles.
Storage:	-20 °C
Storage Comment:	Store at -20°C. Aliquot to avoid freeze/thaw cycles.



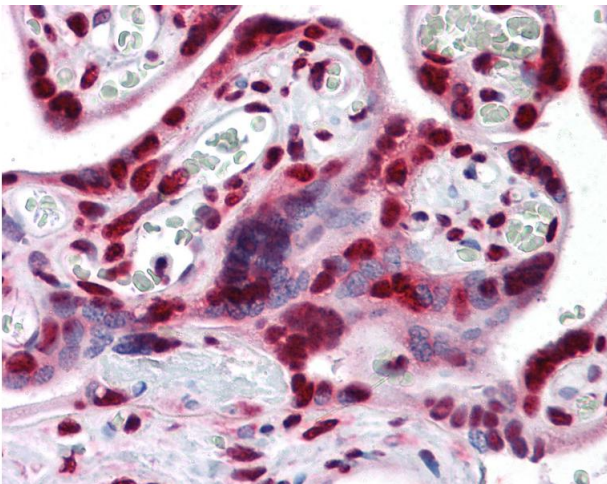
### Immunohistochemistry (Formalin-fixed Paraffin-embedded Sections)

**Image 1.** Human Placenta: Formalin-Fixed, Paraffin-Embedded (FFPE)



### Immunohistochemistry (Formalin-fixed Paraffin-embedded Sections)

**Image 2.** Human Skin: Formalin-Fixed, Paraffin-Embedded (FFPE)



### Immunohistochemistry

**Image 3.** Anti-PTBP1 antibody IHC of human placenta. Immunohistochemistry of formalin-fixed, paraffin-embedded tissue after heat-induced antigen retrieval. Antibody concentration 5 ug/ml.