

Datasheet for ABIN574329
anti-RPS2 antibody (AA 198-294)



[Go to Product page](#)

4 Images

Overview

Quantity:	50 µg
Target:	RPS2
Binding Specificity:	AA 198-294
Reactivity:	Human
Host:	Mouse
Clonality:	Monoclonal
Conjugate:	This RPS2 antibody is un-conjugated
Application:	Western Blotting (WB), ELISA, Immunohistochemistry (IHC), Immunohistochemistry (Paraffin-embedded Sections) (IHC (p))

Product Details

Brand:	IHC-plus™
Immunogen:	RPS2 (NP_002943, 198 a.a. ~ 294 a.a) partial recombinant protein with GST tag. MW of the GST tag alone is 26 KDa. Type of Immunogen: Recombinant protein
Clone:	3G6
Isotype:	IgG2a kappa
Purification:	Purified from ascites by Protein A

Target Details

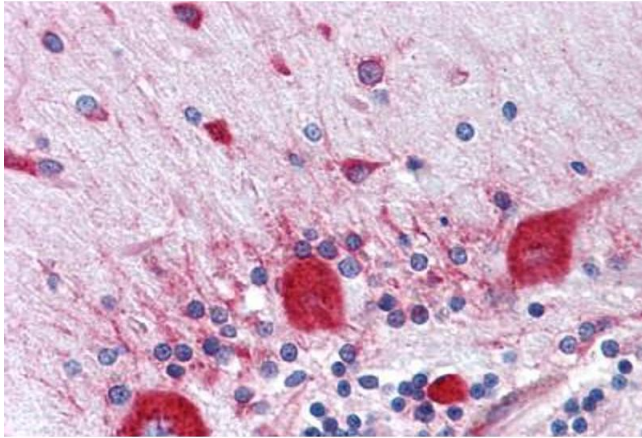
Target:	RPS2
Alternative Name:	RPS2 (RPS2 Products)
Background:	Name/Gene ID: RPS2 Synonyms: RPS2, 40S ribosomal protein S4, 40S ribosomal protein S2, LLREP3, OK/KNS-cl.6, Ribosomal protein S2, S2, RPS4, Protein LLRep3
Gene ID:	6187
NCBI Accession:	NP_002943
UniProt:	P15880
Pathways:	Ribonucleoprotein Complex Subunit Organization , Ribosome Assembly

Application Details

Application Notes:	Approved: ELISA, IHC, IHC-P (5 µg/mL), WB Usage: Western blot performed with the recombinant protein used as the immunogen. Sandwich ELISA (Recombinant protein).
Comment:	Target Species of Antibody: Human
Restrictions:	For Research Use only

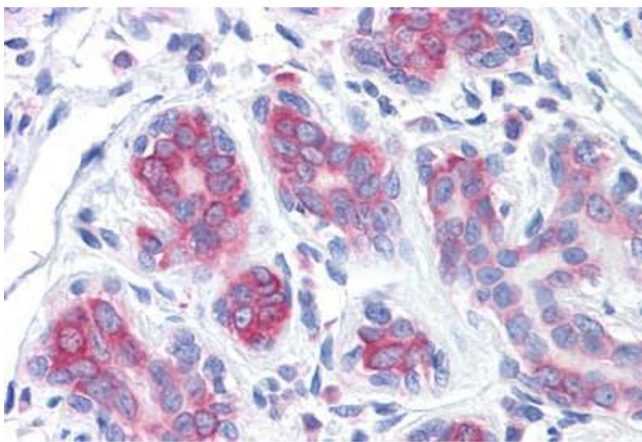
Handling

Format:	Liquid
Concentration:	Lot specific
Buffer:	PBS, pH 7.4
Handling Advice:	Aliquot to Avoid freeze/thaw cycles.
Storage:	-20 °C
Storage Comment:	Store at -20°C. Aliquot to avoid freeze/thaw cycles.



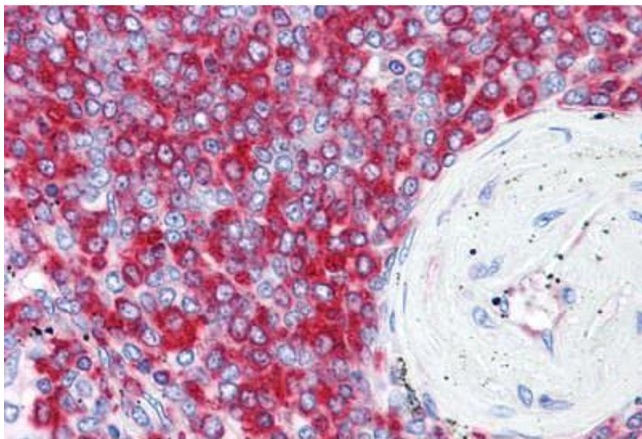
Immunohistochemistry (Formalin-fixed Paraffin-embedded Sections)

Image 1. Human Brain, Cerebellum: Formalin-Fixed, Paraffin-Embedded (FFPE)



Immunohistochemistry (Formalin-fixed Paraffin-embedded Sections)

Image 2. Human Breast: Formalin-Fixed, Paraffin-Embedded (FFPE)



Immunohistochemistry (Formalin-fixed Paraffin-embedded Sections)

Image 3. Human Spleen: Formalin-Fixed, Paraffin-Embedded (FFPE)

Please check the [product details page](#) for more images. Overall 4 images are available for ABIN574329.