



[Go to Product page](#)

Datasheet for ABIN574334

## anti-RRM2 antibody (AA 1-111)

### 3 Images

#### Overview

Quantity:	50 µg
Target:	RRM2
Binding Specificity:	AA 1-111
Reactivity:	Human
Host:	Mouse
Clonality:	Monoclonal
Conjugate:	This RRM2 antibody is un-conjugated
Application:	Western Blotting (WB), ELISA, Immunohistochemistry (IHC), Immunofluorescence (IF), Immunohistochemistry (Paraffin-embedded Sections) (IHC (p))

#### Product Details

Brand:	IHC-plus™
Immunogen:	RRM2 (NP_001025, 1 a.a. ~ 111 a.a) partial recombinant protein with GST tag. MW of the GST tag alone is 26 KDa.  Type of Immunogen: Recombinant protein
Clone:	1E1
Isotype:	IgG1 kappa
Purification:	Purified from ascites by Protein A

## Target Details

---

Target: RRM2

Alternative Name: RRM2 ([RRM2 Products](#))

Background: Name/Gene ID: RRM2

Synonyms: RRM2, Ribonucleotide reductase M2, RR2, RR2M

Gene ID: 6241

NCBI Accession: [NP\\_001025](#)

UniProt: [P31350](#)

Pathways: [Mitotic G1-G1/S Phases](#)

## Application Details

---

Application Notes: Approved: ELISA, IF (10 µg/mL), IHC, IHC-P (5 µg/mL), WB

Usage: Western Blot (Cell lysate) - positive control HepG2. Immunofluorescence (10 µg/mL) - positive control HeLa cells. Sandwich ELISA (Recombinant protein).

Comment: Target Species of Antibody: Human

Restrictions: For Research Use only

## Handling

---

Format: Liquid

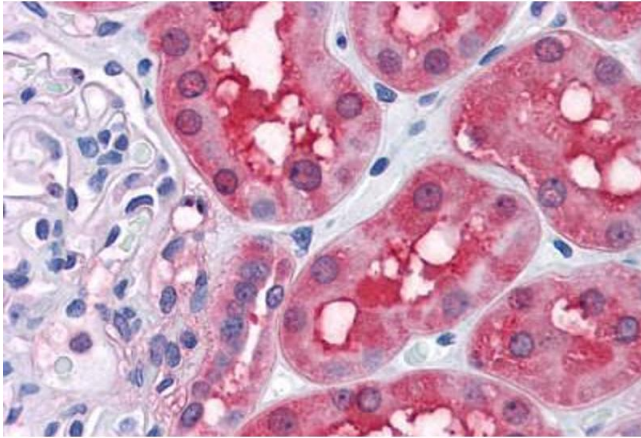
Concentration: Lot specific

Buffer: PBS, pH 7.4. Sourced in Ascites.

Handling Advice: Aliquot to Avoid freeze/thaw cycles.

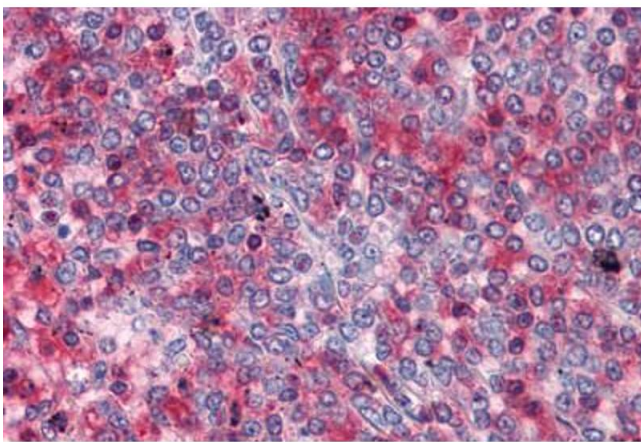
Storage: -20 °C

Storage Comment: Store at -20°C. Aliquot to avoid freeze/thaw cycles.



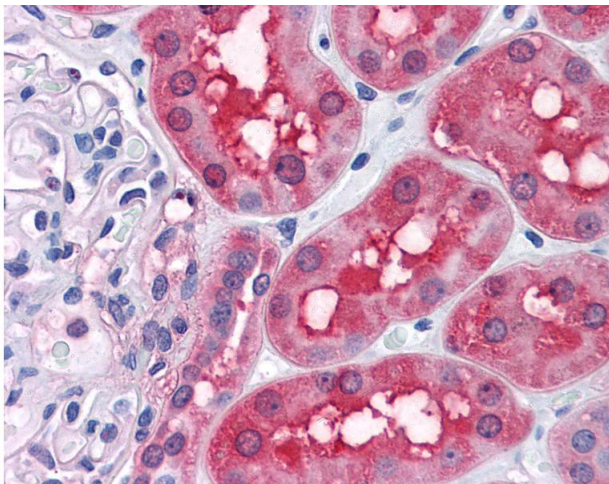
### Immunohistochemistry (Formalin-fixed Paraffin-embedded Sections)

**Image 1.** Human Kidney: Formalin-Fixed, Paraffin-Embedded (FFPE)



### Immunohistochemistry (Formalin-fixed Paraffin-embedded Sections)

**Image 2.** Human Spleen: Formalin-Fixed, Paraffin-Embedded (FFPE)



### Immunohistochemistry

**Image 3.** Anti-RRM2 antibody IHC of human kidney. Immunohistochemistry of formalin-fixed, paraffin-embedded tissue after heat-induced antigen retrieval. Antibody concentration 5 ug/ml.