

Datasheet for ABIN574351  
**anti-ADAM17 antibody (AA 215-315)**



[Go to Product page](#)

3 Images

## Overview

Quantity:	50 µg
Target:	ADAM17
Binding Specificity:	AA 215-315
Reactivity:	Human
Host:	Mouse
Clonality:	Monoclonal
Conjugate:	This ADAM17 antibody is un-conjugated
Application:	Western Blotting (WB), ELISA, Immunohistochemistry (IHC), Immunohistochemistry (Paraffin-embedded Sections) (IHC (p)), Proximity Ligation Assay (PLA)

## Product Details

Brand:	IHC-plus™
Immunogen:	ADAM17 (NP_003174, 215 a.a. ~ 315 a.a) partial recombinant protein with GST tag. MW of the GST tag alone is 26 KDa.  Type of Immunogen: Recombinant protein
Clone:	1F6
Isotype:	IgG2b kappa
Purification:	Purified from ascites by Protein A

## Target Details

---

Target:	ADAM17
Alternative Name:	ADAM17 / TACE ( <a href="#">ADAM17 Products</a> )
Background:	Name/Gene ID: ADAM17 Subfamily: Metallopeptidase M12B Family: Protease  Synonyms: ADAM17, CD156B, CD156b antigen, CSVP, ADAM 17, NISBD, TNF-alpha converting enzyme, TNF-alpha convertase, TNF-alpha-converting enzyme, Snake venom-like protease, TACE
Gene ID:	6868
NCBI Accession:	<a href="#">NP_003174</a>
UniProt:	<a href="#">P78536</a>
Pathways:	<a href="#">Notch Signaling</a> , <a href="#">EGFR Signaling Pathway</a> , <a href="#">Neurotrophin Signaling Pathway</a> , <a href="#">Response to Growth Hormone Stimulus</a>

## Application Details

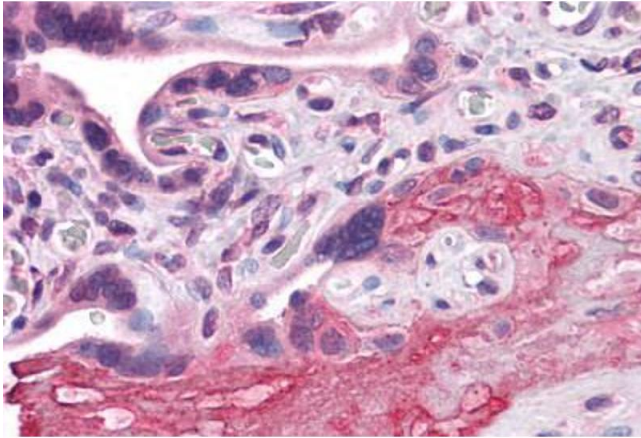
---

Application Notes:	Approved: ELISA, IHC, IHC-P (5 µg/mL), PLA, WB (1:500 - 1:1000)  Usage: Western blot performed with the recombinant protein used as the immunogen. In situ Proximity Ligation Assay (Cell).
Comment:	Target Species of Antibody: Human
Restrictions:	For Research Use only

## Handling

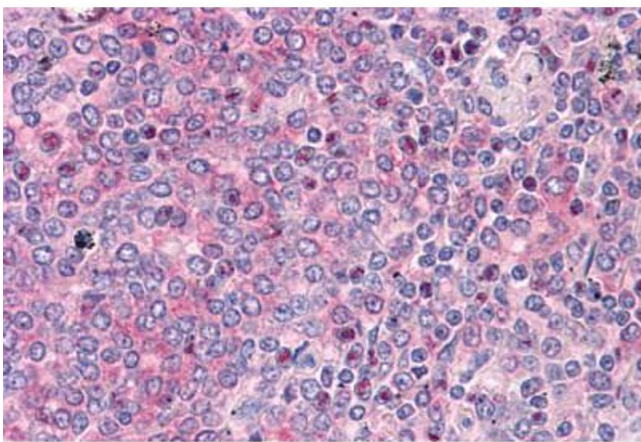
---

Format:	Liquid
Concentration:	Lot specific
Buffer:	PBS, pH 7.4. Sourced in Ascites.
Handling Advice:	Aliquot to Avoid freeze/thaw cycles.
Storage:	-20 °C
Storage Comment:	Store at -20°C. Aliquot to avoid freeze/thaw cycles.



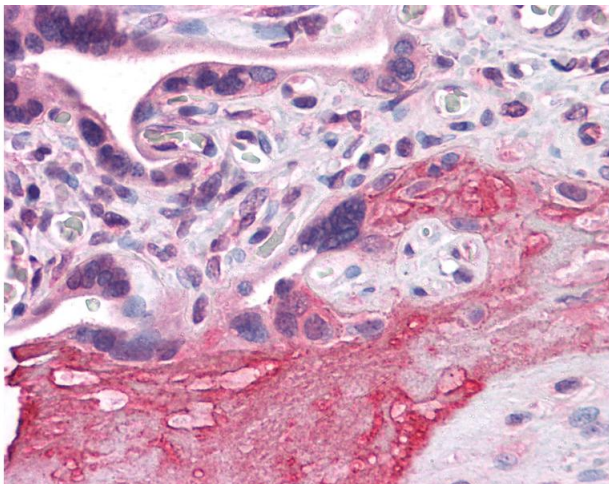
**Immunohistochemistry (Formalin-fixed Paraffin-embedded Sections)**

**Image 1.** Human Placenta: Formalin-Fixed, Paraffin-Embedded (FFPE)



**Immunohistochemistry (Formalin-fixed Paraffin-embedded Sections)**

**Image 2.** Human Spleen: Formalin-Fixed, Paraffin-Embedded (FFPE)



**Immunohistochemistry**

**Image 3.** Anti-ADAM17 antibody IHC of human placenta. Immunohistochemistry of formalin-fixed, paraffin-embedded tissue after heat-induced antigen retrieval. Antibody concentration 5 ug/ml.