



[Go to Product page](#)

Datasheet for ABIN574360
anti-TTC1 antibody (AA 193-293)

4 Images

Overview

Quantity:	50 µg
Target:	TTC1
Binding Specificity:	AA 193-293
Reactivity:	Human
Host:	Mouse
Clonality:	Monoclonal
Conjugate:	This TTC1 antibody is un-conjugated
Application:	Western Blotting (WB), ELISA, Immunohistochemistry (IHC), Immunohistochemistry (Paraffin-embedded Sections) (IHC (p))

Product Details

Brand:	IHC-plus™
Immunogen:	TTC1 (NP_003305, 193 a.a. ~ 293 a.a) partial recombinant protein with GST tag. MW of the GST tag alone is 26 KDa. Type of Immunogen: Recombinant protein
Clone:	4E3
Isotype:	IgG2b kappa
Purification:	Purified from ascites by Protein A

Target Details

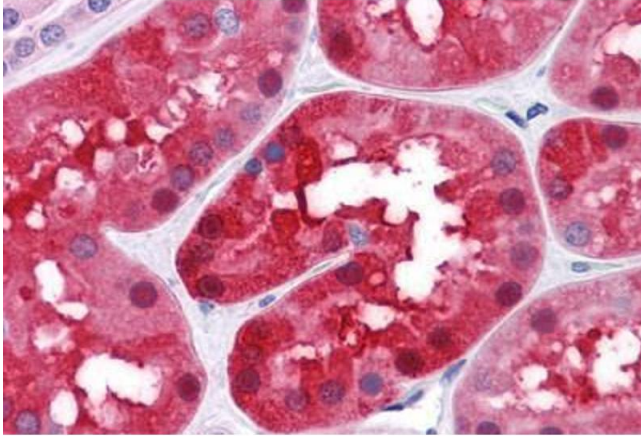
Target:	TTC1
Alternative Name:	TTC1 (TTC1 Products)
Background:	Name/Gene ID: TTC1 Synonyms: TTC1, TPR1, TPR repeat protein 1
Gene ID:	7265
NCBI Accession:	NP_003305
UniProt:	Q99614

Application Details

Application Notes:	Approved: ELISA, IHC, IHC-P (5 µg/mL), WB Usage: Western blot performed with the recombinant protein used as the immunogen.
Comment:	Target Species of Antibody: Human
Restrictions:	For Research Use only

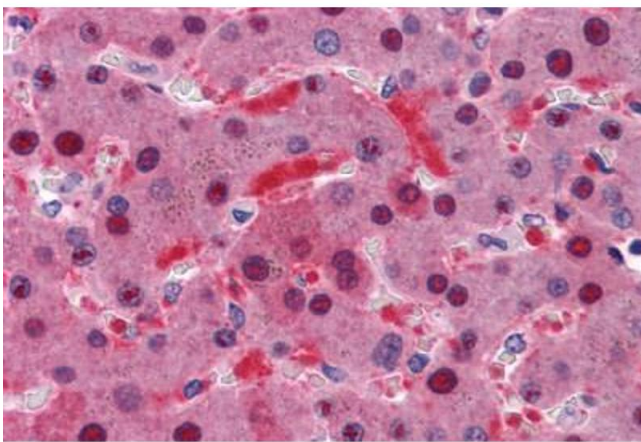
Handling

Format:	Liquid
Concentration:	Lot specific
Buffer:	PBS, pH 7.4
Handling Advice:	Aliquot to Avoid freeze/thaw cycles.
Storage:	-20 °C
Storage Comment:	Store at -20°C. Aliquot to avoid freeze/thaw cycles.



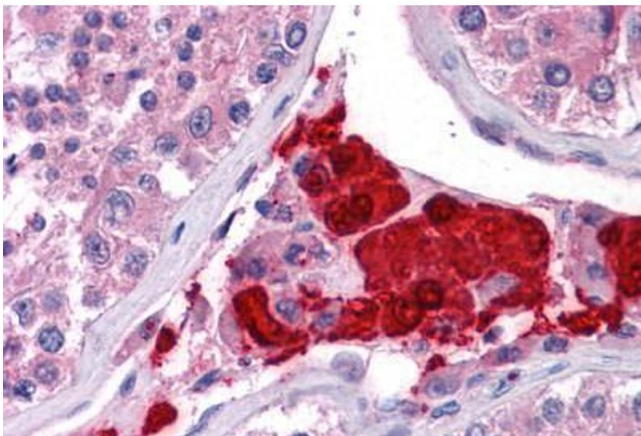
Immunohistochemistry (Formalin-fixed Paraffin-embedded Sections)

Image 1. Human Kidney: Formalin-Fixed, Paraffin-Embedded (FFPE)



Immunohistochemistry (Formalin-fixed Paraffin-embedded Sections)

Image 2. Human Liver: Formalin-Fixed, Paraffin-Embedded (FFPE)



Immunohistochemistry (Formalin-fixed Paraffin-embedded Sections)

Image 3. Human Testis: Formalin-Fixed, Paraffin-Embedded (FFPE)

Please check the [product details page](#) for more images. Overall 4 images are available for ABIN574360.