



[Go to Product page](#)

Datasheet for ABIN574390

anti-Splicing Factor 1 antibody (AA 1-111)

4 Images

Overview

Quantity:	50 µg
Target:	Splicing Factor 1 (SF1)
Binding Specificity:	AA 1-111
Reactivity:	Human
Host:	Mouse
Clonality:	Monoclonal
Conjugate:	This Splicing Factor 1 antibody is un-conjugated
Application:	Western Blotting (WB), ELISA, Immunohistochemistry (IHC), Immunofluorescence (IF), Immunohistochemistry (Paraffin-embedded Sections) (IHC (p))

Product Details

Brand:	IHC-plus™
Immunogen:	SF1 (NP_004621, 1 a.a. ~ 111 a.a) partial recombinant protein with GST tag. MW of the GST tag alone is 26 KDa. Type of Immunogen: Recombinant protein
Clone:	2E12
Isotype:	IgG2a kappa
Purification:	Purified from ascites by Protein A

Target Details

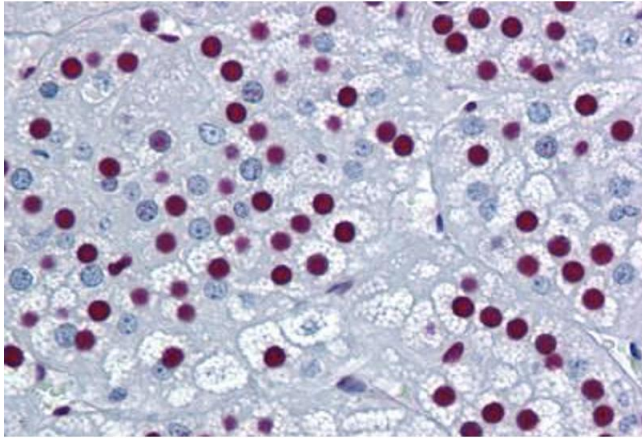
Target:	Splicing Factor 1 (SF1)
Alternative Name:	SF1 (SF1 Products)
Background:	Name/Gene ID: SF1 Synonyms: SF1, D11S636, MBBP, ZCCHC25, Transcription factor ZFM1, Zinc finger gene in MEN1 locus, Zinc finger protein 162, BBP, ZNF162, Splicing factor 1, ZFM1
Gene ID:	7536
NCBI Accession:	NP_004621
UniProt:	Q15637
Pathways:	Nuclear Receptor Transcription Pathway , Steroid Hormone Mediated Signaling Pathway , Ribonucleoprotein Complex Subunit Organization , Maintenance of Protein Location

Application Details

Application Notes:	Approved: ELISA, IF (10 µg/mL), IHC, IHC-P (5 µg/mL), WB Usage: Immunofluorescence (10 µg/mL) - positive control HeLa cells. Sandwich ELISA (Recombinant protein).
Comment:	Target Species of Antibody: Human
Restrictions:	For Research Use only

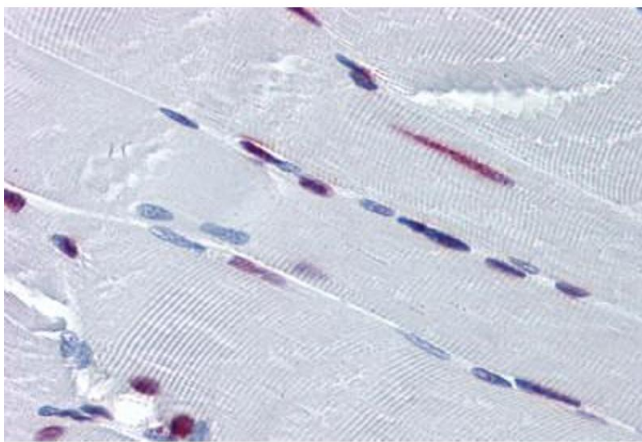
Handling

Format:	Liquid
Concentration:	Lot specific
Buffer:	PBS, pH 7.4.
Handling Advice:	Aliquot to Avoid freeze/thaw cycles.
Storage:	-20 °C
Storage Comment:	Store at -20°C. Aliquot to avoid freeze/thaw cycles.



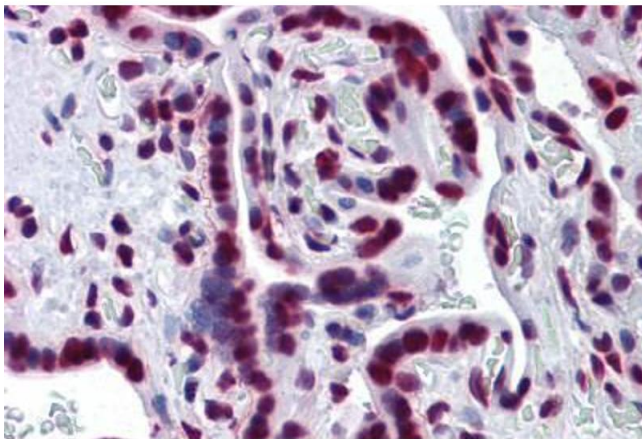
Immunohistochemistry (Formalin-fixed Paraffin-embedded Sections)

Image 1. Human Adrenal: Formalin-Fixed, Paraffin-Embedded (FFPE)



Immunohistochemistry (Formalin-fixed Paraffin-embedded Sections)

Image 2. Human Skeletal Muscle: Formalin-Fixed, Paraffin-Embedded (FFPE)



Immunohistochemistry (Formalin-fixed Paraffin-embedded Sections)

Image 3. Human Placenta: Formalin-Fixed, Paraffin-Embedded (FFPE)

Please check the [product details page](#) for more images. Overall 4 images are available for ABIN574390.