



[Go to Product page](#)

Datasheet for ABIN574393

## anti-BBOX1 antibody (AA 278-388)

### 2 Images

#### Overview

Quantity:	50 µg
Target:	BBOX1
Binding Specificity:	AA 278-388
Reactivity:	Human
Host:	Mouse
Clonality:	Monoclonal
Conjugate:	This BBOX1 antibody is un-conjugated
Application:	Western Blotting (WB), ELISA, Immunohistochemistry (IHC), Immunohistochemistry (Paraffin-embedded Sections) (IHC (p))

#### Product Details

Brand:	IHC-plus™
Immunogen:	BBOX1 (NP_003977, 278 a.a. ~ 388 a.a) partial recombinant protein with GST tag. MW of the GST tag alone is 26 KDa.  Type of Immunogen: Recombinant protein
Clone:	6H3
Isotype:	IgG1 kappa
Purification:	Purified from ascites by Protein A

## Target Details

---

Target:	BBOX1
Alternative Name:	BBOX1 / BBOX ( <a href="#">BBOX1 Products</a> )
Background:	Name/Gene ID: BBOX1  Synonyms: BBOX1, BBH, G-BBH, Gamma-BBH, BBOX
Gene ID:	8424
NCBI Accession:	<a href="#">NP_003977</a>
UniProt:	<a href="#">O75936</a>

## Application Details

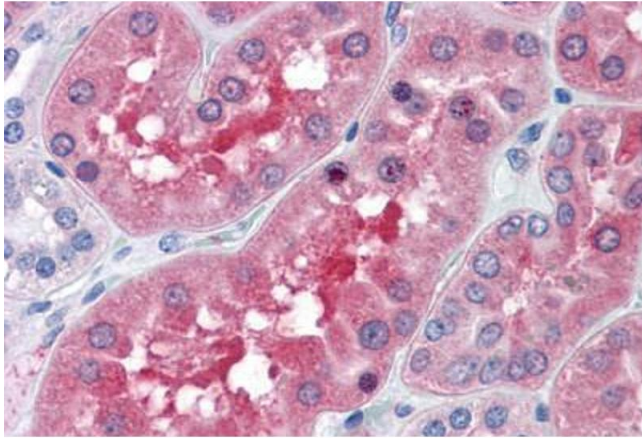
---

Application Notes:	Approved: ELISA, IHC, IHC-P (10 µg/mL), WB  Usage: Sandwich ELISA (Recombinant protein).
Comment:	Target Species of Antibody: Human
Restrictions:	For Research Use only

## Handling

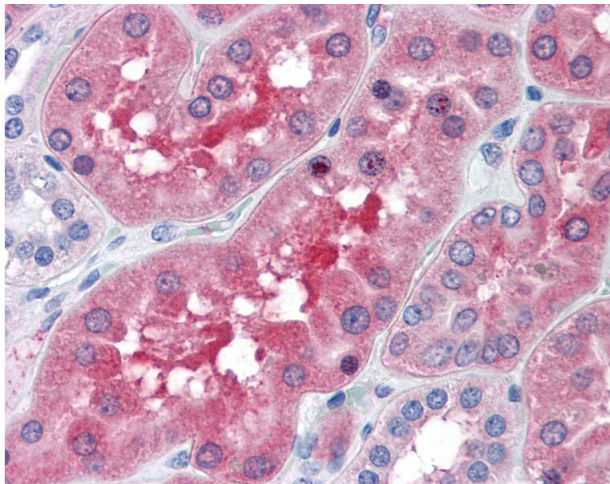
---

Format:	Liquid
Concentration:	Lot specific
Buffer:	PBS, pH 7.4
Handling Advice:	Aliquot to Avoid freeze/thaw cycles.
Storage:	-20 °C
Storage Comment:	Store at -20°C. Aliquot to avoid freeze/thaw cycles.



### Immunohistochemistry (Formalin-fixed Paraffin-embedded Sections)

**Image 1.** Human Kidney: Formalin-Fixed, Paraffin-Embedded (FFPE)



### Immunohistochemistry

**Image 2.** Anti-BBOX1 antibody IHC of human kidney. Immunohistochemistry of formalin-fixed, paraffin-embedded tissue after heat-induced antigen retrieval. Antibody concentration 10 ug/ml.