



[Go to Product page](#)

Datasheet for ABIN574405
anti-Claudin 1 antibody (AA 1-212)

4 Images

Overview

Quantity:	50 µg
Target:	Claudin 1 (CLDN1)
Binding Specificity:	AA 1-212
Reactivity:	Human
Host:	Mouse
Clonality:	Monoclonal
Application:	Western Blotting (WB), ELISA, Immunohistochemistry (IHC), Immunohistochemistry (Paraffin-embedded Sections) (IHC (p))

Product Details

Brand:	IHC-plus™
Immunogen:	CLDN1 (AAH12471, 1 a.a. ~ 212 a.a) full length recombinant protein with GST tag. MW of the GST tag alone is 26 KDa. Type of Immunogen: Recombinant protein
Clone:	1C5-D9
Isotype:	IgG2a kappa
Purification:	Purified from ascites by Protein A

Target Details

Target:	Claudin 1 (CLDN1)
---------	-------------------

Target Details

Alternative Name: CLDN1 / Claudin 1 ([CLDN1 Products](#))

Background: Name/Gene ID: CLDN1
Family: Claudin

Synonyms: CLDN1, Claudin-1, Claudin 1, ILVASC, SEMP1, CLD1

Gene ID: 9076

UniProt: [O95832](#)

Pathways: [Cell-Cell Junction Organization](#), [Hepatitis C](#)

Application Details

Application Notes: Approved: ELISA, IHC, IHC-P (5 µg/mL), WB

Usage: Western Blot (Cell lysate) - positive control PRC/PRF/5. Western Blot (Cell lysate) - positive control A-431. Western Blot (Transfected lysate) - positive control transfected 293T cell line. Sandwich ELISA (Recombinant protein).

Comment: Target Species of Antibody: Human

Restrictions: For Research Use only

Handling

Format: Liquid

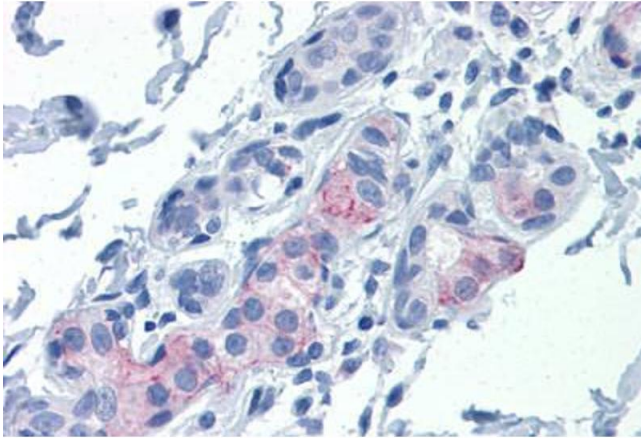
Concentration: Lot specific

Buffer: PBS, pH 7.4.

Handling Advice: Aliquot to Avoid freeze/thaw cycles.

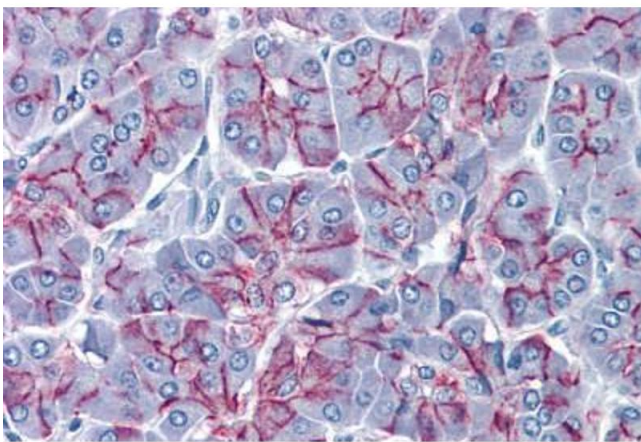
Storage: -20 °C

Storage Comment: Store at -20°C. Aliquot to avoid freeze/thaw cycles.



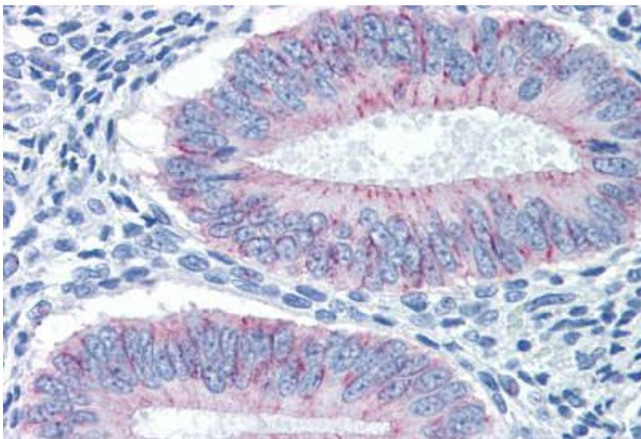
Immunohistochemistry (Formalin-fixed Paraffin-embedded Sections)

Image 1. Human Breast: Formalin-Fixed, Paraffin-Embedded (FFPE)



Immunohistochemistry (Formalin-fixed Paraffin-embedded Sections)

Image 2. Human Pancreas: Formalin-Fixed, Paraffin-Embedded (FFPE)



Immunohistochemistry (Formalin-fixed Paraffin-embedded Sections)

Image 3. Human Uterus: Formalin-Fixed, Paraffin-Embedded (FFPE)

Please check the [product details page](#) for more images. Overall 4 images are available for ABIN574405.