

Datasheet for ABIN574406
anti-FAM50A antibody (AA 1-89)



[Go to Product page](#)

3 Images

Overview

Quantity:	50 µg
Target:	FAM50A
Binding Specificity:	AA 1-89
Reactivity:	Human, Rat
Host:	Mouse
Clonality:	Monoclonal
Application:	Western Blotting (WB), ELISA, Immunohistochemistry (Paraffin-embedded Sections) (IHC (p)), Immunohistochemistry (IHC)

Product Details

Brand:	IHC-plus™
Immunogen:	FAM50A (NP_004690, 1 a.a. ~ 89 a.a) partial recombinant protein with GST tag. MW of the GST tag alone is 26 KDa. Type of Immunogen: Recombinant protein
Clone:	5F10
Isotype:	IgG2a kappa
Purification:	Purified from ascites by Protein A

Target Details

Target:	FAM50A
---------	--------

Target Details

Alternative Name: [FAM50A \(FAM50A Products\)](#)

Background: Name/Gene ID: FAM50A

Synonyms: FAM50A, 9F, DXS9928E, HXC26, HXC-26, Protein HXC-26, XAP5, Protein FAM50A, Protein XAP-5

Gene ID: 9130

NCBI Accession: [NP_004690](#)

UniProt: [Q14320](#)

Application Details

Application Notes: Approved: ELISA, IHC, IHC-P (5 µg/mL), WB

Usage: Western Blot (Cell lysate) - positive control PC-12. Western Blot (Cell lysate) - positive control HeLa NE. Sandwich ELISA (Recombinant protein).

Comment: Target Species of Antibody: Human

Restrictions: For Research Use only

Handling

Format: Liquid

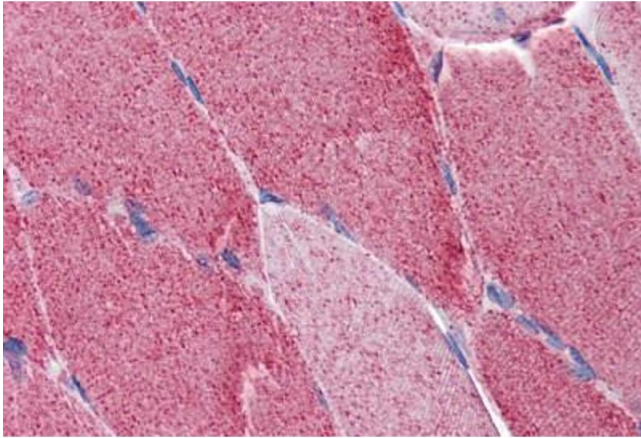
Concentration: Lot specific

Buffer: PBS, pH 7.4

Handling Advice: Aliquot to Avoid freeze/thaw cycles.

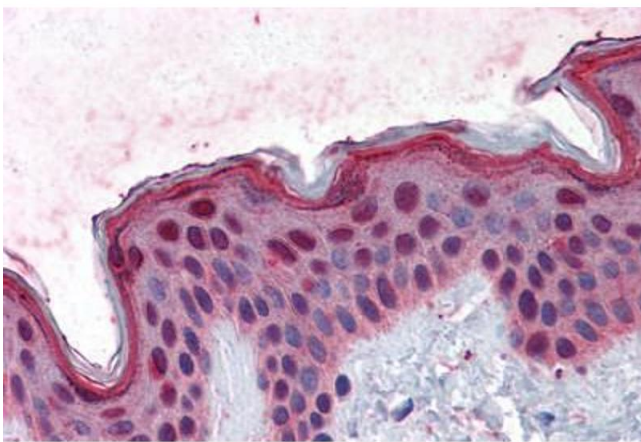
Storage: -20 °C

Storage Comment: Store at -20°C. Aliquot to avoid freeze/thaw cycles.



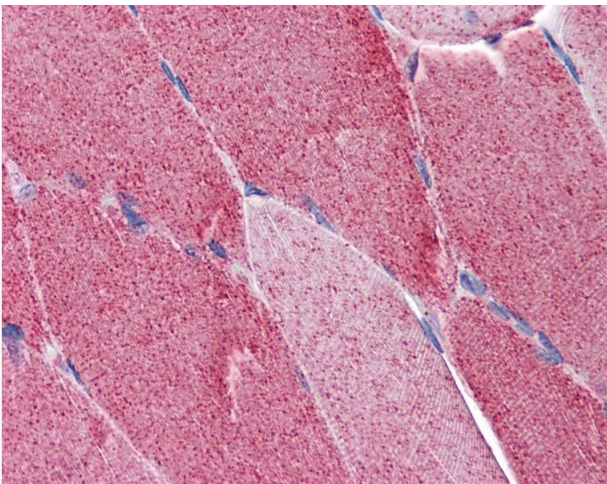
Immunohistochemistry (Formalin-fixed Paraffin-embedded Sections)

Image 1. Human Skeletal Muscle: Formalin-Fixed, Paraffin-Embedded (FFPE)



Immunohistochemistry (Formalin-fixed Paraffin-embedded Sections)

Image 2. Human Skin: Formalin-Fixed, Paraffin-Embedded (FFPE)



Immunohistochemistry

Image 3. Anti-FAM50A antibody IHC of human skeletal muscle. Immunohistochemistry of formalin-fixed, paraffin-embedded tissue after heat-induced antigen retrieval. Antibody concentration 5 ug/ml.