



[Go to Product page](#)

Datasheet for ABIN574410  
**anti-SH3BP5 antibody (AA 4-113)**

3 Images

Overview

Quantity:	50 µg
Target:	SH3BP5
Binding Specificity:	AA 4-113
Reactivity:	Human
Host:	Mouse
Clonality:	Monoclonal
Application:	Western Blotting (WB), ELISA, Immunohistochemistry (IHC), Immunofluorescence (IF), Immunohistochemistry (Paraffin-embedded Sections) (IHC (p))

Product Details

Brand:	IHC-plus™
Immunogen:	SH3BP5 (NP_004835, 4 a.a. ~ 113 a.a) partial recombinant protein with GST tag. MW of the GST tag alone is 26 KDa.  Type of Immunogen: Recombinant protein
Clone:	2B3
Isotype:	IgG1 kappa
Purification:	Purified from ascites by Protein A

Target Details

Target:	SH3BP5
---------	--------

## Target Details

---

Alternative Name: SH3BP5 / SAB ([SH3BP5 Products](#))

---

Background: Name/Gene ID: SH3BP5

Synonyms: SH3BP5, SH3 domain-binding protein 5, SH3BP-5, SAB

---

Gene ID: 9467

---

NCBI Accession: [NP\\_004835](#)

---

UniProt: [O60239](#)

---

## Application Details

---

Application Notes: Approved: ELISA, IF (10 µg/mL), IHC, IHC-P (5 µg/mL), WB

Usage: Western Blot (Cell lysate) - positive control A-431. Immunohistochemistry (Formalin/PFA-fixed paraffin-embedded sections, 1 µg/mL) - positive control human colon adenocarcinoma. Immunofluorescence (10 µg/mL) - positive control HeLa cells. Sandwich ELISA (Recombinant protein).

---

Comment: Target Species of Antibody: Human

---

Restrictions: For Research Use only

---

## Handling

---

Format: Liquid

---

Concentration: Lot specific

---

Buffer: PBS, pH 7.4.

---

Handling Advice: Aliquot to Avoid freeze/thaw cycles.

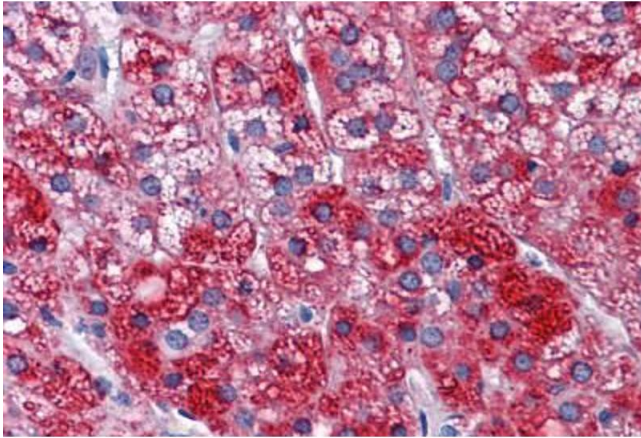
---

Storage: -20 °C

---

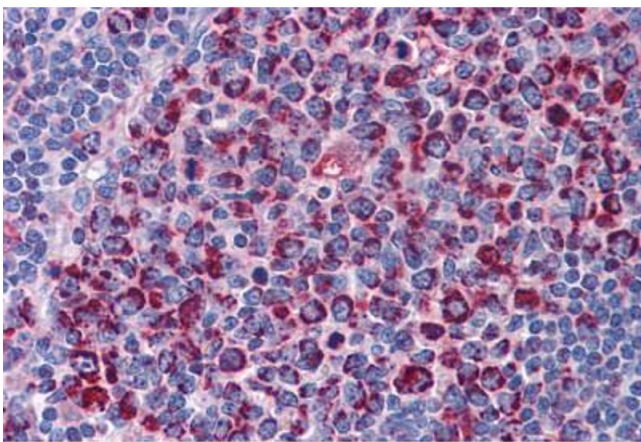
Storage Comment: Store at -20°C. Aliquot to avoid freeze/thaw cycles.

---



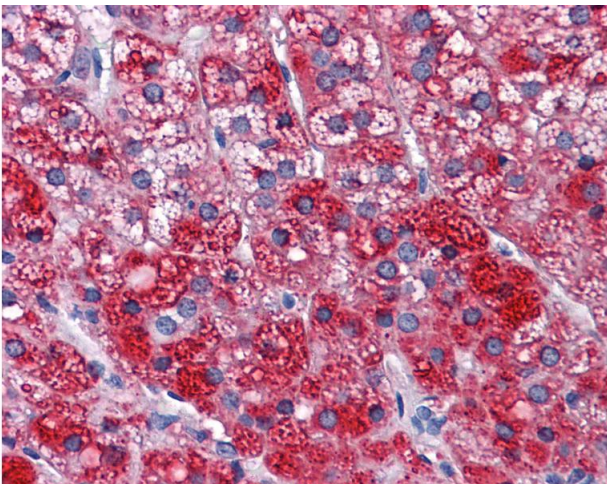
### Immunohistochemistry (Formalin-fixed Paraffin-embedded Sections)

**Image 1.** Human Adrenal: Formalin-Fixed, Paraffin-Embedded (FFPE)



### Immunohistochemistry (Formalin-fixed Paraffin-embedded Sections)

**Image 2.** Human Tonsil: Formalin-Fixed, Paraffin-Embedded (FFPE)



### Immunohistochemistry

**Image 3.** Anti-SH3BP5 antibody IHC of human adrenal. Immunohistochemistry of formalin-fixed, paraffin-embedded tissue after heat-induced antigen retrieval. Antibody concentration 5 ug/ml.