



[Go to Product page](#)

Datasheet for ABIN574419

anti-YAP1 antibody (AA 53-162)

4 Images

Overview

Quantity:	50 µg
Target:	YAP1
Binding Specificity:	AA 53-162
Reactivity:	Human
Host:	Mouse
Clonality:	Monoclonal
Application:	Western Blotting (WB), ELISA, Immunohistochemistry (IHC), Immunofluorescence (IF), Immunohistochemistry (Paraffin-embedded Sections) (IHC (p))

Product Details

Brand:	IHC-plus™
Immunogen:	YAP1 (NP_006097, 53 a.a. ~ 162 a.a) partial recombinant protein with GST tag. MW of the GST tag alone is 26 KDa. Type of Immunogen: Recombinant protein
Clone:	2F12
Isotype:	IgG2a kappa
Purification:	Purified from ascites by Protein A

Target Details

Target:	YAP1
---------	------

Target Details

Alternative Name: [YAP / YAP1 \(YAP1 Products\)](#)

Background: Name/Gene ID: YAP1

Synonyms: YAP1, 65 kDa Yes-associated protein, YAP, Yes-associated protein beta, Yes-associated protein delta, Yorkie homolog, YAP2, Yes-associated protein 1, Yes-associated protein 2, YKI, YAP65

Gene ID: 10413

NCBI Accession: [NP_006097](#)

UniProt: [P46937](#)

Pathways: [MAPK Signaling](#), [Stem Cell Maintenance](#), [Regulation of Lipid Metabolism by PPARalpha](#)

Application Details

Application Notes: Approved: ELISA, IF (10 µg/mL), IHC, IHC-P (5 µg/mL), WB (1 - 5 µg/mL)

Usage: Western Blot (Cell lysate) - positive control HeLa NE. Western Blot (Transfected lysate) - positive control transfected 293T cell line. Immunofluorescence (30 µg/mL) - positive control HeLa cells. Sandwich ELISA (Recombinant protein).

Comment: Target Species of Antibody: Human

Restrictions: For Research Use only

Handling

Format: Liquid

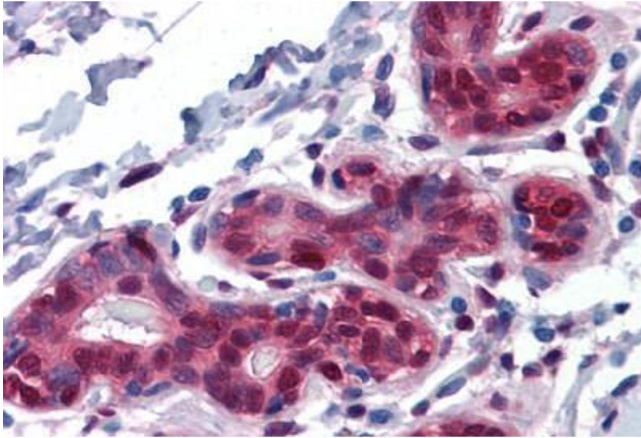
Concentration: Lot specific

Buffer: PBS, pH 7.4.

Handling Advice: Aliquot to Avoid freeze/thaw cycles.

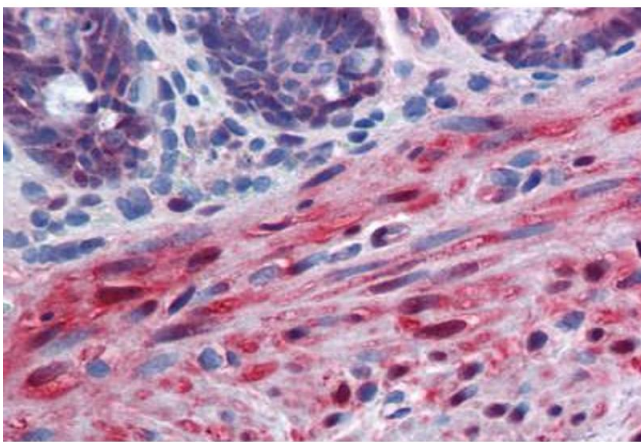
Storage: -20 °C

Storage Comment: Store at -20°C. Aliquot to avoid freeze/thaw cycles.



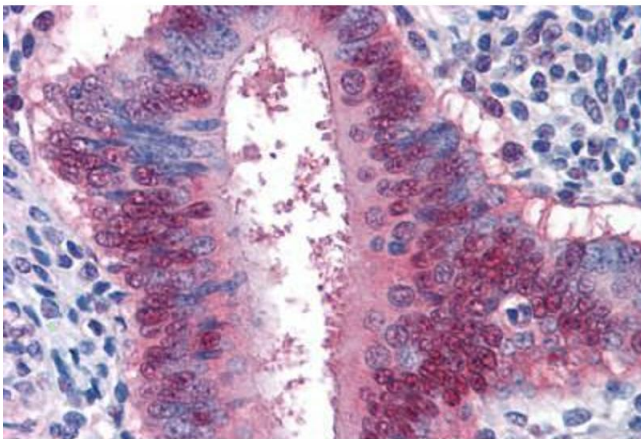
Immunohistochemistry (Formalin-fixed Paraffin-embedded Sections)

Image 1. Human Breast: Formalin-Fixed, Paraffin-Embedded (FFPE)



Immunohistochemistry (Formalin-fixed Paraffin-embedded Sections)

Image 2. Human Colon, muscularis mucosa: Formalin-Fixed, Paraffin-Embedded (FFPE)



Immunohistochemistry (Formalin-fixed Paraffin-embedded Sections)

Image 3. Human Uterus: Formalin-Fixed, Paraffin-Embedded (FFPE)

Please check the [product details page](#) for more images. Overall 4 images are available for ABIN574419.