

Datasheet for ABIN574428

anti-LST1 antibody**3** Images[Go to Product page](#)

Overview

Quantity:	0.05 mg
Target:	LST1
Reactivity:	Human
Host:	Mouse
Clonality:	Monoclonal
Conjugate:	This LST1 antibody is un-conjugated
Application:	Western Blotting (WB), Immunoprecipitation (IP), Immunocytochemistry (ICC), Immunohistochemistry (Paraffin-embedded Sections) (IHC (p)), Immunohistochemistry (IHC)

Product Details

Brand:	IHC-plus™
Immunogen:	KLH-fused peptide corresponding to amino acids SSEGPDLRGRDKRGT of human LST1. Percent identity by BLAST analysis: Human (100%), Gibbon, Monkey (93%).
Clone:	LST1-02
Isotype:	IgG1
Specificity:	The antibody LST1/02 reacts with an extracellular epitope of LST1, an approximately 6-11 kD protein expressed as various transmembrane or soluble forms. LST1 is found predominantly on monocytes and dendritic cells. It migrates on SDS PAGE gels as approximately 25-28 kD molecule.
Predicted Reactivity:	Percent identity by BLAST analysis: Human (100%) Gibbon, Monkey (93%).
Purification:	Protein A purified

Target Details

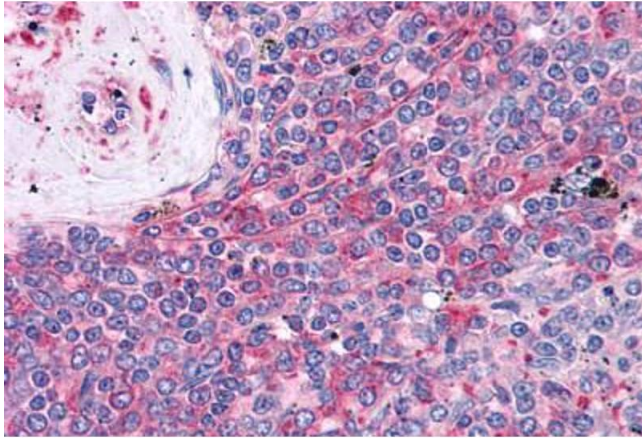
Target:	LST1
Alternative Name:	LST1 / LST-1 (LST1 Products)
Background:	Name/Gene ID: LST1 Synonyms: LST1, B144, D6S49E, Lymphocyte antigen 117, LST-1, Protein B144
Gene ID:	7940
UniProt:	O00453

Application Details

Application Notes:	Approved: ICC, IHC, IHC-P (10 µg/mL), IP, WB Usage: Immunohistochemistry: This antibody was validated for use in immunohistochemistry on a panel of 21 formalin-fixed, paraffin-embedded (FFPE) human tissues after heat induced antigen retrieval in pH 6.0 citrate buffer. After incubation with the primary antibody,
Comment:	Target Species of Antibody: Human
Restrictions:	For Research Use only

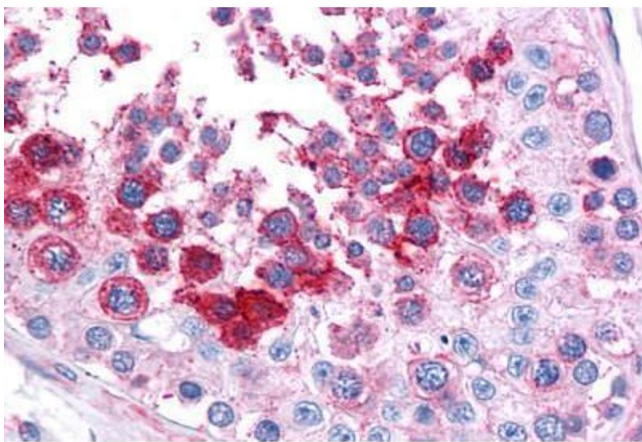
Handling

Format:	Liquid
Concentration:	Lot specific
Buffer:	PBS, 15 mM sodium azide, pH 7.4. Sourced in Ascites.
Preservative:	Sodium azide
Precaution of Use:	This product contains Sodium azide: a POISONOUS AND HAZARDOUS SUBSTANCE which should be handled by trained staff only.
Handling Advice:	avoid freeze thaw cycles.
Storage:	4 °C,-20 °C
Storage Comment:	Short term 4°C, long term aliquot and store at -20°C, avoid freeze-thaw cycles.



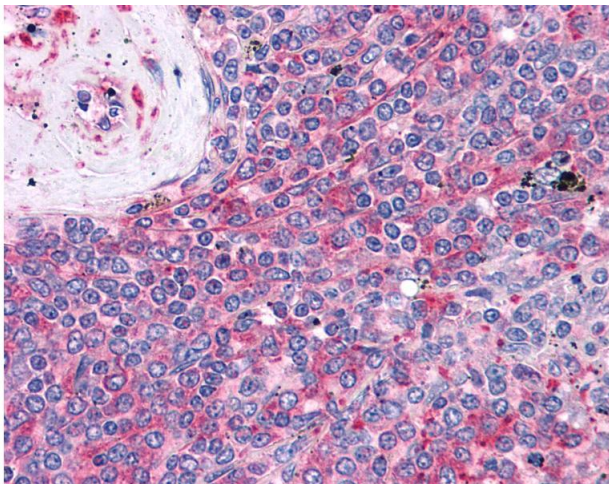
Immunohistochemistry (Formalin-fixed Paraffin-embedded Sections)

Image 1. Human Spleen: Formalin-Fixed, Paraffin-Embedded (FFPE)



Immunohistochemistry (Formalin-fixed Paraffin-embedded Sections)

Image 2. Human Testis: Formalin-Fixed, Paraffin-Embedded (FFPE)



Immunohistochemistry

Image 3. Anti-LST1 antibody IHC of human spleen. Immunohistochemistry of formalin-fixed, paraffin-embedded tissue after heat-induced antigen retrieval. Antibody concentration 10 ug/ml.