

Datasheet for ABIN574430
anti-HSP90AB1 antibody (N-Term)



[Go to Product page](#)

3 Images

Overview

Quantity:	0.05 mg
Target:	HSP90AB1
Binding Specificity:	N-Term
Reactivity:	Human, Mouse, Rat, Monkey, Cow, Dog, Rabbit, Pig, Goat, Horse, Xenopus laevis
Host:	Mouse
Clonality:	Monoclonal
Conjugate:	This HSP90AB1 antibody is un-conjugated
Application:	Western Blotting (WB), Immunohistochemistry (IHC), Immunoprecipitation (IP), Immunohistochemistry (Paraffin-embedded Sections) (IHC (p)), Immunocytochemistry (ICC)

Product Details

Brand:	IHC-plus™
Immunogen:	Peptide corresponding to the EEVHHGEEEEVEC sequence within N-terminal part of human Hsp90. Percent identity by BLAST analysis: Human, Gorilla, Orangutan, Monkey, Marmoset, Mouse, Rat, Goat, Panda, Zebu, Dog, Bovine, Horse, Rabbit, Pig, Platypus, Xenopus (100%), Elephant, Turkey (91%), Hamster, Chicken, Rice, Nematode, Toxoplasma (82%).
Clone:	MBH90B
Isotype:	IgG1
Specificity:	The antibody MBH90B recognizes the EEVHHG epitope within the N-terminal part of Hsp90 beta an ubiquitously expressed protein with calculated Mw of 83.3 kD, however, migrating as a 90 kD band under reducing SDS-PAGE conditions.

Product Details

Predicted Reactivity: Percent identity by BLAST analysis: Human, Gorilla, Orangutan, Monkey, Marmoset, Mouse, Rat, Goat, Panda, Zebu, Dog, Bovine, Horse, Rabbit, Pig, Platypus, Xenopus (100%) Elephant, Turkey (91%) Hamster, Chicken, Rice, Nematode, Toxoplasma (82%).

Purification: Protein A purified

Target Details

Target: HSP90AB1

Alternative Name: HSP90AB1 / HSP90 ([HSP90AB1 Products](#))

UniProt: [P08238](#)

Pathways: [Regulation of Cell Size](#)

Application Details

Application Notes: Approved: ICC (1 µg/mL), IHC, IHC-P (5 µg/mL), IP, WB

Usage: Immunohistochemistry: This antibody was validated for use in immunohistochemistry on a panel of 21 formalin-fixed, paraffin-embedded (FFPE) human tissues after heat induced antigen retrieval in pH 6.0 citrate buffer. After incubation with the primary antibody,

Comment: Target Species of Antibody: Human

Restrictions: For Research Use only

Handling

Format: Liquid

Concentration: Lot specific

Buffer: 15 mM sodium azide, 0.2 % BSA, PBS

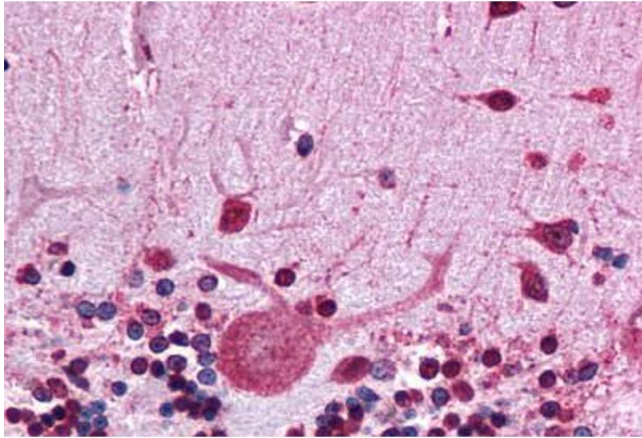
Preservative: Sodium azide

Precaution of Use: This product contains Sodium azide: a POISONOUS AND HAZARDOUS SUBSTANCE which should be handled by trained staff only.

Handling Advice: avoid freeze thaw cycles.

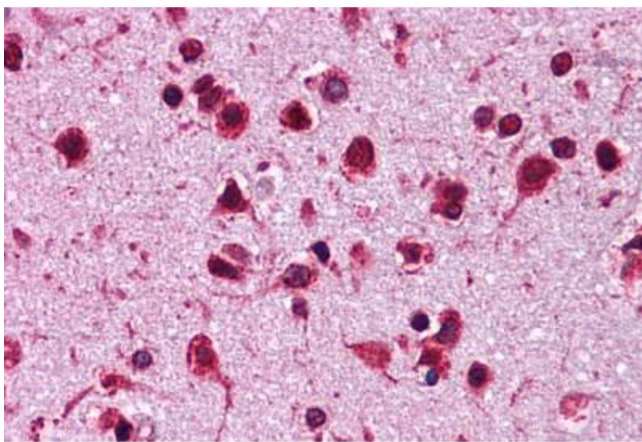
Storage: 4 °C, -20 °C

Storage Comment: Short term 4°C, long term aliquot and store at -20°C, avoid freeze-thaw cycles.



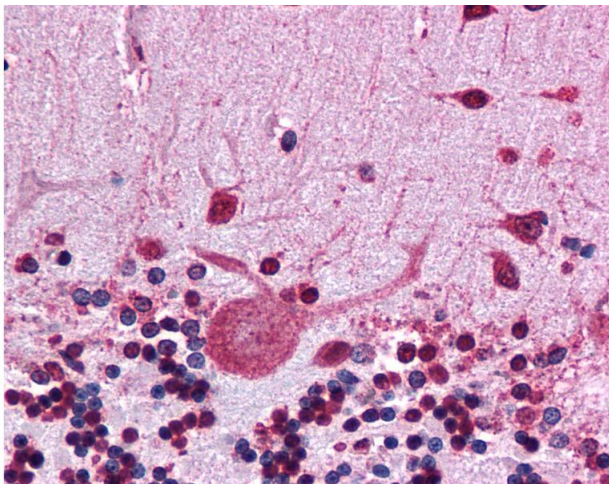
Immunohistochemistry (Formalin-fixed Paraffin-embedded Sections)

Image 1. Human Brain, Cerebellum: Formalin-Fixed, Paraffin-Embedded (FFPE)



Immunohistochemistry (Formalin-fixed Paraffin-embedded Sections)

Image 2. Human Brain, Cortex: Formalin-Fixed, Paraffin-Embedded (FFPE)



Immunohistochemistry

Image 3. Anti-HSP90AB1 antibody IHC of human brain, cerebellum. Immunohistochemistry of formalin-fixed, paraffin-embedded tissue after heat-induced antigen retrieval. Antibody concentration 5 ug/ml.