



[Go to Product page](#)

Datasheet for ABIN574451

## anti-ATP6V1D antibody (AA 69-169)

### 3 Images

#### Overview

Quantity:	50 µg
Target:	ATP6V1D
Binding Specificity:	AA 69-169
Reactivity:	Human
Host:	Mouse
Clonality:	Monoclonal
Conjugate:	This ATP6V1D antibody is un-conjugated
Application:	Western Blotting (WB), ELISA, Immunohistochemistry (IHC), Immunohistochemistry (Paraffin-embedded Sections) (IHC (p))

#### Product Details

Brand:	IHC-plus™
Immunogen:	ATP6V1D (NP_057078, 69 a.a. ~ 169 a.a) partial recombinant protein with GST tag. MW of the GST tag alone is 26 KDa.  Type of Immunogen: Recombinant protein
Clone:	3G4
Isotype:	IgG2a kappa
Purification:	Purified from ascites by Protein A

## Target Details

---

Target:	ATP6V1D
Alternative Name:	ATP6V1D / V-ATPase subunit D ( <a href="#">ATP6V1D Products</a> )
Background:	Name/Gene ID: ATP6V1D Subfamily: ATPase - V type Family: Transporter  Synonyms: ATP6V1D, ATP6M, V-ATPase subunit D, VPATPD, V-type proton ATPase subunit D, Vacuolar H-ATPase subunit D, Vacuolar proton pump D subunit, Vacuolar proton pump subunit D, VMA8, V-ATPase d subunit, Vacuolar ATPase subunit D, VATD
Gene ID:	51382
NCBI Accession:	<a href="#">NP_057078</a>
UniProt:	<a href="#">Q9Y5K8</a>
Pathways:	<a href="#">Transition Metal Ion Homeostasis</a> , <a href="#">Proton Transport</a>

## Application Details

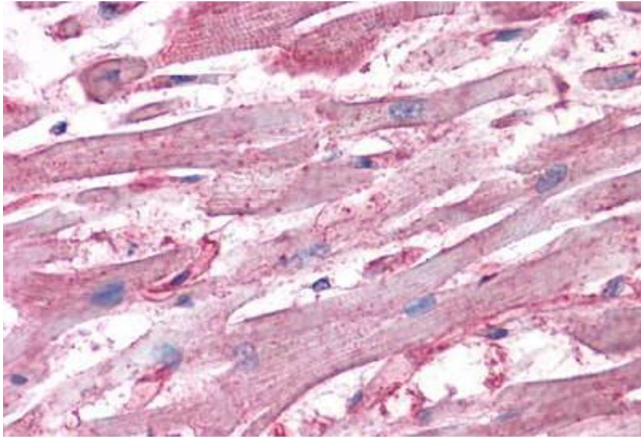
---

Application Notes:	Approved: ELISA, IHC, IHC-P (2.5 µg/mL), WB  Usage: Tested in Western blot using the recombinant protein immunogen as the protein source.
Comment:	Target Species of Antibody: Human
Restrictions:	For Research Use only

## Handling

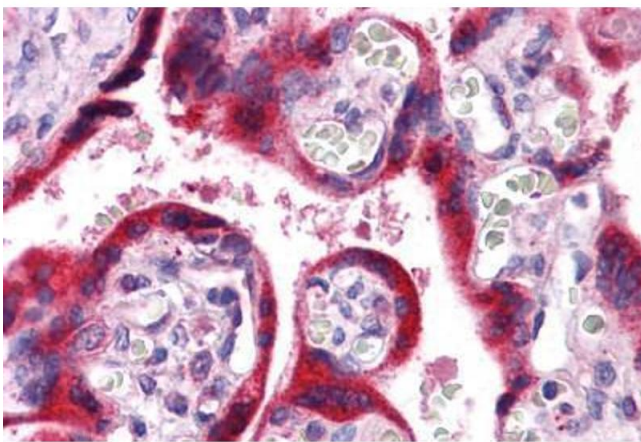
---

Format:	Liquid
Concentration:	Lot specific
Buffer:	PBS, pH 7.4. Sourced in Ascites.
Handling Advice:	Aliquot to Avoid freeze/thaw cycles.
Storage:	-20 °C
Storage Comment:	Store at -20°C. Aliquot to avoid freeze/thaw cycles.



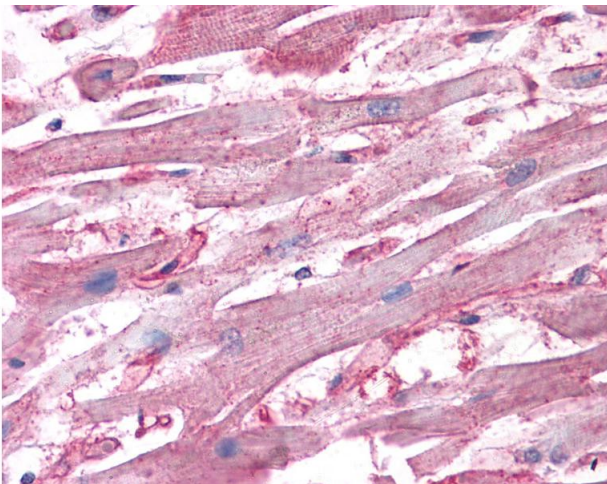
**Immunohistochemistry (Formalin-fixed Paraffin-embedded Sections)**

**Image 1.** Human Heart: Formalin-Fixed, Paraffin-Embedded (FFPE)



**Immunohistochemistry (Formalin-fixed Paraffin-embedded Sections)**

**Image 2.** Human Placenta: Formalin-Fixed, Paraffin-Embedded (FFPE)



**Immunohistochemistry**

**Image 3.** Anti-ATP6V1D antibody IHC of human heart. Immunohistochemistry of formalin-fixed, paraffin-embedded tissue after heat-induced antigen retrieval. Antibody concentration 2.5 ug/ml.