

Datasheet for ABIN574458
anti-CORO1B antibody (AA 1-490)



[Go to Product page](#)

4 Images

Overview

Quantity:	50 µg
Target:	CORO1B
Binding Specificity:	AA 1-490
Reactivity:	Human
Host:	Mouse
Clonality:	Monoclonal
Conjugate:	This CORO1B antibody is un-conjugated
Application:	Western Blotting (WB), ELISA, Immunohistochemistry (IHC), Immunohistochemistry (Paraffin-embedded Sections) (IHC (p))

Product Details

Brand:	IHC-plus™
Immunogen:	CORO1B (AAH06449, 1 a.a. ~ 490 a.a) full length recombinant protein with GST tag. MW of the GST tag alone is 26 KDa. Type of Immunogen: Recombinant protein
Clone:	1E7
Isotype:	IgG1 kappa
Purification:	Purified from ascites by Protein A

Target Details

Target: COR01B

Alternative Name: COR01B ([COR01B Products](#))

Background: Name/Gene ID: COR01B

Synonyms: COR01B, Coronin-1B, CORONIN-2

Gene ID: 57175

UniProt: [Q9BR76](#)

Application Details

Application Notes: Approved: ELISA, IHC, IHC-P (5 µg/mL), WB

Usage: Western Blot (Cell lysate) - positive control HeLa NE. Sandwich ELISA (Recombinant protein).

Comment: Target Species of Antibody: Human

Restrictions: For Research Use only

Handling

Format: Liquid

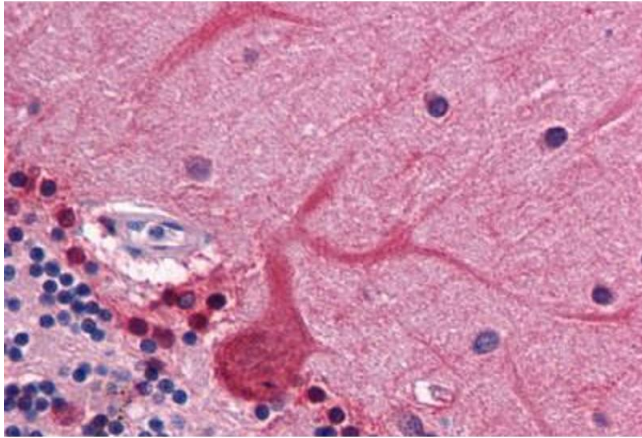
Concentration: Lot specific

Buffer: PBS, pH 7.4

Handling Advice: Aliquot to Avoid freeze/thaw cycles.

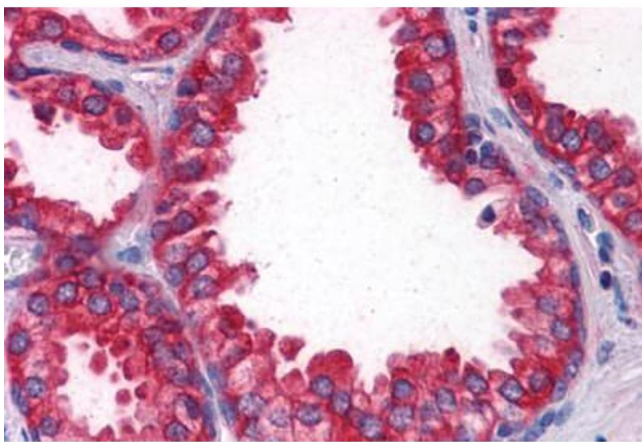
Storage: -20 °C

Storage Comment: Store at -20°C. Aliquot to avoid freeze/thaw cycles.



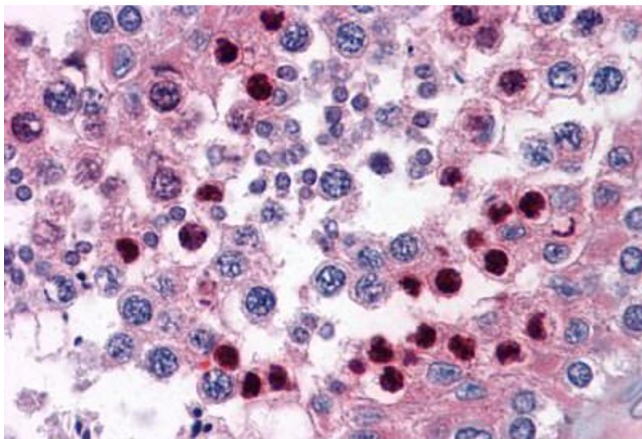
Immunohistochemistry (Formalin-fixed Paraffin-embedded Sections)

Image 1. Human Brain, Cerebellum: Formalin-Fixed, Paraffin-Embedded (FFPE)



Immunohistochemistry (Formalin-fixed Paraffin-embedded Sections)

Image 2. Human Prostate: Formalin-Fixed, Paraffin-Embedded (FFPE)



Immunohistochemistry (Formalin-fixed Paraffin-embedded Sections)

Image 3. Human Testis: Formalin-Fixed, Paraffin-Embedded (FFPE)

Please check the [product details page](#) for more images. Overall 4 images are available for ABIN574458.