

Datasheet for ABIN574461
anti-THOC6 antibody (AA 71-181)



[Go to Product page](#)

3 Images

Overview

Quantity:	50 µg
Target:	THOC6
Binding Specificity:	AA 71-181
Reactivity:	Human, Rat
Host:	Mouse
Clonality:	Monoclonal
Conjugate:	This THOC6 antibody is un-conjugated
Application:	Western Blotting (WB), ELISA, Immunohistochemistry (IHC), Immunohistochemistry (Paraffin-embedded Sections) (IHC (p))

Product Details

Brand:	IHC-plus™
Immunogen:	WDR58 (NP_077315, 71 a.a. ~ 181 a.a) partial recombinant protein with GST tag. MW of the GST tag alone is 26 KDa. Type of Immunogen: Recombinant protein
Clone:	1F6
Isotype:	IgG1 kappa
Purification:	Purified from ascites by Protein A

Target Details

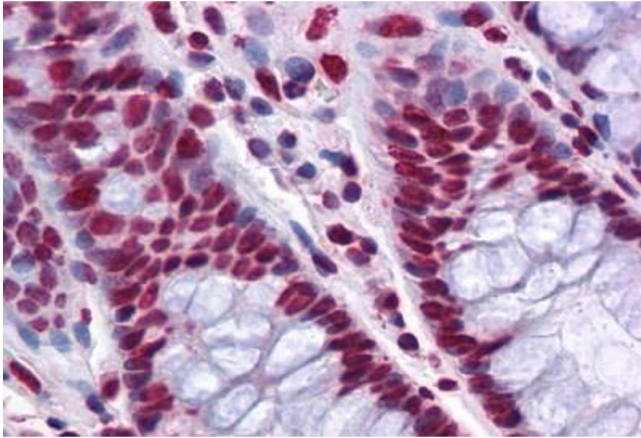
Target:	THOC6
Alternative Name:	THOC6 (THOC6 Products)
Background:	Name/Gene ID: THOC6 Synonyms: THOC6, FSAP35, WDR58, WD repeat domain 58, THO complex subunit 6 homolog
Gene ID:	79228
NCBI Accession:	NP_077315
UniProt:	Q86W42

Application Details

Application Notes:	Approved: ELISA, IHC, IHC-P (5 µg/mL), WB Usage: Western Blot (Cell lysate) - positive control PC-12. Western Blot (Cell lysate) - positive control A-431. Sandwich ELISA (Recombinant protein).
Comment:	Target Species of Antibody: Human
Restrictions:	For Research Use only

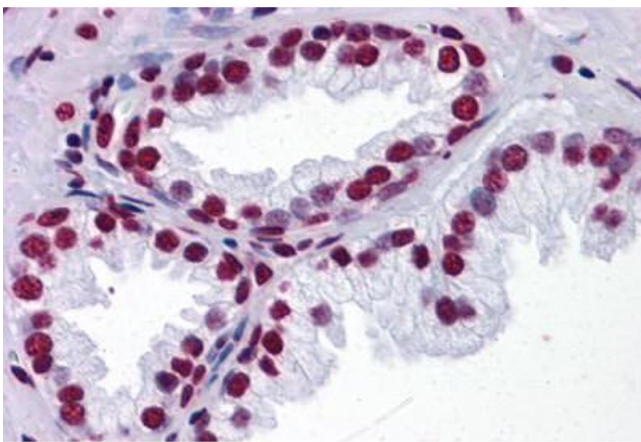
Handling

Format:	Liquid
Concentration:	Lot specific
Buffer:	PBS, pH 7.4. Sourced in Ascites.
Handling Advice:	Aliquot to Avoid freeze/thaw cycles.
Storage:	-20 °C
Storage Comment:	Store at -20°C. Aliquot to avoid freeze/thaw cycles.



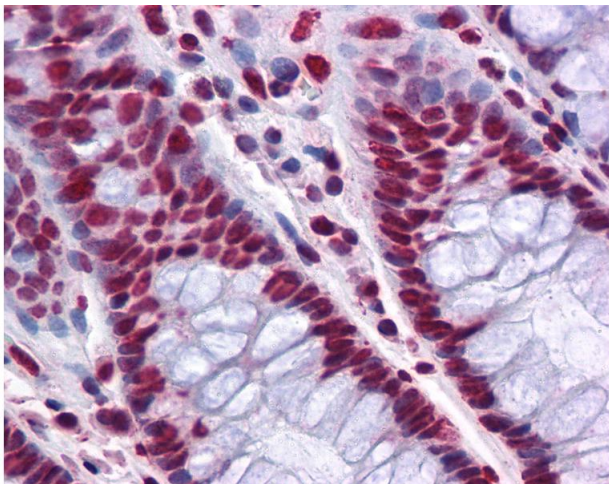
Immunohistochemistry (Formalin-fixed Paraffin-embedded Sections)

Image 1. Human Colon: Formalin-Fixed, Paraffin-Embedded (FFPE)



Immunohistochemistry (Formalin-fixed Paraffin-embedded Sections)

Image 2. Human Prostate: Formalin-Fixed, Paraffin-Embedded (FFPE)



Immunohistochemistry

Image 3. Anti-THOC6 / WDR58 antibody IHC of human colon. Immunohistochemistry of formalin-fixed, paraffin-embedded tissue after heat-induced antigen retrieval. Antibody concentration 5 ug/ml.