



[Go to Product page](#)

Datasheet for ABIN574463

anti-CAB39L antibody (AA 1-367)

2 Images

Overview

Quantity:	50 µg
Target:	CAB39L
Binding Specificity:	AA 1-367
Reactivity:	Human
Host:	Mouse
Clonality:	Monoclonal
Conjugate:	This CAB39L antibody is un-conjugated
Application:	Western Blotting (WB), ELISA, Immunohistochemistry (IHC), Immunohistochemistry (Paraffin-embedded Sections) (IHC (p))

Product Details

Brand:	IHC-plus™
Immunogen:	CAB39L (AAH10993, 1 a.a. ~ 367 a.a) full length recombinant protein with GST tag. MW of the GST tag alone is 26 KDa. Type of Immunogen: Recombinant protein
Clone:	3B11-1A4
Isotype:	IgG1 kappa
Purification:	Purified from ascites by Protein A

Target Details

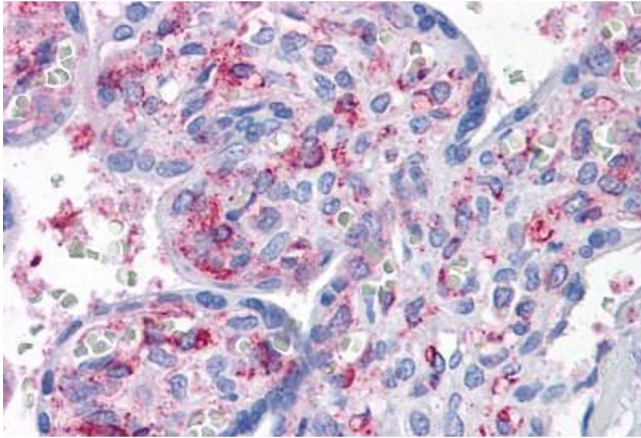
Target:	CAB39L
Alternative Name:	CAB39L (CAB39L Products)
Background:	Name/Gene ID: CAB39L Synonyms: CAB39L, Antigen MLAA-34, BA103J18.3, MO25-BETA, Mo25-like protein, MO2L, RP11-103J18.3, Sarcoma antigen NY-SAR-79, MO25beta, U937-associated antigen
Gene ID:	81617
UniProt:	Q9H9S4

Application Details

Application Notes:	Approved: ELISA, IHC, IHC-P (10 µg/mL), WB Usage: Western Blot (Cell lysate) - positive control K-562.
Comment:	Target Species of Antibody: Human
Restrictions:	For Research Use only

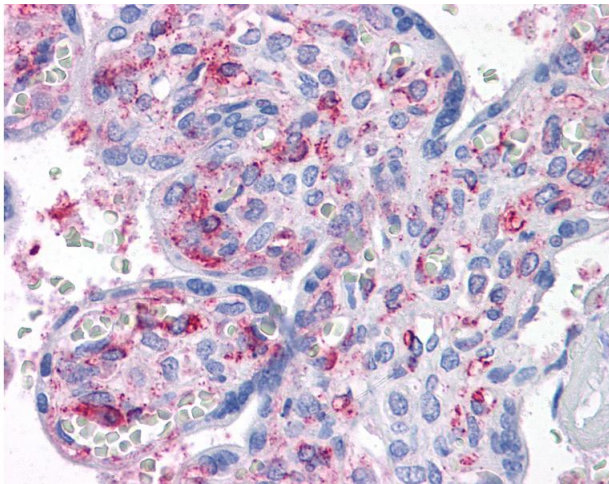
Handling

Format:	Liquid
Concentration:	Lot specific
Buffer:	PBS, pH 7.4
Handling Advice:	Aliquot to Avoid freeze/thaw cycles.
Storage:	-20 °C
Storage Comment:	Store at -20°C. Aliquot to avoid freeze/thaw cycles.



Immunohistochemistry (Formalin-fixed Paraffin-embedded Sections)

Image 1. Human Placenta: Formalin-Fixed, Paraffin-Embedded (FFPE)



Immunohistochemistry

Image 2. Anti-CAB39L antibody IHC of human placenta. Immunohistochemistry of formalin-fixed, paraffin-embedded tissue after heat-induced antigen retrieval. Antibody concentration 10 ug/ml.